



Loch Sport Link

February - March 2012



Gold Coin Donation

LOCH SPORT N.Y.E. FIREWORKS & FORESHORE CARNIVAL

"We came and it was the best new years; my partner and I had ever experienced.

It was much more special and beautiful than Lakes entrance or any other place I've been.

I hope you do the same next year!!!"

An extensive operation order (plan of what we are going to do) was prepared and authorised by Inspector Mc Ginn.

At the Police Station we had temporary cells delivered for use during the night if required.

As well as the four Loch Sport Police members here for holiday policing an extra four police were on duty in Loch Sport, responding to any calls. We also had extra police at Seaspray with Highway Patrols also visiting the township at peak times.

On the night all went very well. I estimated the crowd for 9.30pm Fireworks was greater than those at midnight and all patrons, mostly family groups were well behaved. Police checked a number of young persons for carrying alcohol, most in closed containers, going to celebrate elsewhere after the fireworks.

The midnight fireworks also went well with good attendance and no issues during or after the fireworks, closing the carnival rides after the fireworks was definitely of benefit, ensuring persons do not linger in that area.

No arrests were made during the night, one female was taken home after been found quite intoxicated and lying, passed out, with her legs on the road. She received a Penalty Notice.

We received a number of calls during the night for fireworks from private residences but generally most were completed by 1.30am. There were no issues with the Marina Hotel.

Congratulations to the committee in the preparatory work that led to a successful event, it was obvious the measures and coordination made the policing of this public event trouble free.

*Ray de Reus
Sergeant 20892
Loch Sport Police Station*

I would personally like to thank the Loch Sport Community House Committee of Management Volunteers for their commitment to this event as they gave up their time to marshal the event. Special thanks to Beth for allowing us to use her house as "office central".

I would also like to take this opportunity to thank the residents behind the carnival site for their patience and understanding; a true display of community spirit.

*Geoff Vennells
President*

Loch Sport Community House Inc.

The Loch Sport Community would like to thank the following businesses - without your ongoing sponsorship the New Years Eve Fireworks would not occur.

- ◆ **Wellington Shire;**
- ◆ **Gary Powers Real Estate;**
- ◆ **Loch Sport Lodge;**
- ◆ **Loch Sport Holiday Park;**
- ◆ **Loch Sport Marina Hotel;**
- ◆ **Russell Thomas Plumbing;**
- ◆ **D.H.C. Electrics;**
- ◆ **Loch Sport Sanctuary Café & Mini Golf;**
- ◆ **Loch Sport Garden & Building Supplies;**
- ◆ **F.O.B. Real Estate;**
- ◆ **Loch Sport Marina;**
- ◆ **Frankie's Service Station;**
- ◆ **Loch Sport Holiday Rentals;**
- ◆ **Loch Sport Bakery;**
- ◆ **Loch Sport Building Supplies;**
- ◆ **Loch Sport Fish n Chips;**
- ◆ **Lizards Pit Pizzas;**

Please remember to shop local and support these business.



Enterprise Cruise

On Monday 26th March the L.S.C.H. will once again set sail on the Enterprise for an enjoyable day.

We will be cruising along Bunger Arm to Steamer Landing taking in the wonderful variety of bird life. Don't forget your camera!

Cost - \$28.00
non members \$30.00
including lunch

Please contact the office
on 5146 0145
as few seats remain.

CONTENTS	Pg #
Community Information	
Community House News	
Nature Watch	
Advertisers	
Community Groups	
Wellington Shire	
Our Community	
Calendar of Events	
Horoscopes	
Tide Charts	

The LINK is a Loch Sport Community House Inc. publication aimed at providing news, information and entertainment to its readers.

Physical Address: Public Hall
National Park Road
Loch Sport

Mailing Address: P.O. Box 587
Loch Sport
Victoria 3851

Phone: (03) 5146 0145

Fax: (03) 5146 0195

Email: lsch@netspace.net.au

Web: www.lochsport.org.au

THE LINK IS AVAILABLE FROM:-

- The Lodge
- Mini Golf Sanctuary Café
- Loch Sport Bakery
- Loch Sport General Store
- Loch Sport Fire Shed (op shop)
- Loch Sport Fish & Chips
- Loch Sport Holiday Park
- Gary Powers Real Estate
- FOB Real Estate
- Loch Sport Marina Hotel
- Online -www.lochsport.org.au
- Tourist Information Centre - Sale
- Golden Beach Foodarama

LINK CONTRIBUTIONS:-

Deadline for articles & advertising for April May 2012 issue is **March 16, 2012** and can be lodged by the following means:-

Text: - email
word 97 doc*
(not word 2007)

- memory stick/disk

Photo/artwork:

- physical prints of artwork
- memory stick/disk

in one of the following computer graphic formats: BMP, GIF, JPG*
Please limit file size to under 1 meg

Please no handwritten or typed articles

DISCLAIMER

“Views expressed by the contributors are theirs alone. They are not endorsed by the Loch Sport Community House Inc. or the editors. No responsibility is accepted by the “LINK”, its editors or printers for the accuracy of information contained in text and advertisements.

Neither the editors, nor the Loch Sport Community House Inc. nor its committee in any way endorses or takes any responsibility whatsoever for any material contributed.

All contributions must be accompanied by the full name, address and telephone number of the contributor for verification purposes, not publication.”

COASTAL BUS SERVICE

	Mon/Fri	Wed
Departs		
Sale GCS	08:40	<=
Loch Sport (Wallaby St)	09:30	9:30
National Park Gate	09:35	09:35
General Store	09:45	09:45
Golden Beach	10:10	10:10
Longford	10:30	10:30
Sale Centre	10:40	10:40
Sale - Hospital	10:45	10:45

	Mon/Fri	Wed
Return		
Sale - Hospital (from)	4:15	1:20
Sale Railway	4:20	
Sale Centre	4:30	1:30
Longford	4:40	1:40
Golden Beach	5:00	
Loch Sport Turn-off	5:10	2:10
General Store	5:25	2:25
National Park	5:35	3:35
Swan & Wallaby	5:40	3:45

Paradise Beach Passengers
MUST BOOK Little's Coaches
51 44 2623 by 4 pm previous workday



MOBILE LIBRARY

Lake Street Car park
Tuesday & Thursday
10:30am - 1:00pm
2:00pm - 4:30pm

Books, talking books, DVD's, videos & music CD's
View the range of items for your entertainment, hobbies & crafts.

Research and membership is free for the family

ALL WELCOME

TIP TIMES

Mon ~ 12 pm - 4 pm
Fri, Sat, Sun ~ 12 pm - 5 pm



LOCH SPORT PUBLIC HALL

National Park Rd
For Hall bookings please phone
5146 0145



Loch Sport Community Health Centre
Nurse available - Mon to Fri

Administration Hours

Mon - Thurs 8:30am - 12:30pm
for nurse or doctor appointments & payment of accounts
We will be closed for the Public Holidays
The doctor is available for appointments all day Tuesdays but not available
14th Dec 2011 - 23rd Jan 2012

5146 0349

EMERGENCY NUMBERS

Ambulance	000
Report Fire	000
Police	000
L.S. Police	5146 0556
L.S. Health Centre	5146 0349
RACV	5146 0511
Red Cross	5146 0637
SES Loch Sport	5146 0263
L.S. Wildlife Rescue	5146 0940
SES Emergency	132500
Sale Police	5143 5000
Sale Hospital	5143 8600
Sale Shire Council	1300366244
Poisons Info	13 11 26

CHURCH SERVICES

Loch Sport Assembly of God

10:00am Every Sunday
Meeting in Public Hall.

Catholic Mass

10:00am Catholic Church
Mass 1st Tuesday
at Community Church

St Marks's Anglican & Community Church

10:30am Services 2nd & 4th
Sunday

ALL WELCOME



Loch Sport LINK
is available online

at

www.lochsport.org.au



New Group:

Are you interested in being part of a new group to meet and discuss ways to improve the aesthetics and environment in our town. Potential to be involved in landscape improvement, tree planting, identifying at risk species, both plant and animal, working with existing organizations to identify issues and to learn about our local area.

Model Boat Building



We have access to a talented local model boat builder who is keen to teach others. Novices or experienced model builders are most welcome to join. Come along and meet others who share the same interest.

Muckaround Band

Bring your voices and instruments and join in our community "noise". There are many local residents who would like to meet other like minded people to sing, play and/or learn a musical instrument. A karaoke machine has been offered to get this musical happening off the ground. Loosen your vocal chords, get your guitars and drums out of the cupboards and sheds and bring them along. Fridays 2:00 3:00pm

Dancing to Music

Come along and get those bones moving. Join us and have fun while you work up a gentle sweat. This is open to all fitness levels. Fridays 9:30 - 10:30am.

Line Dancing

This will hopefully begin during first term. Line Dancing is a wonderful way to exercise. Please ph office on 51460145 to express your interest.

Twilight Movies

Our outdoor cinema did not go ahead due to the inclement weather (either too windy or rain belting down). We will attempt to try and show Red Dog at our outdoor cinema at the Marina Hotel over the Easter holiday period. Stay tuned.

All new or existing activities and groups can only commence /continue with your participation; sufficient numbers are necessary to make them happen. A couple of our activities/groups are in need of new participants to continue. Please phone the office on 5146 0145 if you are interested.

International Women's Day Luncheon

Thursday 8th March
11:30am - 2:00pm
Loch Sport Public Hall
BYO food to share & drinks.



Men's Shed

The plans for our Loch Sport Men's Shed are now drawn up. We are now waiting on a building surveyors report. Our grant application is currently being finalised to ensure we are ready when the state funding grants are announced. Please check out your back shed; we will be eternally grateful for any donations.

Public Hall Garden



A couple of our hard working Community House Volunteers are currently revamping the gardens which surround our public hall. All donations of plant cuttings or established plants will be gratefully accepted.

Why we live in Loch Sport

This photo was taken last weekend by a group of local paddlers while out on Lake Victoria. Please send us your photos or articles on why you chose Loch Sport as your home.



Loch Sport Community House
Annual membership fees are now due
Please pay on commencement of classes
\$2.00

LSCH Inc. Programs
After School /Holiday Program
Ancestry Group
Art Group
Book Club
Calligraphy
Chronic Pain - Self Management Group
Computer Class
Community Kitchen
Craft Group
Dance Club
Exercise Group
History Group
Mobile Phone
Model Boat Building
Movie Group
Making Music Group
Quilting Group
Swimming Group
Tai Chi
Walking for Fitness

Loch Sport Community House Inc. Opening Hours
Monday, Tuesday & Friday
9:30am - 3:00pm
Fees and charges
Classes carry a \$3.00 activity charge
All House users are required to pay a \$2.00 annual membership fee.
Services available
Photocopying
A4 sheet - black 20c
 - colour 30c
A3 sheet - black 60c
 - colour \$1.00
Internet \$2.00 per hour
Emails \$1.00 send/receive
Fax \$1.00
Resumes/CV's \$5.00



Loch Sport Public Hall will be hosting the Combined Wellington Public Hall Committee of Management Meeting on Tuesday 28th February



L.S. COMMUNITY HOUSE DANCE GROUP

We hope all the dancers out there had a very Merry Christmas, and have a safe, happy, 2012.

The Wednesday night weekly dancing starts up again on 1st February, all welcome.

Don't know how to dance? We have easy lessons from 6.30pm followed by social dancing at 8.00pm. Chris is our teacher, and all age groups are welcome. Cost is \$4.00PP; children with an adult are free.

Come along and join us for fun and fitness.

2012 Monthly Dance Program: Friday 3rd February 8.00pm – Eddy
Sunday 4th March 1.30pm – Harmony Plus

Saturday 7th April 8.00pm – Harmony Plus (Easter)

Saturday 5th May 8.00pm – Eddy

Saturday 2nd June 8.00 pm – CDs

Friday 29th June 8.00pm – Russel & Adam.

Enquiries 51460422, 51460938.



Handen
SOCIAL BUSINESS

Your Business Depot – Loch Sport

- Bookkeeping – Manual & MYOB
- Document Specialists
- Typing / Desk Top Publishing
- Emails – in and out
- Documentation Preparations
- Binding
- Photocopying
- Laminating
- Direct Marketing
- Label Prints
- Business Cards / Stationery
- Promotional Products, etc

For further information call 0421 834 850
Email: denise@handen-se.com
www.handen-se.com

post office gallery

loch sport

DOG WALKING

If you would like your pooch to get out and about but are unable to do this, please contact me. I require **no payment**; all I need is the exercise! For any time of the day, any day of the week, I can take your dog down to the beach or for a stroll along the lake for anywhere up to an hour! If you require pet or house minding, this can be arranged as well. Just call!

Trudy 51460204 or 0466 630 834

Welcome back to the beginning of another school year! We trust everyone has had a well-earned break and made a happy and healthy start to 2012.

We missed the last edition of the 2011 link newsletter but would like to farewell and thank the following people for their time and commitment to Loch Sport Primary School: Bianca Stuckey, Hongyan Huo, Alex Griffiths, Margie Harvey, and Haslett and Alexander families. We wish everyone all the best and look forward to hearing from you soon! Bianca will continue to work in the Sale Rural Cluster so we have a good chance to catch up with her on junior sport days and Margie Harvey will be our number 1 Casual Relief Teacher.

I welcome the following team of staff for 2012: Catherine Sandeman will be our senior classroom teacher. She is in her second year of teaching and was previously at Seaspray Primary School. I will be taking the junior classroom 3 days/ week and will be in the office 2 days/ week to attend to Principal administration. Clare Bailey will be our part time specialist teacher and she is also a beginning teacher. Linda Brown and Joulie Chamah will be our part time integration support people. Mary Jones is our Business Manager and she attends to Office Administration on Thursday and Friday.

We also have a few new families to the school and I would like to welcome them into the community and the school.

The term dates for students in 2012 are listed in the table. Staff dates vary due to curriculum days.

Loch Sport Primary School is looking at ways we can include the community into our school and timetable. We are looking for people to volunteer their time to come into the school to share

an interest or talent they have with staff and students, such as knitting, sewing, wood work, sports, gardening, etc. If you would like to share what you do with the school, please contact Tracey Morand on 51460 457 or 0432 345 750.

We would like to include activities into our lunch times and during the school day. The number of visits and amount of time you are able to give is up to you. Please support our students and help them to link with the community and develop interests in areas that may not otherwise be considered.

Loch Sport Primary School thoroughly enjoyed meeting and working with different community groups in 2011 and we hope to extend this and begin to work with more people from the Loch Sport community in 2012.

We are also seeking volunteers to complete a survey to determine whether we have support to fund a school chaplain. The survey can be completed at the school or at the desk at the Post Office. Please record your name and whether you support the idea of a school chaplain as a yes, no or undecided. You may leave a brief comment if you wish.

We look forward to meeting up with you all in the 2012 school year. We thank you for the support you have shown the school in the past and we look forward this continue into the future.

*Tracey Morand
Principal*

Loch Sport Primary School

Term 1	Thursday 2 nd Feb- Friday 30 th March
Term 2	Monday 16 th April- Friday 29 th June
Term 3	Tuesday 17 th July- Friday 21 st September
Term 4	Monday 8 th October- Friday 21 st December.

The bread argument: to feed or not to feed .

This conversation continually comes up with ordinary people who live around wildlife.

Some of the common thoughts and considerations from persons who feed bread to wildlife are :-

"I am the only one feeding them and what does a little bit hurt?"

"They look at me with big pleading eyes and wait on my fence, in yard, outside my door etc to get the bread. They must be hungry."

"I want to bond with them and this does the trick."

"I really enjoy the close contact with the wildlife and enjoy them running over, hopping or flying over to me."

"I am doing them a favour by feeding them. Helping out mum with babies. They are sooo cute."

"It is all bunk and I am not hurting and never would hurt this lovely critter. I have always done it this way and know that I am right."

Do you recognise any of these thoughts? Give yourself a break, I believe that we all have these thoughts; it is part of who we are as humans. We need to relate to our surrounding living creatures and want to give and receive back; it makes us human.

I am not going to state *"do not feed the wildlife"* as many articles on wildlife do suggest, as I have lived with wildlife in Loch Sport and have observed human interaction with the local animals and birds that come into their gardens. I realise that many locals do love their wildlife and really *cherish* their connection with them.

BUT there are better ways to interact with our wildlife than feeding them bread. I will endeavour to show you the damage bread causes to the health to our wildlife and advise you on what to give the wildlife in place of bread that won't damage their health.

Point: Some wildlife goes from house to house getting their share of bread; yours may not be the only house they visit. It is a great concern to drive past houses and see large amounts of bread thrown out for our wildlife. This disposal of stale bread is insulting to their dignity.

Let's consider what is in the bread: wheat (main ingredient) and other products. It is the wheat which attracts the wildlife to the bread. Many of us are affected by many of these additives. Consider how our wildlife could be affected?

Kangaroos: In Loch Sport I have observed the debilitating disease called "Lumpy Jaw" in the kangaroos who have been feed regular amounts of bread. This disease kills. It is very distressing to witness the slow decline

of a healthy animal as it succumbs to this disease. The end result is either the euthanizing of the animal or the other result which is death by starvation and pain. (see picture).

Bread when mixed with saliva becomes mushy and compacts in the kangaroos teeth. It becomes a breeding ground for bacteria which leads to a gum infection. After time the animal loses weight, the infection develops into an abscess which becomes enlarged causing the throat opening to close off. The animal experiences incredible pain; think of a tooth ache! This infection travels into the jaw bone causing swelling and pain in the bone. The kangaroo becomes very thin and listless; with swelling on one side or both sides of their jaws. They drool, for no reason, and can become very 'pesty' as they look for humans to feed them as they can no longer eat properly. They lose interest in looking for their own foods. They are still insistent on being fed right up until they cannot swallow anymore.

Birds: By feeding birds and their young bread, you fill them up on food that does not provide the vitamins and nutrients needed to for them to develop into healthy birds. They can also become future scavengers; losing some of their natural behaviour to look for their normal foods. When grown they teach their young how to scavenge for food; unable to show their babies how to find their natural foods.

The tragedy is when we leave our homes for a lengthy holiday, sell our homes, or leave Loch Sport for new lives; we often do not consider that we are leaving our created dependent animals to find food from someone else.

These now dependent animals and birds are then defenceless and not able to exist in the wild with skills that they should have learnt from their mum or from having to remember to seek their own food.

Not everything a wild creature knows is by instinct. A lot of it is learned behaviour from others of their own kind or mum. When we intervene in this natural pattern we often create problems for the wildlife's survival.

Obviously I am not a lover of feeding bread to our wildlife; however, I do recognise that we have humanised many of our critters and we will still feed them no matter what anyone says. I suggest that you feed them very small quantities, TIT BITS ONLY, of food close to their natural diet. Seed for parrots and mince meat, mixed with Wombaroo insectivore mix for kookaburras, magpies, butcher birds and wattle birds.

You can get this product at pet shops. This provides the meat eating birds, additional natural ground insects, nutrients, vitamins and protein than just plain mince. Again it should only be a tit bit. A special treat, certainly not a whole diet. The birds still need to seek their own diet which is best for them.

I will go into more info on our interaction with wildlife in future articles.

Thanking you all, until next time
 Donna
 Loch Sport Wildlife Shelter

Abscess from over feeding with bread




**Want Amway?
 then Phone
 Dawn on 5146 0599**
Prompt, reliable service guaranteed



**LOCH SPORT
 HEALTH CENTRE
 COMMITTEE**
**Monday, 19th February 2012
 1:00 - 2:00pm**
 at the Loch Sport
 Community Health Centre
 Interested members of the Loch Sport
 community are invited to
 attend the Health Centre
 Committee meeting. The meeting
 is an opportunity for you to raise and dis-
 cuss any matters
 relating to the health service with
 Central Gippsland Health Service
 representatives.
 We look forward to your
 participation.
 For further information please
 contact the Centre on 5146 0349.
 or Ruth Churchill on 5143 8800.



SEA EAGLES - It Happened This Way



Dear Loch Sport nature lovers,
We have had a busy time over summer trying to finish our Sea-Eagle paper and in doing so; have seen many beautiful sights around the lakes from our boat.

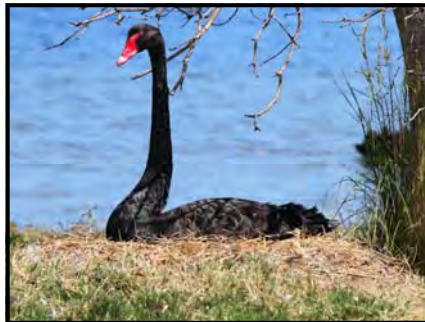
We watched literally thousands of black swan eggs hatch on their narrow island out past Aurora channel and then were privileged to capture on film hungry Sea Eagles picking off tiny, powerless swan chicks to provide for their own young. At the conclusion of the season, many eggs on the island were left discarded whole and unhatched, their thick shells too resilient to be pierced by any predators.

More than ever this summer and autumn we have been cognizant of the fact that the lakes are so healthy and brimming with all kinds of bird life, including emus wandering the Park. Everywhere we journeyed huge flocks of ducks, grebe and cormorants were present dispersing up into the air like black clouds, disturbed by our boat.

The key pair of eagles we are studying had two stunning juveniles and all pairs directly around Loch Sport raised at least one, which is a good sign of healthy water with abundant food supply.

At Trouser Point a little regiment of independent gangly, teenage pelis assemble on the spit of land most days and it is interesting to note that mud island – which is just before Boobiella, now has so much sand adjoining it, that it has formed a new isthmus which projects out into the pristine blue lake, enabling many water birds to claim it as home. The contour of Loch Sport has just been altered!

Blessings – Jenny and Ken Hodge
Get in contact with us at www.jennyhodge.com. Many of Ken's photos are on this website.



Picture 1/ A huge catch;
Picture 2/ Pelican, eagle encounter;
Picture 3/ Emus in National Park;
Picture 4/ Swan on her nest;
Picture 5/ Male on guard





Small & Beautiful

Moira found an unusual beetle in her garden and was interested in finding its name and something about it. Oh the wonders of Google! There it was on the Museum Victoria site identified as *Eupoecila australasiae* commonly called the Fiddler Beetle, because of the violin shaped markings on its back.

These beetles lay their eggs in rotting logs or damp soil under logs. The grubs that hatch feed on rotting timber and build cocoons of soil and debris. In early summer the adult beetles emerge and fly around eating nectar from eucalypts and other trees. And I didn't know that beetles, except for Lady Birds, were flyers!

Fiddlers range up the east coast of Australia and can have the base colour varying from dark brown to black and the markings ranging from pale yellow to dark green. The size also can vary greatly.

Did you know that one in every 3 known species on earth is a beetle!

Other beetles we see around in the summer are the Green scarab beetle (very sacred in ancient Egypt) and Golden Stag Beetle; both these with their iridescent colouring are all lit up for Christmas so are often called Christmas beetles.

Tiny moths

Perhaps because I had been looking at the beetle I became more aware of other small things around. There have been so many butterflies fluttering about in the garden this summer. Just this week I have had a visit en masse of extremely tiny beautiful moths. They seemed to be everywhere, even alighting on the clothes out drying on the line.

I have not had time to identify them but perhaps someone can help. They are as small as my little finger nail; a golden brown colour with an intricate patterning mainly around the edges of the curved wings. The unpatterned areas are translucent. They are definitely small things of exquisite beauty. The museum has a free identification service.

discoverycentre@museum.vic.gov.au

Exotic Wildlife

I have had a number of enquiries about the strange water creature seen in Lake Reeve.

It bears a strong resemblance to a water serpent with a long neck and hoops which would appear to be sections of a long back. Although I say water creature it can survive when the Lake is dry. Many have remarked on its similarity to a creature found in a body of water in Scotland. (See picture on right)

Regards Beth

While sitting on the edge of the dunes reading a book, I saw a seal swim to shore and climb up on to the sand. He lay there for an hour or so, rolling over, scratching himself, snoozing and making himself comfortable. He watched me at times but I didn't scare him off. He then went back into the water and did his acrobatic skills in the large clear waves. I watched as he moved down closer to the pole then I wandered down that way via the dunes. He came up on the beach quickly and went up close to the dunes and I could no longer see him. As I got closer, I kept looking down the steep sand cliff but couldn't find him until I nearly walked into him up in the dunes. I went bush in a big arc so as not to scare him and sat on a hump of sand to watch him roll around. About half an hour later he went under the bushes for a while then up onto one of the steep sand hills. He got part way up then turned back and headed straight towards where I was sitting. I didn't want to get bitten, so I quickly moved myself and scared the hell out of the poor old fellow. He quickly moved to the sand cliff and slid down it to the beach then back to the water for a bit of surfing. I followed the tracks he had left in the dunes and found where he climbed up the cliff when I couldn't see him. The first part of his climb up from the beach was on an angle but the last part was straight up. I don't know how he did it as I tried but kept slipping back down to the beach. I have seen a lot of seals over the years but never seen one do anything like this. It made my day!

Lesley



So far this fishing season has been affected by unusually cold, wet and windy weather making beach conditions often very unsuitable for fishing.

Casting far enough to reach deep water and strong sidewash have become real issues for fishers. This is the first season for some years that we have not had any weed in the water.

Catches are very much down compared to other years with only occasional good catches being taken. Reports received of some large salmon, a few flathead and small gummies and an occasional snapper are pretty much it!

I personally saw a 2.15 metre school shark landed prior to Christmas and a snapper I hooked spat the bait after a couple of big runs.

There is no shortage of crabs taking baits, plus cat sharks, port jackson sharks and rays for fishers to return to the water.

Helen



Eupoecila australasiae



Our very own unusual sea creature

Information is called for:-

When did it first appear to take up residence in our lake?

How did it get there?

How has it been able to remain motionless for so long?

Does it have a name, either scientific or otherwise?

Please help me with this so that I can enlighten others in our next edition.

Rainfall 2011

Jan	27.5	Jul	50.3
Feb	56.5	Aug	43.0
Mar	52.0	Sep	42.7
Apr	46.7	Oct	80.7
May	34.80	Nov	117.7
Jun	72.9	Dec	59.9

Yearly Total

Noeleen, Toorak Ave - 683.3ml
Joan, Lake Reeve - 638.



Pet Minders

We will provide pet minding services for your animals while you're away. \$10.00 per day will include feeding & a walk for dogs, half hour duration. Call Marg on Ph: 5146.0219

Loch Sport Concrete Services

Lot 4, Progress Road
(Industrial Estate)

Loch Sport

Concrete Mini Mix - Gravel Supplied

Bob Cat excavation hire

Block Clearing & Slashed

Driveway Formed & Layed

Excavation for House Sites

Auger Boring

Telephone Jason on

Mobile

0428 460 588



L. A. Marshall

Member MBA 9354

Renovations

Alterations

Extensions

Decks

Carports

ETC

Campbell Street

Loch Sport

0412 530 612

0431 378 533

CONCRETING

A.J. Guest
Concreting Pty Ltd

For quality concreting,
specializing in garage floors,

coloured concrete,

house slabs,

paving etc.

Phone Tony Guest

0418 328 526

RAY MANN QUALIFIED PAINTER & DECORATOR

Free quotes

Reasonable rates

Fully insured

35 years trade experience



Mobile: 0418101132

Email: raymann3@bigpond.com

A & B SEPTIC TANK CLEANING

SEVEN (7) DAYS A WEEK

24 HOUR SERVICE

Andrew & Bronwyn Miller

Freecall 1800 063 387

TELEPHONE (03) 5144 6524

MOBILE 0427 347 655

LAKESIDE DESIGN

& SIGNS

Mob: 0418 349 250

Fax : (03) 5146 0112

- Kitchens & Bathroom Cabinets
- All types of Signage
- Banners
- Vinyl Lettering

E-Mail : lakesidesigns@iprimus.com.au



DHC ELECTRICAL

Mick Luke

For all your Electrical Needs

Underground power a specialty

Reg. No. 7669

404 Sanctuary Road
Loch Sport

Phone 5146 0641
Mobile 0438 460 641

LOOKING FOR A PUMP??



GIPPSLAND PUMPS & IRRIGATION

112 York Street, Sale Vic 3850

PH: 03 5144 2000 FAX: 5144 7400

MOB: 0429 139 446

gippslandpumps@bigpond.com

SALES, SERVICE, REPAIRS &
INSTALLATIONS, VALVES
FITTINGS - POLY, BRASS, S/STEEL
PIPES - POLY, PVC



Jill & Alan Hall's MARINA HOTEL

Telephone: (03) 5146 0666
BAR - BISTRO - BOTTLESHOP
Bistro open 7 days

A great place to enjoy a cold drink, a meal, a coffee and a fantastic view.

The Marina Hotel Courtesy Bus,
 is available to pick you up, and get you home safely.

Home deliveries available evenings & weekends including both meals
 & beverages - minimum purchase \$20 plus \$4 delivery

Weekday Lunch time Specials are back! (see Gippsland Times)

Coming Attractions

Normie Rowe, Wendy Stapleton, or someone new; who do you want to see again?

LOCH SPORT GENERAL STORE

Licensed P.O.

with on-line EFTPOS

Hardware & Plumbing Supplies

LP & Auto Gas Supplies

Boat & Van Storage

Bait & Tackle

Telephone 5146 0300

**LOCH SPORT
GARDEN SUPPLIES AND
NURSERY**
66 - 68 SANCTUARY ROAD
5146 0513

For all your Gardening Needs
 Plants, Fertilizers,
 Plumbing & Timber Supplies,
 Mulches, Gravels, Concrete Mix
 and Screenings, Dry Firewood.

Open Daily
9:00am - 4:00pm

Closed Tuesday

MINI GOLF SANCTUARY CAFE
64 Sanctuary Road
5146 0422



Mini Golf, Video Hire, Take-a-way,
 Dine in - B.Y.O. Liquor License
 Milk, Bread, Groceries, Drinks etc

Opening Hours

Sun -Thursday 8:30 - 7.30pm
Frid-Sat-8:30am - 8:00pm
closed Tuesday

For all your Meat Requirements

GUTHRIDGE MEATS

Graham & Denise James,
Proprietors

Specialising in Bulk
 Packs, BBQ Packs
 Smallgoods made on
 the premises
 278 Dawson Street
 Sale, 3850



PHONE & FAX ORDERS
(03) 5144 3381

FREE HOME DELIVERY - SALE AREA

THE LODGE LICENSED SUPERMARKET

- ◆ Authorised Newsagency
- ◆ Licensed Loch Sport Dairy
- ◆ ANZ bank Agency & Eftpos
 - ◆ Fresh Produce & Deli
 - ◆ Grocery - Bait - Ice
- ◆ Fishing Rods & Equipment
- ◆ Licensed Bottle Shop
 - ◆ DVD Hire

We Welcome your business
Lake Street, Loch Sport

Phone 5146 0353

D & J HOME & HANDYMAN SERVICES

Mowing
Edging
Tree Pruning
Household Maintenance



Competitive Rates
 Phone Derick & Judy
 on
5146 0120



Graffiti Removal Systems P/L
Official Provider Melbourne 2006 Commonwealth Games
Keeping Australia Clean and Green

Greg Ireland

- * **Graffiti Removal and Coatings ***
- * **External Hard Surface Cleaning ***
- * **Building and Facilities Maintenance ***
- * **Industrial Maintenance Chemicals ***
- * **Spill Control ***

Ph: (03) 9336 0448
 Mobile: 0419 315 768
 Fax: (03) 9331 7462
 E-Mail: greg@graffitiremovals.com

P.O. Box 208
 Keilor East
 Victoria 3033

We provide: Total Asset Protection Solutions
in your fight against graffiti vandalism

www.graffitiremovals.com

ACTION TOSHIBA

OFFICE SHARP

MACHINES

Pty Ltd

**96 Raymond Street,
Sale, VIC, 3850**

Phone (03) 5144 1822

Member of

Gary Gargan
 Trading as SCENAR Victoria

.Dip Remedial Massage
 .Scenar Therapist
 .Relaxation and Hot Stone Massage

**16 Anthony Court
 Loch Sport
 Vic 3851**

scenarvictoria@dragnet.com.au

By Appointment Only 
0428 432 243

Dahlsens

BUILDERS
ONE STOP SHOP FOR

- ◆ Timber
- ◆ Hardware
- ◆ Pre-Fab Walls
- ◆ Roof Trusses
- ◆ Plumbing
- ◆ Expert Service

**48 MACARTHUR ST SALE
 PHONE 5144 2422**



Phone Laurie: 03 9776 7171 Mobile: 0425 703 985

Laurie The Tree King

Tree & Stump Removal

Tree Lopping

All Work Fully Insured

sayers repairs
 all mechanical work

kevin sayers
 mechanic

1 government road
 loch sport
 3851
 0419365423

kevin.sayers@hotmail.com
 51460133

 **Loch Sport Boat Storage**

Individual lockable steel sheds
 9m x 3m x 3.6m eaves
 Rates starting at \$880 p.a.

24 hour access

Lot 8 Progress Road
 Loch Sport

Phone Brooke
0422 419 454

PETE'S ODDS & ENDS

Do you need a handy man?
 No job too large or too small

- Tiling
- Painting
- Concreting
- Carpentry
- Paving
- Gardening



ALL WORK GUARANTEED

Peter Marshall
0434 574 701

SMITHYS BOBCAT & EXCAVATOR HIRE

- 5 Tonne Excavator (Rubber Tracks)
- 4 in 1 Bobcat
- Foundations
- 6M Tipper
- Landscapes Formed
- Driveways Cut
- Licensed Operator
- Sites Cleared
- Fully Insured

GEOFFREY SMITH
 TEL: 0419 361 268
 0412 453 077

50-52 Carroll Street, Loch Sport

- ◆ Pest Control
- ◆ Termite Treatments
- ◆ Pre-Purchase Inspections

“ One family, one goal great service”

1800815160



Aspired Living
Make it your home

House and Land
Packages in Loch Sport

Starting at **\$179,990**
Design your own home on
your block of land.
Contact: Brook on
0422 419 454

Gary Fouet Roof Plumber
4 Alameda Drive Sale 3850
Lic No 46908



**SALE
ROOFING
REPAIRS**

➤ All roofing repairs in tiled and metal roofs ➤ Spalling & Downpipes
➤ Gable work ➤ Leaks quickly fixed & repaired ➤ Chimney Flashing
➤ Reliable experienced tradesmen you can depend on
➤ All Work Guaranteed

**Tel 0488 ROOFIX
0488 766349**

**STEEL
GARAGES** 
by **FABRICATIONS PTY LTD**

Phone Brian **0418 360 540**

After hours (03) 5978 7055

For A free Quote



**AVON
WATERTANK
CLEANERS**

Improve the quality of your water

- Clean Domestic Water Tanks
- Guttering
- Desludging Swimming Pools & Fish Ponds

**Retain up to 5000 Gallons
of your water**

For Bookings & Enquiries Contact
Troy Schleifer - Mobile: 0428 451 969
1 Gooch Road, Stratford Vic. 3862
Phone: (03) 5145 6208

**Chemical Free Vacuum
& Pressure Cleaning Service**

**LOCH SPORT
CARPET CLEANING**
servicing Loch Sport for 10 years

Carpets Cleaned Dirt Cheap
Reasonable Rates ...

New Service - Tuesdays
or by arrangement

Drop your Carpet Squares or Mats off
at
Depot before 10am
and pick up at 12 noon

For Prompt & Courteous Service

Phone 5146 0999
Mobile: 0437 365 417

**Loch Sport
Holiday Rentals**

Loch Sport Holiday Rentals
is the leading holiday
rental provider in the Loch Sport area

The sole role of
Loch Sport Holiday Rentals
is to provide holiday rental
properties in the Loch Sport area
which allows us to provide
the best service possible

Contact: Leanne Hartwig
E-Mail: lshr@netspace.net.au
Phone: 03 5146 0914
Fax: 03 5146 0914
Mobile: 0423 378962

**Peter Medlings
Complete
Boating Services**

For all your marine and
Paint work, Timber work,
Canvas covers, Electrical,
Outboard and Diesel repairs,
Boat detailing, Antifouling,
Boat Sales and Trailer hire.

**Please call Peter on
0407 233 020**

TANKFORMERS




Now Available in Loch Sport
at
Loch Sport Garden Supplies

Sizes: 1000 ltr to 2800 ltr

Phone 5146 0513

<http://www.tankformers.com.au>
email: sales@tankformers.com.au



**H.V.B. Building
& Construction**
P/L

Extensions, Renovations,
New Homes, Transportable Buildings

Hans Visser

P.O. Box 562, Loch Sport, Vic, 3851
Tel: (03) 5146 0452
Mobile: 0427 350 118

Telling a Life Story



There is a saying that a photo tells a thousand words. This is especially so when photos are used at funeral services as part of the process of celebrating a life.

Why is this the case? Often the people attending the funeral have only known the deceased over recent years and may not appreciate the earlier parts of their life and the things that they were involved with and their achievements.

In particular, it is always moving to see the reactions of grandchildren or other young relatives in seeing that their grandparent was just as young and vibrant as they themselves are.

The stories told in the eulogy, when combined with the photos shown on the screens, are a powerful way of telling the life story to the gathered family and friends.

At Gippsland Funeral Services we recognised quickly the power of telling a life story through photos. We were one of the first funeral directors to install dual 50" plasma screens in the chapel and purchase projectors and screens for other venues to facilitate these presentations.

On top of this, we use a special program that does a lot more than just display the photo; our software is able to start with a group photo and pan and zoom to bring into focus the

person whose life is being celebrated. This is particularly useful with group photos, such as old school photos or sporting photos, where it can be quite difficult for those attending to work out which one the person is in the group.

Once the funeral is over, the Life Story Presentation DVD is returned to the family in a beautiful personalised cover. Multiple copies for other family members and friends are quickly and easily produced.

It is another way in which Gippsland Funeral Services facilitates the celebration of a life.

Scott Rossetti

Third Generation Funeral Director

Creating inspirational funerals

www.gippslandfuneralservices.com.au



**GIPPSLAND
FUNERAL
SERVICES**



AUSTRALIAN
FUNERAL
DIRECTORS
ASSOCIATION



FOB REAL ESTATE LOCH SPORT



NEW HOUSE & LAND PACKAGES
By Aspired Living



Completed homes ready to move into including plans, permits, colour bond roof, aluminium windows, double glazed windows, solar hot water, kitchen with oven & hotplate, fully painted, ready to move into.

2 bedrooms from \$165,000 both house & land

3 bedrooms from \$180,000 both house & land

LAND FOR SALE from \$45,000

ESTABLISHED HOMES with a large selection of 2 bedroom beach cottages to luxury waterfront homes.

See all our properties on www.foblochsport.com

03 51 460 933

54 LAKE STREET LOCH SPORT

Russell Thomas Plumbing & Air Conditioning

Licensed Number 21433

INTRODUCING THE TEAM:-

Our team consists of experienced and skilled tradies, who go out of their way to please the client, no matter what the task involves - from home dripping taps to major refits- No job is too big or too small to receive our full attention.

Russell Thomas

Completed his apprenticeship with Millers Plumbing (Morwell) in 1974;
Began his own business, Russell Thomas Plumbing & Gasfitting, in 1980
employing an apprentice and 2 tradesmen at the tender age of 22;
Worked as Area Sales Manager for Tradelink Plumbing Supplies for 2 years;
Managed Indoor Sports Stadiums for 10 years
1 year at both Banyule City Council & Ayres Rock Resort (Yulara),
4 years at Melton Indoor Recreation Centre then 4 years at O.A. Ruff Sports Stadium Sale
Built a holiday home at Loch Sport approximately 25 years ago
Moved to Loch Sport and started Plumbing & Air-conditioning business

Life's highlights:-

Married Grace, Children – Angelo, Melissa, Kara & Tabby the cat
Enjoys spending time with his family
Enjoys – fishing, boating, Essendon football club, most sports & travel when possible

Richard Harvey

Moved to Loch Sport December 1977 to work permanently in retail at the
Loch Sport Building Supplies (Moonies);
His position dealt with building & plumbing hardware sales, pump repairs & replacement;
Branched out to open R & M.Y. Harvey Pumps when the business sold in 2000;
Began working part-time for Russell in 2006;
Commenced his plumbing apprenticeship in 2008;
Brings to the business a willingness to learn, a positive attitude and a strong work ethic;

Life's Highlights:-

Married the bosses daughter, Marg (a local primary school teacher), in 1979;
Raising their 2 sons, Joel & Chris;
Enjoys fishing, 4 wheel driving, camping, the Collingwood football team

Mark Szabatara, Pat Brady

Tradesman Sub Contractor

Matt Hose 0448 445 503, **Craig Rainey** 0417 588 838

Commercial Gas Fitting

(Commercial cooking appliances should be inspected every 6 – 12 months)

What we stand for:-

Quality workmanship
Environmentally friendly solutions
Customer satisfaction
Friendly advice

PH: 0407 505 567

After Hours Tel: (03) 5146 0629

Fax: (03) 5146 0587

Email: russellt@vic.australis.com.au



After a busy Christmas we would like to advise people to be more diligent in their sporting activities and be mindful of others, also take care on the water.

Please make sure your house numbers are clearly displayed so we can find you in an emergency if we are called to your residence.

We are in the process of getting keep clear written in front of our ambulance shed, but in the meantime would like to ask please don't park in front of the ambulance shed as we

need to get the ambulance out for emergency calls.

We always want new recruits so if you think you have what it takes give as a call on 0407323155 and we will arrange for a package to be sent to you.

Please call the ambulance 000 at any time if you are in need of medical assistance and have a happy and safe 2012.

*Loch sport Ambulance
Lyn Sayers*



Saver Plus



Since 2010 thousands of people across Australia have benefited from Saver Plus, the country's largest matched savings program. The program has re-opened recruitment in Wellington and Berry Street is looking for new participants.

"Now that we're recruiting again, Saver Plus will continue to make a positive difference by building participants' money management skills," said Colin Robson from Berry Street.

"Participants in Wellington have saved over \$11,000 and have used their matched savings to help pay for laptops, school uniforms and sports fees," he said.

Saver Plus assists people on lower incomes to strengthen their financial skills and develop a savings habit. The program has reached over 11,000 Australians to date, matching their personal savings dollar for dollar, up to \$500, to help pay for educational costs for themselves or their children.

The Honourable Julie Collins MP, Parliamentary Secretary for Community Services recently launched the 2011 Saver Plus summary report. The new research shows that 87 per cent of past Saver Plus participants continue to save at the same rate or more two years after completing the program and report greater life satisfaction with an ability to control their finances and reduce debt levels.

ANZ Branch Manager Sale Guy Bateson, said his branch staff are looking forward to assisting more local participants to save. "The 2011 Saver Plus research confirms the positive outcomes of this program," he said. "ANZ is proud to continue working closely with Berry Street to make the program available in our local community."

Saver Plus was developed by ANZ and the Brotherhood of St Laurence in 2002. The program is funded by ANZ and the Australian Government Department of Families, Housing, Community Services and Indigenous Affairs, with ANZ providing matched savings for participants.

To be eligible to join Saver Plus participants need to:

- ◆ be at least 18 years old;
- ◆ hold a Health Care or Pensioner Concession card;
- ◆ have some form of regular income from work; and
- ◆ be a parent or guardian of a child at school, or attend vocational education themselves.

People interested in applying for Saver Plus can contact 1300 610 355 or saverplus@bsl.org.au



LOCH SPORT FIRE BRIGADE

FIRE STATION - 51460 997

OPP SHOP ENQUIRES - 51460 967

Hi Everybody, hope you all had a merry Christmas and a very happy new year.

Since the last link was issued the brigade has had the official opening of the station with the Chief Officer of the CFA Mr. Ewan Ferguson attending on the day.

It was well received by all who attended and the word was most of the guests were impressed with the outcome of our building project.

On the 16th Dec Mr. Peter Ryan Deputy Premier of Victoria officially open the NSP (Neighborhood Safer Place) at the Lions Park on Lake St.

The idea of this area is that in the case of a large-scale fire emergency and your own fire plan has gone astray through whatever reason, you and your family have still got a place to retreat to, but remember the safest option might be leave the night before or first thing in the morning.

More information visit the CFA website www.cfa.vic.gov.au

Loch Sport Fire Station Opp Shop is open Sunday Mornings.

There are now 2 **Fire Rating Danger Signs** located in Loch Sport:

- Main Rd located outside the Loch Sport Police Station &
- National Park Rd Corner of Goodlet Ave, "Frankie's Servo "

These signs are changed daily as required by members of the Loch

Sport Fire Brigade.

Operational the brigade has been quite busy since Christmas Night with - 3 Turnouts in relation to BBQs; - 1 Turnout to a burn off (Council bylaw no burning off in the town); - 1 Turnout to assist our colleagues at Golden Beach but we were turned back half way there. The time for this incident was 12.10am New Years Day; - 1 Turnout to a house fire in Wallaby St Loch Sport on Christmas Night at 6.15 pm. The house was totally destroyed in this incident but was made harder with the house located up the side of a hill. At the height of the firefight the area was inundated with a severe lighting storm and heavy rain.

So on this note I would like to thank all the crews from the following brigades and the different agencies involved with this incident:- GOLDEN BEACH BRIGADE, SEASPRAY BRIGADE, LONGFORD BRIGADE, LOCH SPORT BRIGADE, DISTRICT TEN OPERATIONS, STRABROKE GROUP, AMBULANCE VICTORIA, VICTORIA POLICE & SP AUST NET for support and help and dedication on a most challenging incident that we have not seen around here in a long time.

*Capt Pete Connell
Loch Sport Fire Brigade*



LOCH SPORT C.R.G.

Wellington Council to visit Loch Sport - LOCH SPORT CRG Report Council will hold their bi annual Loch Sport meeting on Tuesday 13th March 7pm at public hall. All welcome.

Thank you to everyone who submitted their ideas for the Community Plan before January 1st and put forward others on January 6th. Voting was well attended; everyone who did this can feel comfortable they did their bit.

Reminder: Gippsland Water replies are due in; deadline is February 10th.

Your Community representative group invites you to attend meetings.

The next regular general meeting will be held on Tuesday February 7th at 10:00am.

Loch Sport CRG PO Box 129 Loch Sport 3851 or email lscrg@Lochsport.org.au.



LOCH SPORT LIONS CLUB



Lion Lance Patten selling raffle tickets in the Beverage Barrow at the Bush Market



Stalls at the Bush Market



Marina Beach Accommodation

Modern Chalet Style Cabins
 4 Available Sleep 6
 1 min from beach, Marina & Hotel
 Linen included
 Fully self-contained
From \$65.00 Off Peak
 (3 nights or more)
\$104.00 Holiday Period
PH: Loch Sport Marina
5146 0243



Need a labourer??

then call Ben on

0419 815 182
No job too small

The Loch Sport Lions have been busy over the Christmas/New Year period starting off with the Children's Christmas Party in December and the presentation of a Scholarship to one of our students at the Loch Sport Primary School. The Bush Market was held on 7th January and for a change we were blessed with excellent weather. This brought out the locals and holidaymakers to purchase their egg and bacon sandwiches and the sausage sizzle. There were a few new stalls this year and a variety of goods and craft items were available.

In January we sponsored 2 children from Loch Sport to the Licola Wilderness Village where they enjoyed numerous activities and met lots of other children from across Melbourne and other regional areas.

The Australia Day function was held at the Lions Park and the usual free sausage sizzle, lamingtons and pavlova were available. We celebrated Australia Day with the raising of the flag and singing the Australian National Anthem and the presentation of the Citizen of the Year Award. The raffle for the "Beverage Barrow" was also drawn and we must thank Dahlsens for their support in donating the barrow.

Once again Esso have provided funds for hampers for those who are in need or alone at Christmas. Each year Esso provide funds for these hampers and we are most appreciative for their ongoing support.

The Easter Festival will be held on Easter Saturday 7th April and we will again be serving early morning breakfast of egg and bacon sandwiches followed by sausages & onions a bit later on. Children's races

will be run and Easter eggs and medals will be awarded. We will also have our regular dog competition which is a favourite amongst the young and old and the gumboot and handbag throwing competition will be held for the mums and dads. So come along and join in the fun!!

Throughout the Christmas holiday break Bingo has continued to run and many visitors have come along to join in the fun so if you want to join in, Bingo is held every Wednesday starting at 1.00 pm at the Community Hall.

Unfortunately the Lions notices on the board opposite the Lodge have been the target of malicious tampering. For several weeks every notice which was erected was removed despite them being replaced 7 or 8 times.

We are at a loss to know why this occurred and why other notices in the town have been left untouched. During 2011 the Lions purchased the materials and reconstructed the old notice board which now provides more space and is easier to use.

We would like to publicly acknowledge the support provided to the Loch Sport Lions by Jill & Allan Hall at the Marina. They have provided us with the facility to run the lucky envelopes and allow us to sell raffle tickets for our fundraising. They have also participated in the Pick-A-Box and Calcutta events and provided us with raffle prizes on many occasions. Thank you Jill & Allan we really appreciate your support. We would like to wish everyone a HAPPY NEW YEAR!!

Judy Cox
 Publicity Officer



LOCH SPORT POLICE REPORT

Welcome to 2012 and I trust that everyone had a merry and safe Christmas.

I am pleased to say that Loch Sport and surrounds had a relatively quiet Christmas / New Year period (from a Police point of view!) and is a reflection of the quality of our local community and visitors alike. It was a shame that the weather cooled off and became more like winter, however a reasonable number of holiday makers stayed on and enjoyed themselves and supported our community.

I am aware that our C.F.A. has had to deal with a number of small fires e.g. bonfires etc and I urge everyone to be mindful of the current fire restrictions and the very real danger that a fire poses for the Loch Sport township. If you have a need for a fire

at your premises, please enquire with the Wellington Shire Council regarding the possibility of a permit.

I would suggest that it would be unlikely a permit would be granted as there is also by-laws regarding the burning of materials in your yards and these by-laws apply year-round regardless of the fire restriction period; please enquire with the Shire in the first instance as the penalties are quite significant.

If anyone has any subjects you would like me to comment on via LINK please let either myself or Marlene know and I'll do my best to address your enquiry.

Regards,

Peter Lock
 LSC 24548
 Loch Sport Police Station



Welcome to the year of 2012. We sincerely hope you all had a great time with either family or friends.

A lot happened in the last year with the passing of a few of our beloved Loch Sportians. Dot and Sarge Hanson, Marie Doherty, Debbie Fowler, and most recently Nell Hellyer. We will miss them dearly and offer our condolences to the family and friends of these great people. It is never easy saying goodbye to a loved and respected resident.

Remembrance Day was mentioned in the last newsletter, but I have received some feedback from the kids in attendance from the Primary School. I asked the teachers and helpers to give the children a piece of paper with the poem of the "Poppy".

Thanks to everybody that came to pay their respects. Here are a few of what the kids had to say in what the day meant to them and in their words and spelling.

"Remembrance day is about to remember people that were in the war." "And, they fout for us." "I like the sosiges."

Children's letters to the R.S.L.

"I like that we got to get her to remember the people in the war."

"What I was thinking when it was 2 minute silence was the people who fought in the wars to defend our country. But I was also thinking about the families who would have been suffering for the thought of their child in the war."

"Thanks you for the nice food R.S.L." "To remember about the people how went in the wars."

"The people how went in the wars saved Loch Sport and Sale?"

"They dun a verey good job to save Loch Spot and Sale."

"There were two world wars. They were probably just as bad as the other."

And lastly, this one.

"I was thinking about the people how they risk their life for us."

"I was standing there waiting till it finished."

I just love the way they put it. All the letters they wrote are for you posted at the bulletin board at the club. Come and have a look when you get a chance.

We want to wish Kirsty Marek, our club attendant, all the best on her new venture in her work place. She did a wonderful job for us and we thank her for all she did for us. And a thanks to all who work at the club.

A very happy birthday to all who have celebrated them over the past year and today. Joy Croft just turned the BIG 90!! And our own "Bluey" or real name Royce turns that mighty number on the 20th of January. Happy birthdays to you great and wonderful people of this community.

Our new bar trading and opening hours are as follows:-

Open at noon daily until further notice. The bistro will now provide meals Thursday to Saturday from 6 to 8 P.M. Bookings preferable and the courtesy bus is available.

As you might be aware, our term of office is up after two years and our AGM is on the 26th of Feb. All nominations close on the 12th of Feb. All positions will be open and I suggest that if you want to make a difference, put your name down and make it happen. I do firmly believe that a fresh crew and committee of Management is good for the Club. But remember, it takes a bit of grit and dedication to be part of the R.S.L. No need to put a name down and give it away for any reason other than health problems. We need stayers! We've done as well as we could and that's not patting ourselves on the back, more a duty of care for the continual operation for the club, members and the community as a whole. So, come and have a go. The club is viable and is going fantastic.

Thanks to all who support us. Have a great and safe New Year. Take care

Loch Sport R.S.L.
Opening Hours
12:00pm - Daily
Bar Facilities & Courtesy Bus
Regular Activities Include
Monday, 7:30pm - Darts
2nd & 4th Tuesday 8:00pm - Karaoke
Wednesday 7:30pm - Carpet Bowls
Thursday 6:00 - 8:00pm - Members Draw
Saturday Bingo Eyes Down 1:00pm
Thursday & Saturday evenings - Raffles

Loch Sport R.S.L. Bistro
Meals - 6:00 - 8:00 pm
Thursday, Friday & Saturday nights
Bookings Preferred but not essential
TEL 5146 0841

FENCING CONTRACTOR

Ring Peter
51460060

All types of fencing


Pulse Pharmacy Sale
Shop 3 398 - 424 Raymond Street
Sale, Victoria 3850
Ph: (03) 5144 7447
Fax: (03) 5144 7329
Providing you with all your Prescription, Medication, Vitamin and Baby ware needs.
Free Delivery Service to Loch Sport
With a friendly Pharmacist always available for your health needs and enquiries.

			5	9		1		3
		9			6	5		7
	6			1				
						2		9
		6	7		3	4		
4		5						
				7			4	
6		4	1			3		
9		1		3	5			

Sudoko
~~
Answers on page 23



FEBRUARY
 Sat 11 & Sun 12
 Eastern Region Regatta L.V.Y.C.
MARCH
 Sat 10 & Sun 11
 - Marley Point overnight race;
 - Eastern Region Regatta re-sail
 L.V.Y.C.
 Sat 24 & Sun 25
 - Hartley TS 18/21 Club State
 Championships
 Mon 26 – Fri 30
 - Braemar College Sailing Camp
APRIL
 Mon 2 – Thur 5th
 - GIBS basic package



Starting in February the bar will only open Friday nights from 6pm and open Saturdays when events are scheduled on Saturdays or a holiday weekend. Morning teas are Sundays and Wednesdays 10.am.

Twilight sailing every Saturday will commence on Saturday 28th January starting time 4pm. Any off the beach sailing boat and TS can participate.

Girls Night in for cancer research will be held at the clubrooms on Saturday 27th October mark this in your diary.

We welcome everyone to all our events please call in and support our club, which is a level 3 Good Sports Club.

Sailing classes – GISBS Early January sailing course was very well attended with 3 adults and 9 children 9 – 16 yrs obtaining level 1 pass.

More Get into small boat sailing courses conducted by the LSBC will be held in Late January and April places are filling quickly contact Barry 03 51460 938.

The club has purchased new sailing dinghies for the training. GISBS Basic Package – January Monday 23rd to Friday 27th GISBS Basic Package – April Monday 2nd to Thursday 5th

Members who complete to level 2 on can use the club dinghies at events and activities at the club with guidance from the experienced members. Become a member to avail yourself of this facility, Annual Junior membership

is \$25 Senior \$95.

HARTLEY TS CHAMPIONSHIPS

Loch Sport will be host to this class of trailer sailor come along and sit on the balcony and watch these competing. Sat 24th Sun 23rd March.

March 26 to 30 Braemar College students will be visiting for their annual sailing camp. These kids travel from Wood End, the other side of Melbourne to experience the pleasure of sailing and camping on our part of the Lakes.

The LSBC has offered sponsor ship for resident Loch Sport children for years yet many do not take it up. Maybe it is not cool to be seen having fun out on the lake in a sailing dinghy, or maybe they are just shy!! You may meet your next best friend.

WEATHER CAM = WEATHER STATION

Loch Sport has a weather station, to check weather details go to www.loch-sport.net select weather cam. Images over the foreshore, temperature, wind speed, rainfall etc updated every 5 minutes. This Weather Cam has been a popular addition to the club, at this stage there has been over 40,000 hits since July last year.

Advertising on the weather cam.

Your business can have a banner on the website for \$240 per year, we can set it up for you, contact Kaye 0408556993.

*Kaye Hogben
 Publicity*

CherCol - ectables
Licensed Second Hand Goods

Lot 12 Progress Rd Loch Sport
 (on road to transfer station)
 Open
 Saturday 12:30 - 3:30pm
 Sunday 12:30 - 2:30pm
 All holiday hours will be
 advertised on notice boards
 Please come and browse
 Ring 5146 0464
 for information



WELLINGTON SHIRE

In 2011 Wellington Shire Council's Customer Service Centre in Sale alone answered 44,488 calls and served 22,293 customers at the counter.

To ensure it remains aware and focused on community expectations for customer service, Wellington Shire Council is conducting a review of its current Customer Service Charter.

We are asking all residents to read the draft and provide feedback before 24 February 2012.

The draft document seeks to balance community expectations with what is realistic and achievable within Council's current resources.

The document includes a list committing Council to set response times.

The draft Customer Service Charter also makes a commitment to communicating in plain language; treating customers courteously and with respect; and treating them as individuals while seeking to understand their needs.

As in all relationships responsibilities sit with both parties involved. The

Charter also outlines what is expected of Council's customers. These are designed to ensure positive, professional working relationships between all Council Officers and the community.

The draft Customer Service Charter is available at the Customer Service Centres in Sale and Yarram; all Council libraries including the mobile library; Aqua Energy, the Entertainment Centre and the Gippsland Regional Sports Complex (GRSC). It is also available at www.wellington.vic.gov.au Council Officers will also be attending various markets and community group meetings to gather feedback.

The draft document includes details of how submissions may be made for consideration as Council progresses towards finalising its Customer Service Charter. You may order a copy of the draft to be posted to you by phoning 1300 366 244.

GRANT
The Silicon Man
 ABN 61 177 477 822
0428 356 957

Architectural Corking
 Broken Window Replacement
 Pensioner Discount



LOCH SPORT SES



Another year has started with Loch Sport SES forging ahead.

The new SMS Radio System has been installed in our local SES Headquarters, the Unit vehicle and the 2 boats.

We have had a large generator donated to the Unit which we are hoping to have connected to the Unit power supply so that in case of a long term blackout, our SES will have the power for lighting and to keep the radio/communications systems running.

Three new members from Golden Beach have signed up with another six people expressing interest in joining the unit.

Training is going to be full on for both old and new members. The controller

anticipates that all new members will be fully trained and operational by mid 2012.

With the large increase in membership, Loch Sport SES will have the capacity to cover all operations and have enough members to have 2/3 teams on standby for change over crews if the need arises.

Associate Members are needed at the unit to assist with communications, etc in the time of a large operation.

Associate Members are only required to do a First Aid Course and are supplied with a basic SES uniform. Gordon - Controller - 0428888312, Helen - Deputy Controller - 04483230100.

If assistance is required from the SES please ring 132 500.

Loch Sport Fish & Chips

Open 7 Days 10:30 to Late
Phone Orders: 5146 0606

Boneless Fish Fillets - Cooked Fresh
Flake, Whiting, Barramundi, Snapper
Homemade Hamburgers
Egg & Bacon Rolls
Homemade Spring Rolls
Calamari Rings - Prawn Cutlets
Pineapple & Banana Fritters

Tea & Coffee

Milkshakes

Pedal Boat & Canoe Hire
Lion's Lake Reserve



LOCH SPORT RED CROSS UNIT

We would like to thank members and volunteers for all their help at our garage sale on the 8th January at Cove Street.

Many thanks for the donations of saleable goods for our fund raising. We look forward to seeing you all at the sausage sizzle on March 11th at

the Community Hall Market.

The raffle was won by ticket Red F16. The next Red Cross meeting will be held on the first Tuesday in March at 11.00am at Hilary's - 9 Cove Street, Loch Sport.

Thanks again

Hilary



LOCH SPORT GOLF CLUB

The committee of the LSGC hope that everyone had a safe and happy Christmas & New Year.

Our season started on 14th January and we would welcome anyone to join in our competitions on Wed & Sat. Sign in time is 8:30am and playing starts at 9:00a, until the end of March when we revert back to 9:30am sign in and 10:00am hit off.

We are hosting the 2012 Victorian Sandgreens Championship for men on the weekend of 6th - 8th July.

This is a huge event for a small volunteer club and will bring 100's of people into Loch Sport for that weekend. We would welcome any assistance from the community. If this is a successful event, we would be in line to host it every 3 - 5 years; it would introduce Loch Sport to a huge range of communities in Victoria including Melbourne.

Please ph 5146 0922 for any further information.

LIZARDZ PIZZA

ALL YOUR FAVOURITES
FRESHLY GROUND COFFEE
ICE COLD SLUSH PUPPY
GELATI & SOFT SERVE
5146 0111



LOCH SPORT BOWLING CLUB INC.

Due to popular demand Muzz and Mrs Jones will return to the Bowling Club some time in March.

Stay Tuned!

Come and join us for social bowl every Wednesday & Sunday afternoon **Barefoot bowls 430 til dusk**

The community house are putting out a challenge. Put together your best team and take us on.

To all tradies, businesses, local organisations and residents -

Put together a team and join us on the

Loch Sport Bowling Club green at 4:00pm Saturdays.

Drinks are available at extremely reasonable prices. (Cheapest in town) FOB will be donating a trophy to the winning team at the end of the season.

There will be a barbeque for sustenance during the heat of battle.



LOCH SPORT TENNIS CLUB

The tennis club had a very successful Christmas break-up, combining with the Angling Club.

The club would like to remind club members that the monthly BBQs are

still on the go. All members of the public are welcome to come along and join in the clubs social days on Sunday mornings from 9:00am til lunch time.

R Hampson

**Barry & Annette Lett
Funeral Directors**

Care, Compassion
and Service with dignity
for the people of Gippsland

Prearranged and Prepaid
Funeral Plans available

Phone (03) 5143 1232

67 Macarthur Street Sale

24 Hour Personal Service



Model—Sharp TV with digital box

Excellent working order

Great buy—possibly for holiday house

Ph Joan 5146 0625
\$50 and its yours



This is your community newsletter

Please send us information regarding your organisation if you are not already advertised.

Let us know when you celebrate a milestone births, major birthdays or anniversaries.

If we have lost a current or past resident We also need interesting articles, comments or pictures from you Please direct your mail to lsch@netspace.net.au or P.O. Box 587 Loch Sport 3851



Save The Date
Saturday 27th October
Loch Sport Boat Club



To our new residents who have come to the conclusion that Loch Sport is just too good to only visit on weekends or for short holidays we extend a warm welcome.

OUR COMMUNITY

~ We say Farewell ~



Helen Wykes

04/10/1937 ~ 26/12/2011

Helen was a passionate golfer and loved to fish. Her two passions were well catered for in Loch Sport. She was a member of the Loch Sport Golf Club and secretary of the Loch Sport Ambulance Women's Auxiliary.



Nell Hellyer

27/11/1933 ~ 07/12/2011

Nell was a dedicated member of the Catholic Church. Her 23+ years of support for the local R.S.L included president of the Women's Auxiliary for 11 years. (even getting on her knees to tile the floor) She was



Deb Fowler

15/06/70 ~ 16/12/2011

Before leaving Loch Sport, Deb was an active community member; managing the Post Office, owner of "Lochies Fish n Chips" and playing an active role at the local Fire Brigade while her husband, Darren, was Captain. Deb represented Australia in the World Transplant Games in Canada & Bangkok winning numerous medals in running, badminton, high jump and the relay.

~ Congratulations ~



Joy Croft

10/01/1922

Joy celebrated this wonderful milestone with a morning tea with local friends which was followed by a family luncheon at 'Relish at the Gallery' in Sale.



Royce Bernoulli

19/01/0922

Royce celebrated his 90th with family and friends at the Loch Sport R.S.L.



Daryl Stevens & Lisa Timms

were married at Lisa's son's home in Yallambie, Melbourne on 23rd December.

It was a wonderful day, with the bride and groom hosting a garden reception for about 20 close relatives. Many thanks to all those who have wished us well.



Grace Germano & Russell Thomas

were married on 15th October. Family and friends joined them for the wedding & reception at Poets Lane in the Dandenong Ranges.



MONDAY	10:00am	Community Health Centre	Tai Chi	In recess
	10:00am	Public Hall	Model Boat Building	In recess
	1:15pm	Bowling Club	Carpet Bowls	Names in by 12:15pm
	1:30pm	Public Hall	Fitness Program	
	7:30pm	RSL	Darts	
1st MONDAY	1:00pm	Mini Golf	CHC Support Group	
	6:00pm	Various Venues	Book Club	
2nd MONDAY	10:00am	Public Hall	Community House General Meeting	
3rd MONDAY	10:30am	Public Hall	Loch Sport Senior Citizens	
	2:00pm	RSL	Womens Auxiliary Meeting	
TUESDAY	9:30am	Public Hall	Craft Group	
	10:30am	Public Hall	Fire Ready Communities	
	10:30am-1:00pm	Lake Street	Mobile Library	
	2:00pm-4.30pm	Lake Street	Mobile Library	
	12:00noon	Public Hall	Ancestry Group	
	7:00pm	Public Hall	Quilting Group	
1st TUESDAY	10:00am	Public Hall	Community Representative Group	
	10:00am	Community Church	Catholic Mass	
2nd TUESDAY	10:00am	Ambulance Station	Ambulance Victoria	February-December
	7:30pm	Public Hall	Lions Club	
	7:30pm	RSL	Karaoke	
2nd TUESDAY BI-MONTHLY	1:00pm-2:00pm	Community Health Centre	Health Centre Representative Group	
4th TUESDAY	7:00pm	Public Hall	Lions Club	
WEDNESDAY	9:00am	Sale Pool	Wednesday Swimming	
	8:30am	Golf Club	Players with ALGU/AGU handicaps	Bar service available
	12:30pm	Bowling Club	Lawn Bowls	Names by 12:15pm
	1:00pm	Public Hall	Lions Bingo	
	3:00pm	Public Hall	After School Program	
	7:00pm	Public Hall	Easy Ballroom	
1st & 3rd WEDNESDAY	10:00am	Bowling Club	Jackpot Bowls	Book by 9.30am
2nd WEDNESDAY	1:30pm	Community Health Centre	Neighbourhood Watch	
1st,2nd&3rd WEDNESDAY	7:30pm	RSL	Carpet Bowls	
THURSDAY	9:00am-noon	Tennis Club	Tennis Club	
	10:30am-1:00pm	Lake Street	Mobile Library	
	2:00pm-4.30pm	Lake Street	Mobile Library	
	6:00pm	RSL	Happy Hour	Draw & Raffles
	6:00pm-8:00pm	RSL	Meals	
FRIDAY	9.30am	Mini Golf	Walking Group	
	9:30am	Public Hall	Dancing to Music	
	12:00noon	Public Hall	Art Group	In recess
	2:00pm	Public Hall	Muckabout Band	
	6:00pm-8:00pm	RSL	Meals	
	6:00pm	Loch Sport Boat Club	Social Drinks	All Welcome
SATURDAY	9:00am	Sale Pool	Saturday Swimming	
	8:30am	Golf Club	Players with ALGU/AGU handicaps	Bar service available
	1:00pm	RSL	Bingo	
	1:30pm	Bowling Club	Social Bowls	
	4:00pm-8:00pm	Bowling Club	Barefoot Bowls	
	6:00pm-8:00pm	RSL	Meals	
SATURDAY MONTHly	8:00pm	Public Hall	Social Dance	
SUNDAY	9:00am-1:00pm	CFA Station	Garage Sale	5146 0967
	9:30am-1:00pm	Tennis Club	Relaxed Social Tennis	
	12:30pm	Bowling Club	Bowling Club	Names by 12:15pm
	10.00am	Public Hall	Assembly of God	
2nd & 4th SUNDAY	10:30am	Community Church	St Marks Anglican & Comm Church	

**ARIES ~ Mar 21- Apr 20**Colour: Yellow Day: Tuesday
Numbers: 2,4,5,6. Lotto: 2,14,34,22,1.

You like success and all that comes with it and during this period you could be quite an achiever. A promising time although restlessness brings a tendency to take risks. Be extra careful around loved ones. Socialising with new found friends might not be successful best to stick with the ones you know. Make sure all your business dealings are above board and keep away from risky deals. You could need to be very tactful to manage domestic and business affairs in harmony. Good planning is the best for successful results and handle each problem as it comes. A very romantic period and someone special could delight you with their presence. Tackling issues with some positive thought will help you to get good results.

**TAURUS ~ Apr 21- May 20**Colour: Blue Day: Wednesday
Racing: 8,9,5,6. Lotto: 8,9,34,42,33,5.

An excellent time to embark on new ventures. Others may not see your point of view as clearly as you do. However, persevere. More success in the artistic field. Encouragement by family and friends will go a long way. Loved ones should be a source of much happiness. Do not let anyone sway you from your chosen path. Extra care should be taken when travelling. Business and career problems should be easier to cope with and better times are ahead. Official and legal documents should be taken good care of and not signed if in doubt. A period in which you should be only dealing with facts - intuition might not be right. If your loved ones are willing you could mix business with pleasure successfully.

**GEMINI ~ May 21 - June 21**Colour: Cream Day: Thursday
Racing: 7,8,9,3. Lotto: 1,14,23,34,45,22.

An inner need for change is indicated; many will be changing lifestyles and widening their circle of friends. A very busy period in which you may hardly have time to draw a breath. You should be popular and in demand. There could be some mix up with your recreational or social plans. You might have to postpone your travel until later. There should be a happy surprise soon. This should be a very prosperous period in business affairs. Make sure you read the fine print and consult your legal advisor if in doubt. Improvements in your love life. If planning travel or moves make sure you recheck all appointments and reservations. Some beneficial information from a distance could help you in your business ventures.

**CANCER ~ Jun 22 - Jul 22**Colour: Violet Day: Tuesday
Racing: 7,9,2,4. Lotto: 1,15,23,34,41,22.

Could be a wise time to push your personal plans and make your ideas known to those concerned. Make sure your facts are right before offering advice to others. Romantic times ahead. Family life could give you some problems during this period. Rushing around without too much thought is not getting you anywhere stop and think and plan. Not a good time for business decisions. Not a good period for confidences something you did not want to be known could surface anyway. Romantic notions could spoil your good start in your business affairs. You could be asked to help someone but tread very carefully in peoples personal affairs. Your judgement might not be up to par so decisions should be left until a later date.

**LEO ~ Jul 23 - Aug 22**Colour: Brown Day: Sunday
Racing: 1,4,2,1. Lotto: 1,12,23,34,37,45.

You may not be seeing eye to eye with all around you no need to get upset. Keep your cool and you will gain your way. Anxiety and restlessness could be the picture if you are not positive in your outlook and actions. Not a good time to mix your working life with loved ones. Best would be to take it easy and let things happen on their own account so you cannot be blamed for something. Home life should be more harmonious and people should be able to understand your point of view. Do not get yourself into a position where people can steal from you. There could be some gossip about you and you could find out something about someone else. Social life in general could get very hectic so make sure you get some rest also.

**VIRGO ~ Aug 23 - Sep 23**Colour: Orange Day: Monday
Racing: 5,7,6,2. Lotto: 1,16,26,39,41,3.

A time of changing scenes; some of the moves you make could be luckier in forethought and will and this can be avoided- self deception could lead you down the wrong track. Think and act moderately in all affairs. There could be big upheavals in your love life but if in an good relationship do not rock the boat. Moves and travel indicated for many and some could travel for work. Tact and understanding are the best weapons for this period. You could be tempted to act out of character but wiser to stick to the old and tried as changes could worry some. Much improved situation in your financial dealings and more time to do what you really want to. Keep away from situations that could irritate you or get you into trouble.

**LIBRA ~ Sep 24 - Oct 23**Colour: Silver Day: Monday
Racing: 2,6,7,9. Lotto: 1,6,23,37,7,22.

Contacts that you make during this period could be very advantageous at some future time. Be very conscious of your safety and do not place yourself in a position with an element of risk. Some big changes in your working life and celebrations in the family. Romance should also improve and more attention from the right quarters for your working conditions. There could be some changes in your travel plans and problems with someone's accommodation could effect you. An old flame could re kindle something you thought lost. A very good period for romantic interludes but not to take everything too seriously. During this period many could marry or improve on an ongoing relationship.

**SCORPIO ~ Oct 24- Nov 2**Colour: Lemon Day: Saturday
Racing: 7,9,2,4. Lotto: 1,6,23,38,36,30.

Words spoken in haste may be difficult to recall; think before you speak. You need to read the small print before signing any form or agreement. Show loved ones that you care; they in turn will put more pep into your love life. Not a good period for affairs of the heart. Try to keep good relationships with friends and neighbours going and not trying to out do anyone. A very busy social life could lift your spirits a little and some of your not so good relationships should improve. The singles could be in for a surprise romance. Important period for your relationship matters make sure your loved ones know what you really mean. Not a good time to mix business and pleasure and work place romance might not work

**SAGITTARIUS ~ Nov 23 - Dec 20**Colour: Cream Day: Friday
Racing: 1,4,1,7. Lotto: 1,17,23,38,36,5.

New contacts could be more important to you now. Restlessness will have most outdoors more. An interesting and more rewarding period; money comes easier and financial luck will find most. A very tense period; you may get caught in an argument with people about trifles; don't take things personally. Don't lend or borrow as deception is possible. Don't repeat past errors and get yourself into another mess. If you find it hard to remember things, make sure you write down important dates etc; this should be a happy time with loved ones. Should be a very good period for good luck and favourable influences in many aspects so keep your eyes open for opportunities and chances that might only come once. For seekers of love, some good luck.

**CAPRICORN ~ Dec 21 - Jan 19**Colour: Green Day: Thursday
Racing: 5,7,9,3. Lotto: 1,4,23,28,33,3.

Careless actions slow you down; progress needs concentration. Success for the artistically minded; romance could be swinging; all the extra attention may be flattering. People may take an interest in you. You may be considered for something important; keep your good humour. Very good news from far away. If you have worked hard in the past you should be able to reap some benefits from it now. Time for a nice chat with loved ones, show them that you care if they feel neglected for some reason. Your domestic and social life might not mix well during this period people might feel left out. You might have to change your plans or delay things as many ideas could be postponed for the time being.

**AQUARIUS ~ Jan 20 - Feb 19**Colour: Apricot Day: Friday
Racing: 4,7,8,9. Lotto: 1,16,23,35,45,11.

Do not hesitate to contact influential people; unimagined changes could work to your advantage. Beware of being gullible; someone scheming deception is a distinct possibility. Careful planning beforehand leads to success; check all appointments. Someone will be ready to help when you need it; don't worry about the future. You could be meeting someone who could have a great impact on your future or someone from your past could change a few things. People are seeking your company you will be very popular and able to enjoy life to the fullest. Any important information to your financial or real estate matters should be double checked. Some big moves around you and some of them could concern you personally so keep your ears and eyes open.

**PISCES ~ Feb 20- Mar 20**Colour: Fawn Day: Wednesday
Racing: 4,7,2,4. Lotto: 1,16,23,36,41,9.

Stop dwelling inwardly; you're making yourself thoroughly miserable. Take life as it comes; you should see much improvements soon. Friends should be wonderful to be with; love relationships get happier. Big changes may be coming very soon; you could be called upon to help entertain people or do some charity work for a good cause. A very happy mood should prevail; you could feel energetic and ready to tackle any job. Health improvements; some big surprises coming up very soon. You could also be lucky. Keep your purse strings very tight this period as someone might try to talk you out of your cash. In investment etc. you should consult a professional person and do not pay for something you have not got yet.

Wed 1	4:13am	1.4	Thu 9	4:20am	0.4	Fri 17	5:52am	1.6	Sat 25	5:53am	0.5
	11:00am	0.7		10:40am	1.8		12:55pm	0.4		12:00md	1.5
	4:37pm	1.1		5:15pm	0.2		6:55pm	1.2		6:09pm	0.5
	10:23pm	0.7		11:24pm	1.5	Sat 18	12:16am	0.6	Sun 26	12:27am	1.5
Thu 2	5:12am	1.4	Fri 10	5:10am	0.4		6:55am	1.7		6:35am	0.5
	12:13pm	0.7		11:26am	1.8		1:55pm	0.3		12:36pm	1.4
	5:58pm	1.1		5:55pm	0.3		7:54pm	1.2		6:39pm	0.5
	11:24pm	0.7	Sat 11	12:08am	1.5	Sun 19	1:18am	0.6	Mon 27	1:02am	1.5
Fri 3	6:11am	1.5		6:02am	0.4		7:51am	1.7		7:20am	0.6
	1:15pm	0.6		12:13pm	1.7		2:44pm	0.3		1:15pm	1.3
	7:06pm	1.1		6:35pm	0.3		8:43pm	1.3		7:10pm	0.6
Sat 4	12:22am	0.7	Sun 12	12:54am	1.6	Mon 20	2:13am	0.5	Tue 28	1:41am	1.5
	7:04am	1.6		6:58am	0.4		8:40am	1.7		8:10am	0.6
	2:04pm	0.5		1:03pm	1.6		3:26pm	0.3		1:59pm	1.2
	7:58pm	1.2		7:18pm	0.3		9:26pm	1.4		7:48pm	0.6
Sun 5	1:14am	0.6	Mon 13	1:42am	1.6	Tue 21	3:02am	0.5	Wed 29	2:25am	1.4
	7:51am	1.6		8:00am	0.4		9:26am	1.7		9:08am	0.7
	2:45pm	0.4		1:58pm	1.4		4:05pm	0.3		2:53pm	1.1
	8:41pm	1.2		8:04pm	0.4		10:07pm	1.4		8:34pm	0.7
Mon 6	2:01am	0.6	Tue 14	2:35am	1.6	Wed 22	3:48am	0.5			
	8:34am	1.7		9:09am	0.5		10:08am	1.7			
	3:24pm	0.3		3:00pm	1.3		4:39pm	0.3			
	9:22pm	1.3		8:56pm	0.5		10:43pm	1.4			
Tue 7	2:47am	0.5	Wed 15	3:35am	1.6	Thu 23	4:30am	0.5			
	9:15am	1.8		10:25am	0.5		10:47am	1.6			
	4:00pm	0.3		4:16pm	1.2		5:10pm	0.3			
	10:00pm	1.4		9:58pm	0.6		11:19pm	1.5			
Wed 8	3:33am	0.5	Thu 16	4:42am	1.6	Fri 24	5:11am	0.5			
	9:57am	1.8		11:43am	0.5		11:24am	1.6			
	4:38pm	0.2		5:40pm	1.1		5:40pm	0.4			
	10:41pm	1.4		11:08pm	0.6		11:54pm	1.5			

Moon Phases - Full - 8th 3rd Qtr - 15th New - 22nd

Tide Chart courtesy of Helen McFarlane



**WELLINGTON COMMUNITY
NO INTEREST LOANS SCHEME
(NILS)**

**provides no interest loans for
low income consumers**

This scheme has been set up to assist people with the purchase or replacement of household appliances such as refrigerators & washing machines and also educational or medical special needs items.

Small loans for any other worthwhile purpose will be considered.

Interviews are available in Sale, Maffra and Yarram.

To apply please contact:

- Uniting Care Gippsland - 51447777
- CAVA - 51438889
- St Vincent de Paul - 51444183
- Yarram & District Health Service - 51820222

Sudoku Answer

2	8	9	5	3	4	1	7	6
5	7	3	6	8	1	4	2	9
1	4	6	2	7	9	8	5	3
9	3	7	1	2	6	5	8	4
8	1	4	3	5	7	9	6	2
9	5	2	4	6	8	7	3	1
4	9	8	7	1	2	3	9	5
7	2	5	9	4	3	6	1	8
3	6	1	8	9	5	2	4	7

Thu 1	3:17am	1.4	Fri 9	4:09am	0.4	Sat 17	5:36am	1.6	Sun 25	5:33am	0.5
	10:13am	0.7		10:23am	1.8		12:35pm	0.4		11:37am	1.4
	4:01pm	1.1		4:42pm	0.2		6:45pm	1.2		5:25pm	0.6
	9:34pm	0.8		10:55pm	1.7	Sun 18	12:12am	0.7		11:46pm	1.6
Fri 2	4:19am	1.4	Sat 10	5:01am	0.3		6:39am	1.6	Mon 26	6:13am	0.5
	11:25am	0.6		11:12am	1.7		1:29pm	0.4		12:16pm	1.3
	5:25pm	1.1		5:23pm	0.3		7:38pm	1.3		5:55pm	0.6
	10:43pm	0.8		11:40pm	1.7	Mon 19	1:14am	0.6	Tue 27	12:20am	1.6
Sat 3	5:25am	1.5	Sun 11	5:56am	0.3		7:34am	1.6		6:55am	0.5
	12:29pm	0.6		12:04pm	1.6		2:14pm	0.4		12:56pm	1.3
	6:35pm	1.1		6:06pm	0.3		8:22pm	1.4		6:29pm	0.7
	11:50pm	0.7	Mon 12	12:26am	1.7	Tue 20	2:08am	0.6	Wed 28	12:57am	1.6
Sun 4	6:25am	1.5		6:55am	0.3		8:21am	1.6		7:42am	0.2
	1:22pm	0.5		12:58pm	1.5		2:53pm	0.4		1:40pm	1.2
	7:27pm	1.2		6:52pm	0.4		9:01pm	1.4		7:09pm	0.7
Mon 5	12:48am	0.7	Tue 13	1:17am	1.7	Wed 21	2:54am	0.5	Thu 29	1:40am	1.5
	7:16am	1.6		7:57am	0.3		9:04am	1.6		8:34am	0.6
	2:06pm	0.4		1:57pm	1.3		3:27pm	0.4		2:32pm	1.2
	8:10pm	1.3		7:41pm	0.5		9:37pm	1.5		7:55pm	0.8
Tue 6	1:40am	0.6	Wed 14	2:11am	1.7	Thu 22	3:36am	0.5	Fri 30	2:29am	1.5
	8:03am	1.7		9:05am	0.4		9:44am	1.6		9:33am	0.6
	2:45pm	0.3		3:04pm	1.2		3:57pm	0.4		3:35pm	1.1
	8:50pm	1.4		8:39pm	0.6		10:10pm	1.5		8:55pm	0.8
Wed 7	2:29am	0.5	Thu 15	3:14am	1.6	Fri 23	4:15am	0.5	Sat 31	3:28am	1.5
	8:48am	1.7		10:18am	0.4		10:23am	1.5		10:36am	0.6
	3:24pm	0.3		4:22pm	1.2		4:27pm	0.5		4:48pm	1.1
	9:30pm	1.5		9:46pm	0.7		10:42pm	1.6		10:05pm	0.8
Thu 8	3:18am	0.4	Fri 16	4:25am	1.6	Sat 24	4:54am	0.5	Sun 1	4:35am	1.5
	9:35am	1.8		11:30am	0.4		11:00am	1.5		11:36am	0.6
	4:02pm	0.2		5:40pm	1.2		4:55pm	0.5		5:55pm	1.2
	10:11pm	1.6		11:01pm	0.7		11:14pm	1.6		11:16pm	0.8
Moon Phases - 1st Qtr - 1st & 31st Full - 8th 3rd Qtr - 15th New - 23rd											



This newsletter is supported by Wellington Shire Council

GARY POWERS
REAL ESTATE PTY. LTD
 56 Lake Street, Loch Sport. 3851
Loch Sport & Ninety Mile Beach

- ◆ House blocks from \$50,000
- ◆ Holiday Homes from \$129,00

Being the longest established Real Estate Agency in Loch Sport we have put together a substantial list of holiday homes. We cater for families up to 11 people or a romantic weekend for two.

All properties can be viewed and booked at www.garypowersrealestate.com

Make your next holiday special

Ph: (03) 5146 0411 Mobile: 0428 514 088