



Loch Sport Link

April - May 2011

LINK now available online - www.lochsport.org.au

Gold Coin Donation



Loch Sport Community Representative Group Inc.

Are You Passionate About Loch Sport?

Everyone at your CRG is and you can help.

The Loch Sport Community Representative Group (CRG) has been made aware that some members of our community are not aware of what our group represents and what its aims are. Here is a prelude:

The Loch Sport C.R.G as been active since its formation in May 2006 when people responded to the call for people who were passionate about Loch Sport to attend a public meeting .The "Group" became incorporated in 2009 which means the group is now independent of Council and can apply for grants and tackle projects.

Over this period the CRG has;

- Developed first community Plan after community consultation;
- Held community Emergency Awareness days;
- Created 5000 Emergency pocket information booklets which provide information for fire and flood, contact details who to call and where to listen. Collect at CFA;
- Held 2 funding workshops for Loch Sport clubs and groups and represented same at Shire Council funding prioritisation panel.

Next Funding Session Monday 2 May Loch Sport Hall 7pm - 8:30pm;

- Made submissions to draft Budget to have roadside pathways developed;
- Instigated repairs of all broken streetlights 2008 and lobbied Telstra to retain pay phones;
- Guided councillors around Loch Sport highlighting the problem areas and then held a Presentation to council re these problems;
- Liaison/support of public information regarding sewerage;
- On-going meetings with Gippsland Ports for replacement of Deep Water Mooring jetty, funding now available;
- Identified problems encountered with launching ramp at seagull drive;

- Requested swimming/non-boating areas to be more defined;

The CRG meets the 1st Tuesday of every month 10am at the Community Hall. Representatives of all clubs/organisations, residents, and on some occasions, council representatives, meet to give a synopsis of what is happening or has happened at Loch Sport.

All groups and clubs should ensure that their representative attend these meetings to have your say and ensure their needs and future plans are taken into consideration.

The CRG currently has some 98 members, all receive copies of all minutes and e-mails regarding "What's On at Loch Sport" on a regular basis. Membership is \$5 annually with a \$2 joining fee.

This helps with administration costs. Visit the website www.lochsport.org.au CRG for copies of plans and studies and membership applications forms

If you feel passionate about Loch Sport, be proactive; get involved with this group as there is strength in numbers.

If you live in Loch Sport or have a residence here and want to know more about your local CRG then please contact:-

President Bill Klein - (5146 0516)
write to LS CRG PO BOX 129 Loch Sport 3851
or e-mail lscrg@lochsport.org.au

Come and join your local C.R.G. and help us become a voice for our community that achieves results. We strive to be a place where the community can come together to work in a practical way for its future direction.

Car Boot Sale
Sunday 24th April

9:00am - 2:00pm

Car Park
Public Hall
National Park
Road




Loch Sport
Ph Office 5146 0145
for bookings
or further enquiries

Payment required on booking

**Loch Sport
Community House Inc.**

**Membership Fees 2011
are now due**

Please pay at the office



CONTENTS	Pg #
Community Information	2
Community House News	3
Nature Watch	4 - 5
Community House Groups	6
Advertisers	8 - 11
Community Groups	12 - 17
Wellington Shire News	18
Community News	19
Calendar of Event	21
Horoscopes	22
Tide Charts	23 - 24

Community Information

The LINK is a Loch Sport Community House Inc. publication aimed at providing news, information and entertainment to its readers.

Physical Address: Public Hall
National Park Road
Loch Sport

Mailing Address: P.O. Box 587
Loch Sport
Victoria 3851

Phone: (03) 5146 0145

Fax: (03) 5146 0195

Email: lsch@netSPACE.net.au

Web: www.lochsport.org.au

THE LINK IS AVAILABLE FROM:-

- The Lodge
- Mini Golf Sanctuary Cafe
- Loch Sport Bakery
- Loch Sport General Store
- Loch Sport Fire Shed (op shop)
- Loch Sport Fish & Chips
- Loch Sport Holiday Park
- Doogies Pizza
- Gary Powers Real Estate
- FOB Real Estate
- Loch Sport Marina Hotel
- Online -www.lochsport.org.au
- Tourist Information Centre - Sale
- Golden Beach Foodarama

LINK CONTRIBUTIONS:-

Deadline for articles & advertising for April/May issue is

May 13th 2011 and can be lodged by the following means:-

Text: - email
word 97 doc*
(not word 2007)
- memory stick/disk

Photo/artwork:

- physical prints of artwork
- memory stick/disk

in one of the following computer graphic formats: BMP, GIF, JPG*
Please limit file size to under 1 meg
Please no handwritten or typed articles

DISCLAIMER

"Views expressed by the contributors are theirs alone. They are not endorsed by the Loch Sport Community House Inc. or the editors. No responsibility is accepted by the "LINK", its editors or printers for the accuracy of information contained in text and advertisements. Neither the editors, nor the Loch Sport Community House Inc. nor its committee in any way endorses or takes any responsibility whatsoever for any material contributed. All contributions must be accompanied by the full name, address and telephone number of the contributor for verification purposes, not publication."

COASTAL BUS SERVICE

	Mon & Fri	Wed
Departs		
Sale GCS	08:40	<=
Loch Sport (Wallaby St)	09:30	9:30
National Park Gate	09:35	09:35
General Store	09:45	09:45
Golden Beach	10:10	10:10
Longford	10:30	10:30
Sale Centre	10:40	10:40
Sale - Hospital	10:45	10:45

Return

Sale - Hospital (from)	4:15	1:20
Sale Railway	4:20	
Sale Centre	4:30	1:30
Longford	4:40	1:40
Golden Beach	5:00	
Loch Sport Turn-off	5:10	2:10
General Store	5:25	2:25
National Park	5:35	3.35
Swan & Wallaby	5:40	3.45

Paradise Beach Passengers

MUST BOOK Little's Coaches

51 44 2623 by 4 pm previous workday



MOBILE LIBRARY

Lake Street Car park

Tuesday & Thursday

10:30am - 1:00pm

2:00pm - 4:30pm

Books, talking books, DVD's,

videos & music CD's

View the range of items

for your entertainment, hobbies & crafts.

Research and membership

is free for the family

TIP TIMES

Mon 12 pm- 4 pm

Fri, Sat, Sun 12 pm - 5 pm



LOCH SPORT PUBLIC HALL

National Park Rd

For Hall bookings
please phone

5146 0145



Loch Sport

Community Health Centre

Nurse available - Mon to Fri

Administration Hours

Mon - Thurs 8:30am - 12:30pm

for nurse or doctor appointments

& payment of accounts

The doctor is available

for appointments

all day Tuesday

5146 0349

EMERGENCY NUMBERS

Ambulance 000

Report Fire 000

Police 000

L.S. Police (currently unavailable)

L.S. Health Centre 5146 0349

RACV 5146 0511

Red Cross 5146 0637

SES Loch Sport 5146 0263

SES Emergency 132500

Sale Police 51435000

Sale Hospital 5143 8600

Sale Shire Council 1300366244

Poisons Info 13 11 26

CHURCH SERVICES

Loch Sport Assembly of God

10:00am Every Sunday

Meeting in Public Hall.

Catholic Mass

10:00am Catholic Church

Mass 1st Tuesday

at Community Church

St Marks's Anglican &

Community Church

10:00am Services 2nd & 4th

Sunday

Good Friday 22nd April 12 noon

Easter Sunday 24th April 10:30am

ALL WELCOME



Loch Sport LINK

is available online

at

www.lochsport.org.au

The Kid's Club Program



The kids club program resumed on Feb 16th with all of the children having a ball making Hacky Sacks, Craft & Painting. The children have been thoroughly enjoying the range of activities that are on offer.

We have a fun filled program for the rest of the term with sports days, cooking afternoons & Easter egg painting.

I would like to take this opportunity to thank all of the Parents, Grand Parents & Community Members who have stayed for the afternoons to help out. Your help and ideas are much appreciated.

We will be having a Kids Club Holiday Program Mini Golf Tournament on Wednesday 20th April at 1.30pm. The cost is \$5.00 which includes 2 nuggets, chips and a drink. All the children – locals & holiday makers are most welcome. Bookings through the Community House by Tuesday 12th April is a must to secure your child's spot. Ph 5146 0145.

I look forward to seeing all of your smiling faces again in Term 2.

Beck Webb

International Women's Day



The 100th Anniversary of International Women's day was celebrated in Loch Sport with a luncheon at the Public Hall. 20 women attended from Loch Sport and Golden Beach; ages ranged from 4 -74years. We listened to two local speakers, Jill and Marlene tell of their different experiences of living in Loch Sport. An enjoyable time was had by all and we hope this will be an

inaugural event for our town.

Marg Desira

Market

The annual March Long Weekend Market was well attended and enjoyed by all.

Our next market will be held on 12th June. Please contact the office for more information or to book a stall.



Kane & Bianca Klein

Bollards

While walking along our wonderful foreshore I am sure you have all noticed that something exciting has appeared next to the children's playground in the Lake Street Lions Park.

The bollards are now taking shape with many parents coming along with their children to lend a hand. We have been excited at the artistic skills of some of the parents.

We have many people and organisations to thank and this will be done at the appropriate time. For now we thank everyone involved.

From this - to this!



Loch Sport Community House Inc.

Opening Hours

Monday, Tuesday & Friday
9:30am - 3:00pm

Fees and charges

Classes carry a \$3.00 activity charge
All House users are required to pay a \$2.00 annual membership fee.

Services available

Photocopying

A4 sheet - black	20c
- colour	30c
A3 sheet - black	60c
- colour	\$1.00



Internet

\$2.00 per hour

Emails

\$1.00 send/receive

Fax

\$1.00

Resumes/CV's

\$5.00



LSCH Inc. Programs

After School /Holiday Program

- Ancestry Group
- Art Group
- Awesome Foursome
- Book Club
- Calligraphy
- Chronic Pain - Self Management Group
- Computer Class
- Community Kitchen
- Craft Group
- Dance Club
- Exercise Group
- Quilting Group
- History Group
- Holiday Program
- Line Dancing
- Mobile Phone
- Movie Group
- Music Jam
- Swimming Group
- Tai Chi
- Walking for Fitness

	5		8		6		2	
	9	6	3			7	5	
		3	2	1	4	5		
1								4
		5	9	7	8	3		
	7	4	1		5	8	6	
	3		6		9		4	

Sudoku

A juvenile White-bellied Sea-Eagle's coming of age

At the edge of the lake an endless dance of water and sand hypnotises the soul, drawing us closer into eternity. Searching for juvenile Sea-Eagles, the day was dying in the everlasting spaces and it was impossible to tell whether the time was passing.

Drawing up to the first nest site, our boat pitched gently on the glassy lake with pale sky merging into a pearly expanse punctuated momentarily by a surfacing dolphin. We wanted to establish the exact time an immature eagle becomes self-sufficient, when parents would no longer have to feed them, and here, at nest site 1 the chance presented itself and the dolphins had to be disregarded. Nearing the shore the boat disturbed hundreds of black hard head ducks who flapped skyward in a single whirring mass above our heads. We turned the boat motor off and sat speechless in the silence. Hovering above the lagoon's sandy bottom, we could just make out the dim outlines of small mullet nearby the eagles' favourite food and beyond them, the dark amphitheatre of weed that surrounded us. The weather was perfect for optimum Sea-Eagle fishing.



Eating on the bank



Female eagle on the hunt

A light breeze of 5 knots now blew across the lake surface, causing tiny ripples, concealing the eagles' approach from surface fish. The juvenile Sea-Eagles, now all 21 weeks old had been entirely dependent on their parents until now and on many late summer boat jaunts, the still hot air had resonated with their screeching hunger cries which ascended out of tangled lake banks of melaleuca.

Watching juveniles learning to fish from our well-equipped boat, we had encountered a place of mystery and wonder. One languid afternoon, as the summer sun started to descend towards the horizon, marking the end of another glorious day, we witnessed a spectacular fishing incident, which we knew was surely exceptional.

With the immature from nest site 2, at 21 weeks, clearly visible on a lakeside perch tree and two adult Sea-Eagles circling overhead, dynamics changed when a fish that had ventured up to the water surface was spotted. The female eagle abruptly descended into the stoop from high above, advancing towards the fish at approx. 80 km per hour and lunged forward, talons wide open, striking the wretched mullet around its girth in one singular flowing motion.

The setting was entrancingly beautiful but far from silent, as the very hungry juvenile commenced to chase the adult carrying the 400g fish with cries approaching religious fervour. It was an unmistakably fretful cry of such intensity resonating across the lake and penetrating hundreds of metres into the surrounding forest. The methodology of adults with newly fledged young would be to carry the prey out of sight into back trees to feed them on the ground. It was very late in summer that we had witnessed the adults with prey taunting juveniles by wheeling low up and down over lake edge tree tops, trying to entice them out, we surmised and with the hungry juveniles in hot pursuit.

This time, as she sensed her offspring drawing near her, in mid air, the female Sea-Eagle opened her talons and purposely dropped the little dead mullet from 8 metres, letting it spin and spiral down to the waiting water. It was the juveniles queue – it was his chance but he didn't take it! We scrutinized transfixed as his meal plummeted, broke the surface water and sank. Sea-Eagles have several great survival advantages. The vital tasks of life – food foraging and reproduction are in

their DNA. They are born to fish; their huge ebony-coloured talons are able to lock onto prey in the roughest and most turbid of water surfaces. We could only suppose what the juvenile was thinking but we were too optimistic. He was not ready to fish.

Subsequent to his missed easy meal he continued to pursue both parents with loud cries but it would be only another 2 weeks before he would be able to apprehend fish in his delicate eco system himself.

In the first week of March, we saw 2 out of the 3 juveniles in the Park all out foraging for their own food. It was a gratifying sight. They were now 25 weeks old. Seagulls, young terns and cormorants flushed from the lake bank rose and the brown juvenile from nest site 1 emerged, swift, strong and stunning in a flurry of feathers, his talons vacuous. Immature Sea-Eagles do not appear to exhibit prey predilection and the raucous little bird colony clustered on the sand must have looked enticing and unproblematic. His now liberated parents were well out of sight, possibly foraging along 90 mile surf beach, taking advantage of days of high wind as the raptors are opportunistic feeders. The female juveniles now weigh approx 3.1 kg and soar through the air on wings of more than 2.2 metres across, but we were speculating about their foraging success as it is believed that at least 80% of all young Sea-Eagles die in their first year from starvation.

Sunset melts the tension of the completed day as the tea tree spires are lit in turn by the last rays of the dying sun. This days had been one of many protracted ones perusing juveniles and now as the light fades, sweat drips in rivulets over grimy noses. The lakes infect us with a passion to explore – an urgent desire to discover what comes next. We are never disappointed. Every bend reveals new opportunities to learn more about Sea-Eagles. The final setting of the day is so magnificent, with pale luminous water returning to glass; little fish skipping the surface, that we converse in whispers so as not to break the spell before the deafening outboard motor engulfs it all. It is a creation that breathes eternity.

Jenny and Ken Hodge

Jenny and Ken are in the process of completing a 10-year study of the white-bellied sea eagles of Gippsland. If you would like to chat to them about the eagles email: khodge07@bigpond.com

Rain

How unusual for us at this time of the year not to have been worrying about low tanks and dried up vegetation.

When we look on in horror at nature's destructive forces at home and around the world we realise how blessed we are.

Japanese Kelp

Joan sent me an article in **Coastline the Coast Action/CoastCare Newsletter**.

For many years Joan and friend Doreen monitored the changing sand levels at the Ninety Mile Beach. You may have noticed the rusting gauge still there.

The article she thought of interest to us was **HAVE YOU SEEN THIS SEAWEED AT YOUR BEACH?**



This Japanese kelp is a serious marine pest and has been found in Apollo Bay Harbour and it is important to report it. If you see an unusual kelp (seaweed) please report it. It has lots of pretty crinkly edges.

The south Gippsland Coast Care facilitator is:-

Bruce Atkin

Tel.03 5183 9116 Mob.0429 842 142

Email bruce.atkin@dse.vic.gov.au

Why is Easter So Late This Year?

In this commercialised world the changing dates of Easter are often seen as an inconvenience. But I find it wonderful to think that we are still keeping up a tradition rooted back to early human history when we lived lives governed by the seasonal changes of the Sun and the cycles of the Moon.

To our ancient northern hemisphere ancestors the Vernal (March 21st)

equinox when day and night are of equal length heralded the coming of spring after winter. From the dead looking brown leafless deciduous trees, green leaves sprouted and early grasses poked through the soil. And the full moon after this was considered a time of greatest fertility.

So the first full moon after the Spring Equinox became the festival of the goddess Oestra, a time of joyful celebration of new life and yearly renewal.

To the early Christian Church the symbolism of new life fitted the story of Christ's resurrection from death and so the ancient rite of spring became a Christian festival and along with it fertility symbols, for example our much loved Easter bunny which even our Australian horror rabbit story has not taken away.

And at this time when we have been made so aware that we, for all our sophisticated technology, are still the playthings of nature it is good to celebrate Easter as a moving feast governed by the heavens as it has been since ancient times.

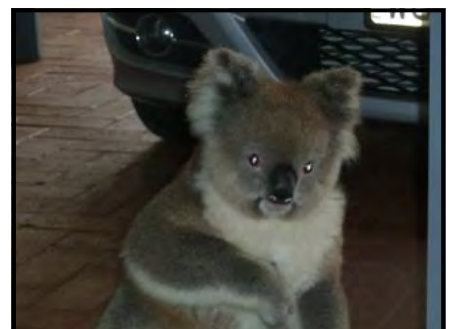
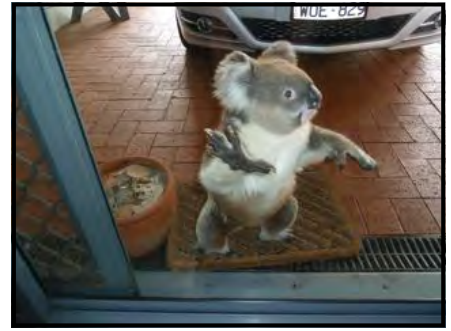
Beth

Surprise Visitor

While sitting relaxing after a morning bike ride, I heard an odd scratching sound coming from downstairs. On investigation and much to my surprise I saw a young, very healthy looking koala at the front door. I suspect it could see its reflection in the glass & thought it had found a mate. I grabbed the camera, but it was in no hurry to depart, so I captured a few good shots.

It stood on its hind legs nose pressed to the glass, & then climbed onto a pot plant & tried to climb up the edge of the screen door - not good for the mesh!! After about five minutes it ambled over the road & climbed up a tree & spent the rest of the day there. What an amazing experience that was for us - & maybe for the koala too?

Megan Cunliffe



Loch Sport Fishing Report

Most of the time the surf has had deep water, but more recently big swells washing up the beach have flattened out and widened the gutter, also they have brought in some weed. Unseasonable weather and cold winds have been a regular issue.

The usual species of fish including

large and small salmon, small flathead, mullet, tailor and gummies to about one metre have been caught, also an elephant fish. Results though, are not up to the usual standard for this time of season with smaller fish, and most fishers have only experienced an occasional good days fishing. *Helen*

Loch Sport History Group

Peter Medlings Complete Boating Services

For all your marine and
Paint work, Timber work,
Canvas covers, Electrical,
Outboard and Diesel repairs,
Boat detailing, Antifouling,
Boat Sales and Trailer hire.

Please call Peter on
0407 233 020

D & J HOME & HANDYMAN SERVICES



Mowing
Edging
Tree Pruning
Household Maintenance

Competitive Rates
Phone Derick & Judy
on
5146 0120

Non-Mains Water Concession 2010-2011

The Non-Mains Water Concessions assists card holders who are not connected to mains water with the costs of water usage.

The rebate is between \$98 - \$294 for 2010/2011.

Cardholders may apply for up to three rebates each financial year.

Please contact the L.S.C.H. office for forms and /or any further details.

Gold

Before the discovery of gold, Gippsland belonged to the pioneer pastoralists. The main effect of gold in Gippsland was to consolidate the patterns that had already developed, the speed but not the nature of this development was changed. Population increased in the gold-fields and generated an increase in imports through Port Albert, while pastoral and agricultural production continued to develop on the basis of growing market demands in Melbourne, on the central Victorian gold-fields, and in the northern Victorian gold-fields.

Gold finds within the study area were never spectacular. The first discovery occurred on the Nicholson River in 1854. During the 1850s the diggers concentrated on the alluvial fields along the Nicholson, Mitchell, Wentworth and Dargo Rivers, plus the Boggy and Iguana Creeks. Reef mining began along the Mitchell River and its tributaries in the 1860s. Towns such as Merrijig, Tabberabbera, Bullemwaal, Deptford, and Dargo developed and declined as the gold was worked out. From time to time new areas caused excitement such as Clifton Creek and Freestone Creek in 1868.

The search for gold led to an influx of people and an increase in trading activity. Most of the mining activity took place in the mountains away from the occupied plains. A network of rough tracks serviced these mining areas none of which survived as significant permanent settlements once the supply of gold was exhausted. Therefore the direct effects of gold discoveries were short-lived, but many

ex-miners remained to select land for agriculture, and became permanent settlers in the region.

Courtesy of V.E.A.C. Vic.gov.

The Boss of the Shearing Shed

When I was young, I used to roam,
for I was hard as nails;
I humped my swag along the track in
sunny New South Wales.
I followed all the dusty roads,
where'er my fancy led,
And that was how I came to meet the
boss of the shearing shed.

He made us work the whole day long
on a board all wet with slime,
And when I stopped to blow me nose,
he said I was wasting time!
So, I grabbed his prize merino ram,
and I slipped and cut its head,
And that was how I got the sack from
the boss of the shearing shed.

Then sadly I rolled up my swag and
started down the track,
And there I met a pretty girl,
a mounted on a hack;
I asked the lass who she might be,
and this is what she said,
"Why, Sir, I am the daughter of the
boss of the shearing shed!"

Well, soon I found I loved that girl,
and it was plain to see,
By the twinkle in her pretty eyes,
she'd took a shine to me!
One day, we wandered off to town,
and there we two were wed;
And now I am the son-in-law of the
boss of the shearing shed! *Anon*
A Collection of Australian Bush Verse
Courtesy Harper Collins Publishers

L.S. Community House Dance Club



Dancing has now commenced in earnest, please look for information around town with regard to the dates & times.

April 23rd BYO Shared Supper
Saturday Harmony Plus

May 21st BYO Shared Supper
Saturday Harmony Plus
June 24th BYO Shared Supper
Friday Russell & Adam
Entry - with a band - \$7.00
 - with tapes - \$5.00

Children accompanied by an adult free.

Easy ballroom dancing lessons are now held on Wednesday evenings commencing at 7:30pm. No need for a partner, come along and get individual attention and gain the confidence to go dancing.

Please ph 5146 0537 for conformation.

Thursday dancing - Revision

Dance with friendly people, with help when you need it.

Marj

Telling a Life Story



There is a saying that a photo tells a thousand words. This is especially so when photos are used at funeral services as part of the process of celebrating a life.

Why is this the case? Often the people attending the funeral have only known the deceased over recent years and may not appreciate the earlier parts of their life and the things that they were involved with and their achievements.

In particular, it is always moving to see the reactions of grandchildren or other young relatives in seeing that their grandparent was just as young and vibrant as they themselves are.

The stories told in the eulogy, when combined with the photos shown on the screens, are a powerful way of telling the life story to the gathered family and friends.

At Gippsland Funeral Services we recognised quickly the power of telling a life story through photos. We were one of the first funeral directors to install dual 50" plasma screens in the chapel and purchase projectors and screens for other venues to facilitate these presentations.

On top of this, we use a special program that does a lot more than just display the photo; our software is able to start with a group photo and pan and zoom to bring into focus the

person whose life is being celebrated. This is particularly useful with group photos, such as old school photos or sporting photos, where it can be quite difficult for those attending to work out which one the person is in the group.

Once the funeral is over, the Life Story Presentation DVD is returned to the family in a beautiful personalised cover. Multiple copies for other family members and friends are quickly and easily produced.

It is another way in which Gippsland Funeral Services facilitates the celebration of a life.

Scott Rosseth

Third Generation Funeral Director

Creating inspirational funerals

www.gippslandfuneralservices.com.au



**GIPPSLAND
FUNERAL
SERVICES**



Support Your Community Traders

Loch Sport Concrete Services

Lot 4, Progress Road
(Industrial Estate)
Loch Sport

Concrete Mini Mix - Gravel Supplied

Bob Cat excavation hire
Block Clearing & Slashed
Driveway Formed & Layed
Excavation for House Sites
Auger Boring

Telephone Jason on
Mobile 0428 460 588



L. A. Marshall

Member MBA 9354

Renovations
Alterations
Extensions
Decks
Carports
ETC

Campbell Street
Loch Sport

0412 530 612
0431 378 533

CONCRETING

A.J. Guest
Concreting Pty Ltd

For quality concreting,
specializing in garage floors,

colored concrete,

house slabs,

paving etc.

Phone Tony Guest
0418 328 526

RAY MANN QUALIFIED PAINTER & DECORATOR

Free quotes Reasonable rates
Fully insured
35 years trade experience



Mobile: 0418101132
Email: raymann3@bigpond.com

A & B SEPTIC TANK CLEANING

SEVEN (7) DAYS A WEEK

24 HOUR SERVICE

Freecall Andrew & Bronwyn Miller
1800 063 387

TELEPHONE (03) 5144 6524
MOBILE 0427 347 655

LAKESIDE DESIGN & SIGNS

Mob: 0418 349 250
Fax : (03) 5146 0112

- Kitchens & Bathroom Cabinets
- All types of Signage
- Banners
- Vinyl Lettering

E-Mail : lakesidesigns@iprimus.com.au



DHC ELECTRICAL

Mick Luke

For all your Electrical Needs

Underground power a specialty

Reg. No. 7669

404 Sanctuary Road
Loch Sport

Phone 5146 0641
Mobile 0438 460 641

John Evans

SALES • SERVICE, REPAIRS AND
INSTALLATIONS • PUMPS • VALVES
FITTINGS - POLY • BRASS
STAINLESS STEEL • PIPE - PVC • POLY

GPI
GIPPSLAND PUMPS
& IRRIGATION

112 York Street, Sale Vic 3850
Tel 03 5144 2000 Fax 5144 7400
Mob 0429 139 446



**Jill & Alan Hall's
MARINA HOTEL**

Telephone: (03) 5146 0666
BAR - BISTRO - BOTTLESHOP
Bistro open 7 days

A great place to enjoy a cold drink, a meal, a coffee and a fantastic view.
The Marina Hotel Courtesy Bus, is available to pick you up, and get you home safely.
Home deliveries available evenings & weekends including both meals & beverages
- minimum purchase \$20 plus \$4 delivery

Weekday Lunch time Specials are back! (see Gippsland Times)

Coming Attractions

Easter - Barrie Jessep (no cover charge)

Normie Rowe, Wendy Stapleton, or someone new; who do you want to see again ?

**LOCH SPORT
GENERAL STORE**

Licensed P.O.

with on-line EFTPOS

Hardware & Plumbing Supplies

LP & Auto Gas Supplies

Boat & Van Storage

Bait & Tackle

Telephone 5146 0300

**LOCH SPORT
GARDEN SUPPLIES AND
NURSERY**
66 - 68 SANCTUARY ROAD
5146 0513

For all your Gardening Needs
Plants, Fertilizers,
Plumbing & Timber Supplies,
Mulches, Gravels, Concrete Mix and
Screenings, Dry Firewood.

Open Daily
9:00am - 4:00pm

Closed Tuesday

MINI GOLF SANCTUARY CAFE
64 Sanctuary Road
5146 0422



Mini Golf, Video Hire, Take-a-way, Dine
in - B.Y.O. Liquor License
Milk, Bread, Groceries, Drinks etc

Opening Hours
Sun -Thursday 9:00am - 7.30pm
Frid-Sat-9:00am - 8:00pm
closed Tuesday

For all your Meat Requirements

GUTHRIDGE MEATS

**Graham & Denise
James, Proprietors**
Specialising in Bulk
Packs, BBQ Packs

Smallgoods made on the
premises

278 Dawson Street
Sale, 3850

PHONE & FAX ORDERS



FREE HOME DELIVERY - SALE AREA



Gary Gargan

Trading as SCENAR Victoria

. Dip Remedial Massage

. Scenar Therapist

. Relaxation and Hot Stones Massage

16 Anthony Court, Loch Sport VIC 3851

By Appointment Only

0428 432 243

scenarvictoria@dragnet.com.au



**THE LODGE
LICENSED
SUPERMARKET**

- ◆ Authorised Newsagency
- ◆ Licensed Loch Sport Dairy
- ◆ ANZ bank Agency & Eftpos
- ◆ Fresh Produce & Deli
- ◆ Grocery - Bait - Ice
- ◆ Fishing Rods & Equipment
- ◆ Licensed Bottle Shop
- ◆ DVD Hire

**We Welcome your business
Lake Street, Loch Sport**

Phone 5146 0353

Support Your Community Traders

ACTION TOSHIBA

OFFICE SHARP

MACHINES

Pty Ltd

**96 Raymond Street,
Sale, VIC, 3850**

Phone (03) 5144 1822

Classic Outboards

Outboard Motor Repairs
Mobile Marine Servicing
Over 20 Years Experience

Contact Peter Alexander
at the
Antique Marine
Engine Museum

5146 0697

Dahlsens

BUILDERS
ONE STOP SHOP FOR

- ◆ Timber
- ◆ Hardware
- ◆ Pre-Fab Walls
- ◆ Roof Trusses
- ◆ Plumbing
- ◆ Expert Service

**48 MACARTHUR ST SALE
PHONE 5144 2422**



Phone Laurie: 5979 8749 Mobile: 0425 703 985

**Laurie The
Tree King**

Tree & Stump Removal

Tree Lopping

All Work Fully Insured

sayers repairs
all mechanical work

kevin sayers
mechanic

1 government road
loch sport
3851
0419365423

kevin.sayers@hotmail.com
51460133



**Loch Sport
Boat Storage**

Individual lockable steel sheds
9m x 3m x 3.6m eaves
Rates starting at \$880 p.a.

24 hour access


Lot 8 Progress Road
Loch Sport

**Phone Brooke
0422 419 454**

**PETE'S
ODDS & ENDS**

Do you need a handy man?
No job too large or too small

- Tiling
- Painting
- Concreting
- Carpentry
- Paving
- Gardening



**ALL WORK
GUARANTEED**

**Peter Marshall
0434 574 701**

**SMITHYS BOBCAT
& EXCAVATOR HIRE**

- 5 Tonne Excavator
(Rubber Tracks)
- 4 in 1 Bobcat
- Foundations
- 6M Tipper
- Landscapes Formed
- Driveways Cut
- Licensed Operator
- Sites Cleared
- Fully Insured

GEOFFREY SMITH
TEL: 0419 361 268
0412 453 077

50-52 Carroll Street, Loch Sport



- ◆ Pest Control
- ◆ Termite Treatments
- ◆ Pre-Purchase Inspections

**“ One family, one goal
great service”**

1800815160



Russell Thomas Plumber

License No. 21433 ABN 19 320 416 038

SERVICING LOCH SPORT & SURROUNDING AREAS
OVER 25 YEARS EXPERIENCE
NO JOB TOO BIG OR SMALL

All WORK GUARANTEED

Specialising in

- ◆ New homes & Renovations
- ◆ Repairs & Maintenance
- ◆ Sewerage & Treatment Plants
- ◆ Hot water Systems
- ◆ Roofing & Spouting
- ◆ Gas Installation Only
- ◆ Drainage

PH: 0407 505 567

After Hours Tel: (03) 5146 0629

Fax: (03) 5146 0587

Email: russellt@vic.australis.com.au



Phone Brian 0418 360 540

After hours (03) 5978 7055

For A free Quote



AVON WATERTANK CLEANERS

Improve the quality of your water

- ◆ Clean Domestic Water Tanks
- ◆ Guttering
- ◆ Desludging Swimming Pools & Fish Ponds

Retain up to 5000 Gallons of your water

For Bookings & Enquiries Contact
Troy Schleifer - Mobile: 0428 451 969
1 Gooch Road, Stratford Vic. 3862
Phone: (03) 5145 6208

Chemical Free Vacuum & Pressure Cleaning Service

LOCH SPORT CARPET CLEANING

servicing Loch Sport for 10 years

Carpets Cleaned Dirt Cheap
Reasonable Rates ...

New Service - Tuesdays
or by arrangement
Drop your Carpet Squares or Mats off at
Depot before 10am
and pick up at 12 noon

For Prompt & Courteous Service

Phone 51460 999
Mobile: 0437 365 417



Certificate 11in Engineering
- Production (Air Conditioning)

AH: (03) 5146 0629

Fax: (03) 5146 0587



Email: russellt@vic.australis.com.au
Web: www.russellthomas.com.au

Do your trees need attention?

David and Merryn Stevenson

Are here to help!

Ph: 5148 0505

Call on us for:

- Safe prompt, reliable service Tree Loping and/or Removal
- Mulching/chipping of branches up to 5 inches
- Big Clean Up jobs in houses, sheds or gardens
- No obligation , free quotations

Features:

- Fully Licenced and Experienced Operator
- Knowledge of Native Vegetation Regulations
- \$5 Million Public Risk Insurance
- 12 Metre Cherry Picker
- Discounts for Aged Pensioners



H.V.B. Building & Construction P/L



Member M.B.A.
No. 2730
A.C.N. 059 877 023

Extensions, Renovations,
New Homes, Transportable Buildings

Hans Visser

P.O. Box 562, Loch Sport, Vic, 3851
Tel: (03) 5146 0452
Mobile: 0427 350 118

Exclusively Yours



Civil Marriage Celebrant
Mrs. Beverly Lynn

Ph: 03 51444440 Mob: 0412153424
Email: lynnbeverly04@yahoo.com.au



GRANT
The Silicon Man
ABN 61 177 477 822
0428 356 957

Architectural Corking
Broken Window Replacement
Pensioner Discount

Barry & Annette Lett
Funeral Directors

Care, Compassion
and Service with dignity
for the people of Gippsland

Prearranged and Prepaid
Funeral Plans available

Phone (03) 5143 1232
67 Macarthur Street Sale
24 Hour Personal Service



Want Amway?
then Phone
Dawn on 5146 0599
Prompt, reliable service guaranteed



Loch Sport Boat Club

Casual Sailing – every weekend call in Friday night to see who might be interested.

Coming events

Monday 4th April - Braemar College will be visiting for a Sailing Camp for 5 days.

Sat April 9th - Pulse Credit Union Loch Sport Lakes Sailing Challenge for trailer sailors a long distance day time yacht race starting at 10.30am for more info contact Commodore Peter 51460035 \$20 entry cash prizes up to \$100

Monday April 11 - Get Into Small Boat Sailing The LSBC will be conducting the popular Yachting Australia “Get Into Small Boat Sailing” course again 11th to 15th April 2011 Yachting Australia accredited instructors and club dinghies are provided. \$135 each person \$100 for club members, While involved in these classes students are covered by YA insurance. Classes fill quickly call now, enquiries phone Secretary on 5146 0938.

Easter Activities

Thursday 21st April - Children’s Disco Another disco for 6 to 12 year olds will be held from 6 – 8pm.

About 60 children have enjoyed the disco lights and dancing to the music with the old games of musical chairs, limbo and statues. \$5 entry. All receive a free soft drink packet of chips and glow stick on entry with prizes awarded for great dancing. Adult supervision no pass-outs, Ages 6 to 12 years only

Sunday 24th April - Pancake Breakfast - Pancake breakfast at 10am \$2 per plate

Sunday 24th - Boat & Equipment Sale at 10 am at the clubroom grounds.

The club will be selling items surplus to the needs of the club

Sunday 24th - BBQ

At 5 PM a BYO BBQ or meat packs available. Followed by

Sunday 24th - Film Night at 8pm a \$2 donation is required

LSBC Welcome To You

Loch Sport Boat Club Bar open on Friday nights from 6 pm every week and after each programmed event. A sign in the carpark will indicate when open at other times.

Visitors are always very welcome on Friday nights and to take part in club



Australian Red Cross Loch Sport Unit

Red Cross service group continues to be active and thanks all who supported the sausage sizzle at the market.

Trauma teddies continue to be made by a committed group of local residents. They are very much

activities.

New members are very welcome.

You can join our club, membership includes a silver card with Yachting Australia, which covers you with accident insurance while involved in club activities, members meet for tea/coffee Sun & Wed at 10am

Weather Cam

The Weather Cam has been a popular addition to the club with up to date weather information for club members and the boating public, at this stage it has had over 21,000 hits since July last year. If you haven’t checked it out go to www.loch-sport.net and select weather cam.

Report On The Poker Run On The Gippsland Lakes - Held On Saturday February 19th

The Loch Sport Poker Run day on Saturday 19th started with lots of wind and rain overnight continuing into the morning, some families still braved the elements to dress up the crew and the boat for the judging. The Adams family, Queen of Hearts and the Royals showed great imagination in their preparations. A slow start while waiting to see what the weather would do then the choice to venture out of doors and travel a short distance to pick up envelopes on land. First pickup was the shelter at the Lions Park then a visit to the Marina Hotel who sponsor our event each year. The sun came out and some put their boats in for a while till the wind became too strong.

Games at the Clubrooms at 1:00 were run by Gavin and Anna from Stratford with lots joining in. Third card picked up at the Lions Park again and back to the clubrooms for presentations and more games. Music started after 6 for entertainment with dinner, presentations and last card draw later. Best hand collected by Team 12 Chris Lester and crew with 2 red kings, 2nd best hand boat 14 Simon Keogh-Hogan and crew with a red and black king. 3rd best hand boat 7 Graeme Carey and crew Red and black tens. Other prizes included Quiz winners and first entry paid. The music kept going till 10 when a lot of exhausted people, including the organisers, headed for home.

appreciated by the children who receive them in times of trauma. Donations of 8ply yarn are gratefully accepted and can be dropped off at the Community House office.

Marj

Pastor Apollo Mijares, newly arrived with his wife, Cynthia and family, has already been busy in the area. Each Wednesday will find him helping out at Loch Sport Community Care. Ps Pol (Paul) is quickly learning the ropes and happily joins in with everything from unpacking goodies to mopping the floor at the end of the day as he prepares to take over the administration. Impressed by the quality of his volunteers, he is finding it easy to slip into the routine at the shop and enjoys having a quiet chat with clients.

Loch Sport Community Care is continuing to serve the community and now has a client base of more than 180 people. Each week 60 to 80 clients take advantage of the food bank and the coordinators have received some encouraging feedback.

For anyone who is unaware of how the system works, it is as simple as having a centrelink or repat card and \$7. (The \$7 amount is to cover overheads and some items not sourced from Vic Relief Food Bank). A tagged shopping bag is supplied at no extra cost - but if lost or left at home, a new one will cost \$1. The client can then browse the shelves and fill their bags. There are limits on some items to ensure that everyone gets a share. Whilst the emphasis is on staple food items there are also some cleaning, personal care and baby items as well as confectionery. All goods are subject to supply being available from Vic Relief Food Bank. Availability of some items has been affected by the floods in Victoria and interstate, but generally stocks have been good. The bakery also makes a \$2 loaf available to

Clients on a Wednesday, who present a voucher from Community Care and show their concession card.

Even if you do not require the services of Loch Sport Community Care, please feel free to stop by and see how it works. The shop at Frankie's Service Station is open each Wednesday between 9am and 12noon.

Pastor Pol and Cynthia are already looking after Loch Alive Christian Centre and would welcome you to church at 10am each Sunday.



Loch Sport Primary School

It was a smooth start to the year with all the students settling well into their classrooms. Currently we have 26 students, who have been working hard in the different subjects. Our two school captains are doing a wonderful job running our school assemblies and our Junior School Council has had two meetings to discuss issues concerning the students.

We have had a number of special events over this term.

The three to six students completed their last Tackers Sailing Day with all the students and teachers enjoying the experience. All the students showed excellent skills at handling their craft and were able to sail from the boat club to the Lion's Park without any boats capsizing. The standard of behaviour was excellent. A special thank you should be given to the Loch Sport Boat Club members for their help on the day. They did a fantastic job ensuring our students were safe and well looked after. The event was such a huge success that we are looking into making sailing a regular event in the calendar year.

On the 24th February the whole school participated in the Rural Schools Swimming Carnival, with Loch Sport coming sixth overall. It was pleasing to see the students really putting in an effort to compete and happy with the placing they received. Once again our students' were well behaved, and despite the late arrival home it was a

very successful day.

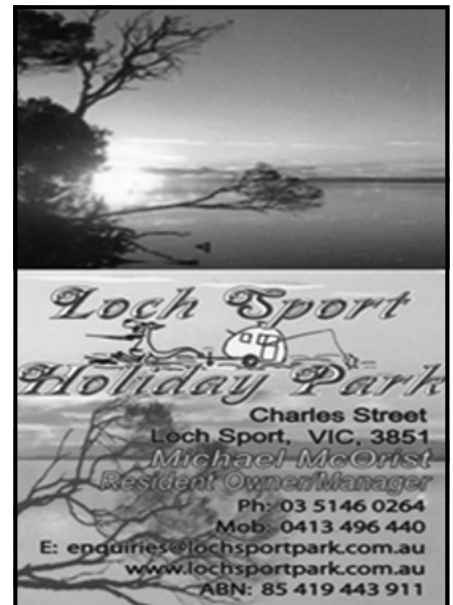
On 4th March the whole school walked down to the Boat Club to participate in the National Clean Up Australia Day. Our area was along the foreshore to the Lion's Club Park. All the students did a great job collecting rubbish and carrying it back to school. It was pleasing to see that there was not a lot to pick up. The students had a quick play at the park and all the students received an official certificate from Clean Up Australia.

We hope you have seen the new bollards that have been placed near the playground equipment at the Lion's Park. Our students have been doing a fantastic job decorating them into different characters. They are really starting to brighten up the area. A special thank you should be given to Marlene and Community House members for this terrific project.

In the last week of term the students will be participating in a Walkathon to raise money for children who need special walkers. The walkers are specially designed to fit on the child's legs and are very expensive to purchase. Loch Sport's Local Lions Club will be collecting all the money raised on the day to support these families in need. We hope we can raise a lot of money for them.

It has been an exciting term so far and next term should be just as good.

Peter Sanders
Acting Principal.



TANKFORMERS

Now Available in Loch Sport
at
Loch Sport Garden Supplies

Sizes: 1000 ltr to 2800 ltr

Phone 5146 0513

<http://www.tankformers.com.au>
email:sales@tankformers.com.au



Loch Sport R.S.L.

Opening Hours

1:00pm - Sun, Mon, Tues

12:00pm - Wed, Thu, Fri

11:00am - Sat

Bar Facilities & Courtesy Bus

Regular Activities Include

Monday, 7:30pm - Darts

2nd & 4th Tuesday 8:00pm - Karaoke

Wednesday 7:30pm - Carpet Bowls

Thursday 6:00 - 8:00pm - Members Draw

Saturday Bingo Eyes Down 1:00pm

Thursday & Saturday evenings - Raffles

Loch Sport R.S.L. Bistro

Meals - 6:00 - 8:00 pm

Thursday, Friday, Saturday nights

Bookings Preferred but not essential

TEL 5146 0841



Marina Beach

Accommodation

Modern Chalet Style Cabins

4 Available Sleep 6

1 min from beach, Marina & Hotel

Linen included

Fully self-contained

From \$65.00 Off Peak

(3 nights or more)

\$104.00 Holiday Period

PH: Loch Sport Marina

5146 0243

Loch Sport Holiday Rentals

Loch Sport Holiday Rentals
is the leading holiday
rental provider in the Loch Sport area

The sole role of
Loch Sport Holiday Rentals
is to provide holiday rental
properties in the Loch Sport area
which allows us to provide
the best service possible

Contact: Leanne Hartwig
E-Mail: lshr@netspace.net.au
Phone: 03 5146 0914
Fax: 03 5146 0914
Mobile: 0407 699 305

On behalf of the executive committee, I am happy to announce that we are united and in control of our Club in Loch Sport. We are viable and continue to progress slowly but surely. Without the participation of you the membership, we wouldn't be in such a position and strength.

Over the year, we've accomplished many things and have plans to work on the structure and make it more comfortable for you. We were given a task when we took over and I'm proud to tell you that our executive committee sits and plans what has to be done around the area and surrounds.

I'm pleased to report that we've purchased a new beer system which is the best available from CUB.

Things that we have accomplished year 2010.

- Purchased and replaced filters for the evaporative cooler;
- Bought a new glass washer;
- Painted inside and outside the building;
- Done gardening work around the area;
- The road leading to the R.S.L. has been sealed;
- Installed a new ceiling fan in the gaming room;
- Carpeted the bar area;
- Bought new chair and desk for our bar staff;
- Painted the walls in the band area;
- Purchased a new HD big television in the dining room;
- Installed new CCTV camera for security purposes;
- Enlarged outside rear car park;
- Replaced new door for wood heater;
- Replaced and repaired water pump;
- Replaced front windscreen and tires for the courtesy bus &
- Upgraded the electrical system in the kitchen.

These are but a few of the duties of the committee we attend to for your pleasure.

As you are aware, several R.S.L clubs have folded due to one reason or another. We are saddened to hear of one Club going under and if we could help, we would be the first in line to. We can only help ourselves at this point. We do it for you, the Members, and for the sake of the Integrity and respect of our fore father's history. They built this nation on their sacrifices, and we that are in charge, will endeavour to uphold their honour. Forever.

There are a few un-financial members and if there is a red spot on your letter, you are un-financial. Please become part of us and continue to assist us by paying your money.

Remember that the monies you pay,

stays in the community to enable us to continue the good work for you.

The R.S.L is a club and **nothing else**. We have dress codes that we have to adhere to. We ask our members that after six p.m.

No thongs or singlets will be allowed in our club. Please help us to keep up the standard and integrity of our Club or we will ask you politely to leave.

I would like to thank the sponsors and the kindness and generosity of our members. Several just want to donate items for auction, pictures, books, and other things that will help us gain some ground on what is required to maintain our Club. Truly grateful for those who have our R.S.L. at heart. What more can one say, but THANK YOU!!

The bistro will come under new management from the 9th of April. It will be called "*The Loch Sport R.S.L. Bistro*". The managers will be Duncan and Ronda Shaw. They will provide a new menu and specials to cater for your taste at reasonable prices.

We want to thank the Rainbow Retreat Bistro for their services over the past two years.

To those who have passed since our last newsletter, we honour them by remembering who they were and what they left behind. Their Legacy. "Lest We Forget".

Anzac Day will commence with a Gunfire Breakfast at the club starting at 8:30 A.M. The service will start at the foreshore by the flagpole commencing at 10:30 A.M. After the service, we all head back to the club for nibbles, refreshments, and a game of two up if the weather permits. Come and experience a special day with us.

Finally a big thanks to my hard working committee, and not forgetting the mighty work of the Women's Auxiliary. I need not have to mention their names, but rest assured that the dedication of them, the volunteers, do it for the love of the club and our community. That's what we love the most. To help those who need it. We take pride in doing what is required without prejudice.

We would like expressions of interest for casual/part-time work at the club. Any interested parties please call the club on 5146 0841. Ask for Janine or Lisa.

Till next time, thanks for your support and we will continue to give all we can. We are here for you and our Community.

Best Regards,

A.B Garcia
President



With the summer season behind us. The Loch Sport SES is now preparing for whatever may happen during the winter months.

The weather bureau is predicting a normal to possible wet winter, and Loch Sport being a flood prone area, the community of Loch Sport can be assured that all is ready with properly trained members.

A concern that has been raised with Loch Sport members is that the former Loch Sport SES unit members did not have the correct training or procedural knowledge for some emergencies eg: the correct procedures for sandbagging.

Sandbagging may look easy to the novice, but there is a definite art to it which involves working out a plan etc on how and where to build a barrier with sandbags, each sandbag must only be filled half way and placed like a brick wall.

The Loch Sport SES precinct is improving. The clean up & revamping is now nearly completed.

The training schedule for the next few months is nearly finalized with many different training courses coming up.

All the equipment, pumps and generators etc have all had the necessary maintenance work done & all are in top condition.

The new storm trailer is fully equipped & ready to go.

Loch Sport members have been travelling to Maffra SES Unit for training. This has been of great benefit to the Loch Sport Members & the members are really enjoying this.

We have gained another member. More members are still needed, both ladies & gentlemen are welcome. The unit meets for training each Tuesday at 7pm (19.00Hours).

Please contact

Gordon – Controller – 0428.888.312

or Helen – Deputy Controller –

0448.323.100 if you are interested in becoming a member.

If you require the assistance of the SES at any time please call 132 500



Barge putting down pipes for new rig



Pre causeway

Loch Sport Tennis Club

We have a small band of loyal players who continue to turn up on Sundays; unfortunately some of our members are currently away or on the sick list.

When everyone is back on deck it will be Thursday's & Sunday's as always & the monthly B.B.Q which is still very popular with club members.

A big "thank you" goes to the

Angling club who have been having a good old clean up around the club rooms, "thanks fellows" a job well done.

Please remember, everyone is always welcome to come along and join in for a hit & giggle on Thursdays and Sundays.

R Hampson



1st bridge under construction

Loch Sport Bowling Club Inc.

The club has been going along quite well with the patronage of club members on Wednesday's & Sunday's.

A team went to Wurruk to take part in their President's day a few weeks ago and didn't disgrace themselves.

Thanks to Fred Jen, Phil Stevens, R Hampson, & C Bruce.

One of our club members have been away on a boat cruise, we welcome Dianne home.

Bare foot bowls of a Friday night has been well patronized; thanks to all for

supporting the event.

With another bowling season coming to an end a vote of thanks goes to the committee for all their hard work. We also give a vote of thanks to our members for supporting the club during the season.

The Club will be holding its A.G.M on April 6th. All club members are encouraged to have their nomination forms in this week please.

*R. Hampson
Secretary*



Today's renovations above & below

The Loch Sport Causeway

After hearing numerous thoughts and theories bandied about we went to the Wellington Shire to find out the real reason behind the upgrade on the Ninety Mile causeway. The official response was that the bridge was due for an upgrade due to the narrow bridge

The CRG Community plan raised the issue of pedestrian Safety. In February

2009 Alan Lewis surveyed & prepared a Loch Sport Shared Path Implementation Strategy for the CRG, this revealed a safety issue with the causeway in regard to pedestrians. One of the report recommendations was "Construction of a shared path across the causeway to the Ninety Mile Beach.





Loch Sport Lions Club

March has been a busy month for the club.

During this time we were:-

- **Bowled Over** when we joined the Bowls Club for a twilight game.

Although most were inexperienced bowlers some showed hidden talents while others were quite unbiased!

However all had fun and enjoyed the delicious B.B.Q. provided by the bowls' club. This is part of an ongoing program by our club to develop links with other groups in town and is without doubt of mutual benefit.

- **Cleaned up** when we took to the road to collect the rubbish jettisoned along the way into town. Have you noticed the Adopt a Highway signs? It was pleasing to see that there was a reduction in the amount although chairs and tables were an odd thing to find and the passing motorist who threw out a packet with "here's something more" was not really funny. We finished with a Sausage sizzle because we believe in work and fun.

- **Walked Out** when we walked FOR AN AUSSIE KID to raise funds for the HART WALKER. This Walkathon was well supported Thank you to all those who joined in and to the clubs who made generous donations.

The participation of the Primary School students in their own special Walkathon was is very much appreciated. It is so important from an early age to recognise how fortunate we are to be able to walk, run and play.

- **Partied In** when we hosted the annual visit of District Governor Shirley at a special dinner. It is always fun to have guests and a good excuse to have a feast. D.G. Shirley inducted New Lions Joan and Lance and gave an inspiring talk.

Aprils Arriving (Is someone gobbling up the months these days!)

- **Having Fun & Frolics** at the annual **Easter Festival** held on the Lake Victoria foreshore on **Easter Saturday**. Come along and enjoy - lots of stalls;

- the Lions' great food and drinks in the Lions' Pavilion;
- children's races;
- gumboot and hand bag throwing
- more, more & more.

For More Information -

ph Lion Mick Crumpton 5146 0555

Now after doing all that its time to

Get Lucky:-

- at the **Lions Bingo** held at the Public Hall each Wednesday. Eyes down at 1.00 p.m.

Each week another club joins with the Lions and shares the profits so this is an important community strengthening event. Do support it.

- at the **Lucky Envelopes at the Marina Hotel**. Jill and Alan Hall are very supportive of the town and we appreciate this.

- at the **Raffle for the flood relief** for the people of Tully.

Lion Joan who was a former resident of Tully donated this most attractive painting. Be in it and maybe win it!

Remember all money raised from the community goes back to community projects some small and others world wide but all to help people who most need it.

All administration costs are borne by club members. **Lions is a service club.** Maybe it is for you!

For more information or an invitation to come along and see what we do with no obligation at all to join contact

Lion Noeleen 5146 0026 or ask any lion you encounter roaring around town !

*Beth
Lions Noeleen & Ralph with District Governor Shirley welcome new lions
Joan & Lance.*



**LOCH SPORT
CLEANING &
GARDENING
SERVICES**

PO Box 214
Loch Sport VIC 3851
Telephone 5146 0919

jimandmaryclottin@aapt.net.au


0429 384 767 **Jim**
0447 384 767 **Mary**


Pulse Pharmacy Sale
Shop 3 398 - 424 Raymond Street
Sale, Victoria 3850
Ph: (03) 5144 7447
Fax: (03) 5144 7329

Providing you with all your
Prescription, Medication, Vitamin
and Baby ware needs.

**Free Delivery Service
to Loch Sport**

With a friendly Pharmacist
always available for your
health needs and enquiries.

Sale Medical Imaging


4/396 Raymond Street, Sale
Specializing available via Sporting Legends Capsules

*** Bulk Billing (all eligible items)**

- X-ray
- OPG
- Ultrasound
- Bone Density
- Echocardiography

Ph: 5144 4909 Fax: 5144 4304
www.salemedicalimaging.com.au



Post Office Gallery Loch Sport

The Post Office Gallery Loch Sport has now been opened for a successful twelve months. Many thanks to the volunteers who have minded the Gallery, particularly through the extended period over the summer holidays.

We welcome local crafts/artists of Loch Sport to sell their work through

the Gallery with no commission being charged. Consider also being a volunteer as more are needed to man the Gallery over the coming weekends.

Please contact:-

Dinah Barton or Lisa Timms Gallery Management. 0425 762 277

Dinah Barton and Lisa Timms



Neighbourhood Watch Wel -1



Change of meeting day

Loch Sport NHW now meets on the second Wednesday of the month, at 1.30pm, at the Community Health Centre (opposite Frankie's). A police officer will attend our next meeting, on Wednesday April 13, to bring us up to date about the appointment of a full-time police officer and the new police station. All welcome.

It was necessary to change our meeting day from Tuesday to Wednesday because no-one was prepared to step in as area coordinator and I am no longer available on Tuesdays. Apologies for any inconvenience. Perhaps the change will enable those not usually available on Tuesdays to attend the meetings. There is a great exchange of information about community matters and a good mix of people so the discussion is lively and interesting. Do come along..... your support is appreciated.

Christmas Day

Those who don't wish to travel for Christmas have no options in Loch Sport as there are no venues or takeaways open. On Christmas Day 2010 the only food outlet open in Sale was KFC, and the only sit-down meal available was at the art gallery cafe. Television news showed community meals underway in parts of Melbourne and the idea took hold, so this coming Christmas NHW will host a Christmas Dinner, on the day, at the Community Hall. The cost will be minimal (\$12)

for a traditional roast meal, pudding and good company, and the aim is to involve those who are normally alone (singles and couples - adults only) so there will be no table or group bookings. No alcohol allowed.

The idea has taken hold and is receiving a lot of support, especially from Loch Sport Community House. At this stage there is no limit on numbers, but if there is a big response we might have to set a limit so book early. Please register your name and make your payment at the Loch Sport Community House office (open 9.30am to 3pm Monday, Tuesday and Friday at the hall). If you want to know more you are very welcome to come along to our NHW meetings.

Neighbour Day

March 27 was Neighbour Day, an event now celebrated worldwide to ensure that nobody is left alone and isolated. Although this date has passed, NHW Victoria is urging people everywhere to:

- Say G'day to your neighbours;
- Make a special effort to introduce yourself to older residents in your street and anyone who lives alone;
- Leave your mobile and home telephone number for use in an emergency;
- Agree to keep in contact.

*Lisa Timms,
Area Coordinator,
NHW Loch Sport.*



LOCH SPORT FISH & CHIPS

9 Cliff St - Ph 5146 0606

Take Away Order

Open: 11:00am - 8:30pm Mon - Sun

All Public Holidays 11am-

9pm

Closed Wednesdays

Flake (fried or grilled)	\$5.50
Snapper Fillet (fried or grilled)	\$6.50
Whiting (fried)	\$5.50
Flat Head Tails (fried)	\$2.50
Barramundi (fried or grilled)	\$6.90
Chips (minimum serve)	\$3.00
Potato Cakes (home made)	\$1.00
Dim Sims (fried or steamed)	\$1.00
S.M. Dim Sim (fried or steamed)	\$2.00
Home made Spring Rolls	\$1.70
Real Calamari Rings	\$1.00
Seafood Sticks	\$1.50
Prawn Cutlet	\$1.50
Fried Battered Onion Rings	\$0.50c
Scallop	\$1.50
Grilled Whole Garlic Prawns on Bed of Lettuce (12)	\$9.50
Grilled Shelled Garlic Prawns with Fetta	\$9.50
Grilled Scallops with Fettuccine, Pecorino Cheese & Basil Sauce	\$9.50
Home Made Real Beef Burgers (the lot)	\$6.80
Home Made Holiday Tower Burger	\$8.50
Porterhouse Steak Roll	\$8.50
Egg & Bacon Roll	\$4.60
Souvlaki (lamb or chicken)	\$8.50
Fried Hot Dog in Batter	\$2.50
Fried Chicken Devil Wings	\$1.80
Large Fried Chicken	\$1.80
Garlic Balls	
Chip Filled Roll (sae/chicken salt)	\$2.50
Pineapple or Apple Fritter	\$1.00
Banana Fritter	\$1.50
Fried Mars Bar, Chunky Kit Kat or Snickers)	\$3.50
500ml Premium Ice Cream	\$5.00
Tartar/Tomato Sauce	\$ 50c



Loch Sport Police Report

Leading Senior Constable Peter LOCH was appointed recently to Loch Sport Police Station.

LSC LOCH begins his duties in the Loch Sport area on 28th March.

The latest schedule for the building of the new Police Station was for

completion of works by the end of July this year.

The police member will be operating from the Parks Office until completion of the new facility.

*Dave DOUGLAS
Senior Constable*



Nomad Computer Solutions

Repairs, Upgrades, Installations

Geoff Vennells

Ph 0409 026 265

Email: vennells@optusnet.com.au



Loch Sport Fire Brigade

As I have stated in earlier articles of the link - A very big thank you to all of you, the generous public, for your kind donations of goods to our Op Shop.

As all can see, our building project is coming to an end with members of the brigade currently in the process of finishing the minor touches.

Operationally, the brigade has been quiet in the past month or so which is good. Recently fire restrictions were lifted in the Wellington Shire.

Please remember that, due to a council bylaw, no burning off is allowed without council permission.

The town is still reasonably dry so care should still be taken. A timely reminder, please remember to change your smoke alarm batteries when day light saving ends. The life of you and your family could depend on the detector working.

*Thank you
Captain & Members
Loch Sport Fire Brigade*



Pet Minders

We will provide pet minding services for your animals while your away.

\$10.00 per day will include feeding & a walk for dogs, half hour duration.

Call Marg on Ph: 5146.0219



**Receive \$500 for
Education Costs**



Do you have a child at school or about to start, you may be eligible to earn \$500 to assist with education costs.

Berry Street still has places available in the 2010 Saver Plus Program which runs for 10 months.

**IF YOU OR YOUR PARTNER?
Have a child attending primary or
secondary school?
Have a health care card or
pension card?
Have some form of paid
employment?**

YOU may be eligible to receive
\$1 for every \$1 you save
up to a
maximum of \$500

*(Funds can be used for
educational expenses such as;
camps, books, uniforms, musical
instruments, computers,
compulsory fees, tuition etc.)*

To find out more about this exciting
program contact; **Clare Adams** on
5144 9339 or **0408 132 044**



**Need a labourer??
then
call Ben
on**

**0419 815 182
No job too small**



Aspired Living
Make it your home

**House and Land
Packages in Loch Sport**

Starting at **\$179,990**
Design your own home on
your block of land.
Contact: Brook on
0422 419 454

Wellington Shire Council Draft
Community Consultation Strategy and
draft revisions of Local Laws 2,3,4 and
5 will be available for public comment
from 20 April to 11 May 2011.

Consultation:

The Community Consultation Strategy
is designed to give all residents
opportunities to have their say in
guiding Council's plans, activities and
actions into the future.

Over time, better consultation will
lead to Council and community
working together to create a Wellington
that reflects the community's
expectations.

'Consultation' simply means
opportunities to engage, seek
information and participate in decision
making processes with Council
officers.

After a comprehensive survey asking
residents how, what, when and why
they want Council to consult, the
information was collated and
considered. This information formed
the basis of the draft strategy.

We invite you to read the draft,
consider whether you believe the
Community Consultation Strategy
will guide Council to meet your
consultation needs, then report your
opinions back to Council.

Local Laws:

Local Laws are the behind the scenes
mechanism that ensures our community
runs smoothly and safely.

Most of the time people are oblivious
to the existence of Local Laws which
is a good indication they are working
well; It means people are living in
harmony, and the activities being
pursued by other community members
are not posing a threat to their peace of
mind, health or safety.

Local Laws shape our community
by establishing rules for what we can
and cannot do, and create boundaries
for where selected activities can occur.

Drafts of Local Law No. 2, Streets
and Roads; Local Law No. 3,
Municipal Places; Local Law No. 4,
Environment; and Local Law No. 5,
Livestock, aim to achieve higher
standards of community safety and
amenity while remaining abreast of
community expectations and priorities.

Community Impact Statements have
also been developed for each Local
Law to seek to improve consistency,
clarity and transparency for those
affected by Local Laws, including
businesses and community members.

The draft Community Consultation
Strategy and revised Local Laws
documents will be available from 20

April 2011 at the following locations:

- Under the What's New section of the Wellington Shire Council website;
- Council service centres in Sale & Yarram;
- Council libraries in Heyfield, Rosedale, Maffra and Stratford
- Alberton, Cowwarr, Tinamba, Newry, Dargo and Licola General Stores;
- Port Albert & Woodside Service Stations;
- Seaspray, Loch Sport and Briagolong Post offices;
- Golden Beach Foodarama and Loch Sport Supermarket.

Council looks forward to receiving
your feedback via email, written
correspondence or alternatively you
may wish to speak to Council's project
staff.

For Local Laws Review feedback
please contact: Carly Bloomfield on
5142 3457 or by email at

Carly.Bloomfield@wellington.vic.gov.au

For Community Consultation Strategy
feedback please contact:

Lauren Maxwell on 5142 3462 or by
email at Lauren.Maxwell@wellington.vic.gov.au

Sustainability Strategy Workshops

*L.S. Public Hall Tuesday 29th March
11:00am - 2:00pm*

Wellington Shire Council is developing
an Environmental Sustainability
Strategy and we need your help to
identify what we can do, coordinate,
support and influence across the
Wellington Shire to improve
sustainability.

Residents and representatives from
community, business, industry and
government are invited to participate in
Stakeholder Workshops across the
Shire and contribute ideas and opinions
to inform the Strategy. The views of
young people are especially welcome,
as the decisions and actions taken now
will affect your future the most. Each
workshop will be professionally
facilitated and includes a light meal.

The Strategy will focus on the natural
environment, water efficiency and
management, energy efficiency and
greenhouse gas reduction, resource
efficiency and waste minimisation,
planning and sustainable transport, and
adapting to climate change. Please
RSVP for catering purposes (and
dietary preferences) by email to
sustainability@wellington.vic.gov.au
or phone our customer service centre on
1300 366 244.

For more information please ask to
speak with Jo Caminiti, Coordinator
Sustainability.

FOB REAL ESTATE LOCH SPORT



**NEW HOUSE & LAND PACKAGES
By Aspired Living**

Completed homes ready to move into including plans, permits, colour bond roof, aluminium windows, double glazed windows, solar hot water, kitchen with oven & hotplate, fully painted, ready to move into.

2 bedrooms from \$155,000 both house & land

3 bedrooms from \$179,000 both house & land

LAND FOR SALE from \$45,000

ESTABLISHED HOMES with a large selection of 2 bedroom beach cottages to luxury waterfront homes.

See all our properties on www.foblochsport.com

03 51 460 933

54 LAKE STREET LOCH SPORT

Community News - What's on

**Golden Beach
Community Visitor
Information Centre & Broadband
Internet For Seniors Kiosk
is now open
at the
Golden Beach
Community Hall
PH: 5146 3447**

Art By The Sea Exhibition

Golden Beach Gallery
28th & 29th May 2011
Gold Coin Donation
Wine & Cheese Tasting
ph 5146 3447 for details



Sale Library School Holiday Program

Autumn themed stories, game and craft activity. Come along for some free holiday fun.

Wednesday 20 April
11.00am at Sale Library,
75 Macalister Street
Sessions at no charge.

Suitable for primary school aged children.

Enquiries: Wellington Shire Library,
5142 3368



LOCH SPORT



HEALTH CENTRE COMMITTEE

Monday, 16th May 2011
1:00 - 2:00pm

at the Loch Sport

Community Health Centre

Interested members of the Loch Sport community are invited to attend the Health Centre Committee meeting. The meeting is an opportunity for you to raise and discuss any matters relating to the health service with Central Gippsland Health Service representatives. We look forward to your participation.

For further information please contact the Centre on 5146 0349 or Ruth Churchill on 5143 8800.

WANTED TO SELL
Round Extendable Pine Table & 4
Chairs (Beige Cushions)
Excellent Condition
Ph 0089 5146 0089



WANTED TO BUY
1963 XL Falcon Sedan



Prefer Blue with white roof
in good condition and Auto
Call Peter on 0419 339 832

Learn how to **start**
and **grow** your business

SMALL BUSINESS VICTORIA



energise enterprise
VICTORIA'S SMALL BUSINESS FESTIVAL

Small Business Victoria presents
Energise Enterprise - Victoria's
annual Small Business Festival.
1-31 August 2010.

OVER 350 EVENTS held across
Victoria including workshops,
expos, seminars and networking
sessions.

> Discover opportunities and be
inspired to improve your small
business skills.

> Find out how to prepare your
small business for the
recovery.

> **WIN 1 of 3 iPads!** - Enter the
draw by registering online.

Order your FREE 48 page Event Guide or access event bookings at
www.business.vic.gov.au/energise or call **13 22 15**

Sponsored by



DEPARTMENT OF
INNOVATION, INDUSTRY AND
REGIONAL DEVELOPMENT



Getting Married? - Think Loch Sport

Loch Sport has been the venue for a couple of weddings over the past months. We wish both couples all the best for their futures together.

Candy Kitto and Will Satur were married on the Ninety Mile Beach; the bride arriving by pedal powered rickshaw followed by their reception at the Loch Sport Public Hall.



Katheryn Jones and Josh Marland were married on the beach in front of the Loch Sport Boat Club; followed by their reception inside the club. Katheryn and her bridesmaids arrived at the wedding by yacht.

Calendar of events

Volume 14 Issue 2
Page 21

	EVERY MONDAY		1st MONDAY
10: 00am	C.H.C. Tai Chi - C.H.C.		C.H.C. Support Group meet at Mini Golf
1:15pm	L.S.L.B.C. Carpet Bowls Names in by 12:15pm All welcome	1:00pm	L.S.C.H. Book Club Venues in town
		6:00pm	
1:30pm	L.S.C.H. Exercise Class L.S.P.H.	10:00am	2nd MONDAY L.S.C.H. General Meeting L.S.P.H.
7:30pm	R.S.L. Darts	10:30am	3rd MONDAY L.S.S. Citizens - L.S.P.H. See notices at the Lodge, P. O. & Bakery for details of Club activities
	EVERY TUESDAY		R.S.L. Women's Auxiliary General Meeting
9:30am	L.S.C.H. Craft - L.S.P.H.	2:00pm	
10:30am - 1:00pm	Mobile library		1st TUESDAY
2:00pm - 4:30pm	“ “	10:00am	Mass - C.C. All welcome
12:00	L.S.C.H. Ancestry Class L.S.P.H.	10:30am	A.R.C.L.S.U - L.S.P.H.
	EVERY WEDNESDAY	3:00pm	C.R.G. - L.S.P.H. All welcome
9:00am	L.S.C.H. Swimming in Sale		2nd TUESDAY
9:30am	Fellowship & Bible Study All denominations welcome Private Venues—ph. 5146 0795	10.00am	A.V.L.S.& D.A.A. - A.S. February to December L.C of L.S. - L.S.P.H.
		7:30pm	
9:30am	L.S.G.C. - all players with ALGU/AGU handicaps are most welcome 18 hole & 9 hole comps Bar service available	7:00pm	4th TUESDAY L.C. of L.S. - L.S.P.H.
			1st & 3rd WEDNESDAY
12.30pm	L.S.L.B.C. Names by 12:15pm All welcome	10:00am	L.S.L.B.C. Jackpot Bowls Book in by 9.30am. All welcome
1:00pm	Lions Bingo - L.S.P.H. 1:00pm eyes down	1:30pm	2nd WEDNESDAY N.H.W. (Wel 1) - C.H.C. We welcome all our neighbours
3:00pm	L.S.C.H. After school Program L.S.P.H.	7.30pm	1st & 2nd & 3rd WEDNESDAY R.S.L Carpet Bowls
7:00pm	L.S.C.H. Quilting Class L.S.P.H.	7.30pm	LAST WEDNESDAY R.S.L. Karaoke
	EVERY THURSDAY		SATURDAY FORTNIGHTLY
9-00am-Noon	L.S.T.C. Tennis Club	8:00pm	L.S.C.H. Dances - L.S.P.H.
10:30am - 1:00pm	Mobile library		3rd SUNDAY
2:00pm - 4:30pm	“ “	1:00pm	Housie, R.A.V.L.S. & D. Aux. - L.S.P.H.
1:15pm	L.S.C.H. social dance & dance classes - L.S.P.H. “cuppa & chat”		2nd TUESDAY BI-MONTHLY C.H.H.C. - C.H.C. See advertisement for details All welcome
6:00pm	R.S.L. Happy Hour Members Draw & Raffles		
6:00pm - 8pm	R.S.L. Meals		LEGEND
	EVERY FRIDAY	A.V.L.S.&D.A.A.	Ambulance Victoria Loch Sport and District Ambulance Auxiliary
12:00-Noon	L.S.C.H Art Group L.S.P.H.	A.R.C.L.S.U	Australian Red Cross Victoria Loch Sport Unit
6:00pm - 8pm	R.S.L. Meals & Social	A.S.	Ambulance Station
4.00pm - 8pm	L.S.L.B.C Barefoot Bowls	C.C.	Community Church
	EVERY SATURDAY	C.H.C.	Community Health Centre
9.00am	L.S.C.H. Swimming Group	C.H.C.C.	Community Health Centre Committee
9.30am	L.S.G.C. – all players with handicaps are most welcome 18 hole & 9 hole comps. Bar service	C.R.G.	Community Representative Group
		L.S.B.C.	Loch Sport Boat Club Inc.
1.00pm	R.S.L. Bingo	L.S.L.B.C.	Loch Sport Lawn Bowls Club
1.30pm	L.S.B.C. Social Bowls	L.S.C.C.	Loch Sport St Marks & Community Church
6.00pm - 8pm	R.S.L. Meals & Social	L.S.C.H.	Loch Sport Community House Inc
	EVERY SUNDAY	L.S.F.B.	Loch Sport Fire Brigade
9:00am - 1:00pm	L.S.F.B. Garage Sale 5146 0967	L.S.G.C.	Loch Sport Golf Club
9:30am - 1:00pm	L.S.T.C. relaxed social tennis All welcome	L.C. of L.S.	Lions Club of Loch Sport
		L.S.P.H.	Loch Sport Public Hall
12:30pm	L.S.L.B.C. Names by 12:15pm All welcome	L.S. S. Citz.	Loch Sport Senior Citizens
		L.S.T.C.	Loch Sport Tennis Club
		N.H.W.	Neighbourhood Watch
		R.S.L.	Returned Services League



ARIES March 21- April 20

Colour: Green Day: Wednesday
Racing: 1,4,8,5, Lotto: 12,13,18,25,32,45,

Surprise visitors and news coming up. Many may experience a new romantic attachment. A very busy period with lots of fun. You may be interested in something new; something that could improve your mind or body. People might put much in your way but just do what you want; pleasing yourself is the best thing in the long run. Some luck with Libra. Good period for personal relationships; many will meet someone special which may become a permanent arrangement. Busy time; you may forget to relax; take it easy make sure you enjoy yourself and get some rest. Major life changes for some, even a move or long distance travel. A time for gambling with your extra cash, don't leave yourself short; something might turn out to be more costly than you expected.



TAURUS April 21- May 20

Colour: Blue Day: Thursday
Racing: 8,5,2,5, Lotto: 1,18,19,23,37,44,

Many Taureans are planning weddings/engagement parties. Business & financial matters - luck plays a big part; taking the right hint is important. Busy social scene with many new people to meet. People will be looking for your company but keep an eye for bargains that will turn out to be anything but. Not a good time to start anything with someone else. Its time to change a few things around you and seek out new and interesting venues for your creative abilities. There should be someone who could bring you in contact with people in the field you are interested in. Not a good time to ask for favours as something is not as it seems around you. Keep your ideas till later when you will be sure of favourable treatment. Curb the urge to spend, as you could need your cash soon.



GEMINI May 21 - June 21

Colour: Yellow Day: Friday
Racing: 1,5,8,3, Lotto: 6,9,18,24,22,45,

Great for romantic interludes or holidays with loved ones. Many invitations ensure your not alone for long. Finances are highlighted for successful conclusions and more on their way. Don't enter new deals at the moment. Those people close to you need attention; you may have been too busy lately to notice. If things aren't going smoothly - persist. You may need extra energy to finish off plans but don't forget to get some relaxation also. Happy reunion is possible. Make sure you are looking after your health, as this is a period when many things could go wrong. Getting upset over trifles is another you should be weary of.



CANCER June 22 - July 22

Colour: Lilac Day: Friday
Racing: 13,5,2,1, Lotto: 12,18,24,35,33,

Good planning is essential to get ventures off the ground; success may be a while. Improvement in home situation brings peace of mind. Friends will help when needed. Busy with new things to do. Someone special may help sort out financial problems; luck may play a part. Success needs planning; you should take your time. Some family matters should also come up for review so ensure you have time for everything you regard as important. Many of the decisions made during this period could have a long range bearing on your future. If you have trouble with your personal relationships this could mean some changes are over due. Some surprise could come up in your work or interests area.



LEO July 23- August 22

Colour: Mauve Day: Tuesday
Racing: 5,4,8,4, Lotto: 15,19,25,40,36,23,

Lucky times re real estate dealings and new home purchases. Domestic matters successful with people interested in your ideas; therefore increased income. Some communication problems from a distance; ensure you get all your entitled to. Improvement in domestic situation; happy times. New career plans are about to be realized and some problems in the past could be solved. People from a distance could let you know about their future plans very soon. There could be some setbacks in your health matters but your perseverance will help you to put things back together again. People close by could find it difficult to understand you.



VIRGO August 23- September 23

Colour: Green Day: Friday
Racing: 1,5,7,4, Lotto: 10,45,14,126,33,

Someone you have been helping for some time will now pay off handsomely. Do not listen to gossip only believe what you know is true. You could be busy doing some extra work soon. A period of happy feelings and successful transactions in your career matters. Keep away from irritating people and you will keep the good feelings throughout the period. Travel could be in the cards again very soon, something to do with your career matters this time. Visitors that are not the usual sort of people could suddenly turn up. Something you have been waiting for a long time should now be very near. For your usual recreational period you could be coming up with something completely different.



LIBRA September 24 - October 23

Colour: Blue Day: Friday
Racing: 1,5,8,7, Lotto: 15,19,24,28,34,45,

Your few problems should be solved soon. If travelling take care of all final arrangements in time. This could be the period in which you meet the one and only but do not rush into anything permanent. Some improvements in your career matters and more time for a new hobby. This could be a time of learning something new and different. A new beginning also in your personal affairs that could be more serious than you think at first. Some luck with games of chance. It could turn out to be your problem to sort out other people's worries at your place of work. Keep away from explosive situations as you could be blamed if things go wrong.



SCORPIO October 24- November 2

Colour: Green Day: Wednesday
Racing: 1,5,7,4, Lotto: 15,19,24,28,34,36,

A lucky streak could solve a few financial problems in a hurry. Tact is the best in dealing with superiors or friends that could be a little troublesome just now. Some overseas contacts could spark on a renewed interest into overseas travel. For further development see someone who is into regular travel to this particular place. Some special celebrations that will involve you or a member of your family. Make sure you take others views into consideration when planning your next move in career matters. Busy time with work or social life but try not to irritate your domestic partners by insisting on everything your way. Some new ideas at your career prospects and maybe a big change.



SAGITTARIUS: November 23- December 20

Colour: Orange Day: Monday
Racing: 1,8,7,4, Lotto: 1,5,19,24,42,45,

You may be asked to help someone worse of than you. Relationships could be a little confusing at the moment. If you are on the look out for a soul mate this is the time when you will find one. People are interested in your opinions and searching your company. Use the time to improve your image and you will not go wrong. You might be nearer your goals than you think and your lifetime ambition should be within your grasp. Try to curb that urge to spend too much on trivial things you will need your money for some important matter soon. People in a position of influence will take an interest in your working methods and you could find yourself in a new situation. Your love life is in for a lift and that special person could become more prominent in your daily life.



CAPRICORN December 21- January 19

Colour: Fawn Day: Monday
Racing: 2,5,2,4, Lotto: 12,19,15,24,45,32,

To be lucky, you have to do something about it, sometimes pushing is half the battle. Big changes are on their way and will affect most aspects of your life. Lucky break long in coming should be around just about now take care you do not miss an opportunity when it's presented. You might have to work a bit harder; results may be worth the effort. There could be much more work for you to do in the near future but the challenge will invigorate you and give you more prestige among colleagues. Someone you have not seen for a long time will suddenly come back into your life. Improvements in your family environment will bring extra expenses but also enjoyment of life. Your attitude towards a certain person will not help matters to improve a little understanding could go a long way.



AQUARIUS: January 20- February 19

Colour: Blue Day: Friday
Racing: 2,4,8,7, Lotto: 1,5,40,28,34,33,

A very progressive period where you should achieve most of your hopes & wishes. Small details are important; keep an eye on all business matters. Travel opportunities are highlighted; or visitors from surprising places could delight you. You may be involved in something different with interesting new ideas. Extra expenses may occur but the result should be worth the spending. Extra jobs should give you great pleasure and its helping someone you care for. Something that is not in your future plans could suddenly pop up into your life. New job or change in your interests will give you a long awaited energy boost and happier mood will prevail for the rest of the period.



PISCES February 20- March 20

Colour: White Day: Tuesday
Racing: 5,6,4,1, Lotto: 12,19,24,35,36,42,

If you find yourself with the wrong decisions on your hands no good being sorry, just do the best to sort it out and get on with your life. You will get the support of your loved ones and you will triumph in the end. Take some time off to do what you want to do at present. A happier outlook and there could be more success with your plans for the future. Your lack of concentration could be due to you being unsettled. Romance is in the air and someone special should cross your path or an on going relationship becoming more exciting. Don't spend time with down and depressed friends spend your time with bright and happy people. Career affairs need tact ad you may be too out spoken or radical with your ideas.

Loch Sport Surf Tide Chart - Apr 2011

Fri 1	2:23am	0.6	Sat 9	6:51am	0.5	Sun 17	1:49am	0.3	Mon 25	2:20am	1.5
	8:29am	1.5		12:54pm	1.2		7:55am	1.7		9:28am	0.5
	2:49pm	0.5		6:11pm	0.8		2:01pm	0.3		3:47pm	1.2
	9:03pm	1.5	Sun 10	12:43am	1.6		8:22pm	1.8		9:03pm	0.8
Sat 2	3:02am	0.6		7:47am	0.5	Mon 18	2:46am	0.3	Tue 26	3:24am	1.5
	9:08am	1.5		1:51pm	1.2		8:51am	1.6		10:20am	0.5
	3:19pm	0.5		7:07pm	0.8		2:47pm	0.4		4:43pm	1.3
	9:34pm	1.5	Mon 11	1:39am	1.6		9:09pm	1.9		10:14pm	0.8
Sun 3*	2:40am	0.5		8:48am	0.5	Tue 19	3:42am	0.2	Wed 27	4:25am	1.4
	8:44am	1.5		2:59pm	1.2		9:48am	1.5		11:05am	0.6
	2:47pm	0.5		8:14pm	0.8		3:33pm	0.4		5:31pm	1.3
	9:04pm	1.6	Tue 12	2:45am	1.5		9:56pm	1.9		11:20pm	0.8
Mon 4	3:18am	0.5		9:51am	0.5	Wed 20	4:39am	0.2	Thu 28	5:20am	1.4
	9:22am	1.4		4:10pm	1.2		10:44am	1.5		11:45am	0.6
	3:16pm	0.5		9:31pm	0.8		4:20pm	0.5		6:12pm	1.4
	9:35pm	1.6	Wed 13	3:55am	1.6		10:44pm	1.9	Fri 29	12:15am	0.7
Tue 5	3:56am	0.5		10:49am	0.4	Thu 21	5:37am	0.2		6:09am	1.4
	9:59am	1.4		5:10pm	1.3		11:41am	1.4		12:21pm	0.6
	3:45pm	0.6		10:44pm	0.7		5:09pm	0.6		6:49pm	1.5
	10:06pm	1.6	Thu 14	5:01am	1.6		11:34pm	1.8	Sat 30	1:02am	0.7
Wed 6	4:36am	0.5		11:41am	0.4	Fri 22	6:34am	0.3		6:54am	1.4
	10:39am	1.3		6:01pm	1.5		12:40pm	1.3		12:55pm	0.6
	4:16pm	0.6		11:51pm	0.6		5:59pm	0.7		7:23pm	1.6
	10:40pm	1.7	Fri 15	6:01am	1.7	Sat 23	12:25am	1.8			
Thu 7	5:17am	0.5		12:29pm	0.3		7:33am	0.4			
	11:20am	1.3		6:49pm	1.6		1:41pm	1.2			
	4:50pm	0.7	Sat 16	12:51am	0.5		6:54pm	0.8			
	11:16pm	1.6		6:58am	1.7	Sun 24	1:20am	1.6			
Fri 8	6:02am	0.5		1:16pm	0.3		8:32am	0.4			
	12:04pm	1.2		7:36pm	1.7		2:45pm	1.2			
	5:26pm	0.7					7:55pm	0.8			
	11:56pm	1.6									

* Daylight Saving ends.

Moon Phases - New - 4th 1st Qtr - 11th Full - 18th 3rd Qtr - 25th

Tide Chart courtesy of Helen McFarlane



WELLINGTON COMMUNITY NO INTEREST LOANS SCHEME (NILS)

**provides no interest loans for
low income consumers**

This scheme has been set up to assist people with the purchase or replacement of household appliances such as refrigerators & washing machines and also educational or medical special needs items.

Small loans for any other worthwhile purpose will be considered.

Interviews are available in Sale, Maffra and Yarram.

To apply please contact:

Uniting Care Gippsland - 51447777
CAVA - 51438889
St Vincent de Paul - 51444183
Yarram & District Health Service - 51820222

7	4	1	6	2	9	8	3	5
5	3	2	7	8	4	6	1	9
6	9	8	5	3	1	4	7	2
2	1	3	8	7	6	5	9	4
4	8	6	3	9	5	7	2	1
9	7	5	4	1	2	3	8	6
1	5	7	2	4	3	9	6	8
8	6	9	1	5	7	2	4	3
3	2	4	9	6	8	1	5	7

Sudoku Answer

Loch Sport Surf Tide Chart - May 2011

Sun 1	1:43am	0.6	Mon 9	12:21am	1.7	Tue 17	2:39am	0.3	Wed 25	2:30am	1.4
	7:36am	1.4		7:26am	0.5		8:39am	1.5		9:20am	0.6
	1:27pm	0.6		1:40pm	1.3		2:14pm	0.5		3:49pm	1.3
	7:55pm	1.6		6:55pm	0.8		8:44pm	2.0		9:32pm	0.9
Mon 2	2:23am	0.5	Tue 10	1:16am	1.6	Wed 18	3:34am	0.2	Thu 26	3:29am	1.4
	8:18am	1.4		8:22am	0.4		9:36am	1.4		10:03am	0.6
	2:00pm	0.6		2:40pm	1.3		3:03pm	0.6		4:37pm	1.4
	8:27pm	1.7		8:02pm	0.8		9:33pm	2.0		10:41pm	0.8
Tue 3	3:00am	0.5	Wed 11	2:19am	1.6	Thu 19	4:27am	0.2	Fri 27	4:29am	1.3
	8:59am	1.4		9:16am	0.4		10:32am	1.4		10:43am	0.6
	2:33pm	0.6		3:40pm	1.4		3:54pm	0.6		5:22pm	1.5
	9:00pm	1.7		9:15pm	0.8		10:22pm	1.9		11:43pm	0.8
Wed 4	3:39am	0.4	Thu 12	3:27am	1.6	Fri 20	5:20am	0.2	Sat 28	5:25am	1.3
	9:40am	1.3		10:10am	0.4		11:27am	1.3		11:24am	0.6
	3:07pm	0.7		4:36pm	1.5		4:44pm	0.7		6:03pm	1.6
	9:34pm	1.8		10:29pm	0.7		11:10pm	1.9	Sun 29	12:35am	0.7
Thu 5	4:19am	0.4	Fri 13	4:35am	1.6	Sat 21	6:11am	0.3		6:18am	1.3
	10:23am	1.3		11:00am	0.4		12:21pm	1.3		12:03pm	1.6
	3:43pm	0.7		5:28pm	1.6		5:35pm	0.7		6:41pm	1.6
	10:10pm	1.8		11:39pm	0.6		11:57pm	1.8	Mon 30	1:21am	0.6
Fri 6	5:01am	0.4	Sat 14	5:39am	1.5	Sun 22	7:02am	0.4		7:07am	1.3
	11:08am	1.3		11:49am	0.4		1:14am	1.3		12:40pm	0.7
	4:24pm	0.7		6:18pm	1.7		6:27pm	0.8		7:18pm	1.7
	10:50pm	1.7	Sun 15	12:42am	0.4	Mon 23	12:45am	1.6	Tue 31	2:02am	0.5
Sat 7	5:46am	0.4		6:40am	1.5		7:50am	0.5		7:53am	1.3
	11:55am	1.3		12:38pm	0.4		2:07 pm	1.3		1:18pm	0.7
	5:08pm	0.8		7:08pm	1.8		7:23pm	0.8		7:54pm	1.8
	11:33pm	1.7	Mon 16	1:41am	0.3	Tue 24	1:36am	1.5	Wed 1	2:41am	0.5
Sun 8	6:35am	0.4		7:40am	1.5		8:36am	0.5		8:37am	1.3
	12:45pm	1.3		1:25pm	0.5		2:58pm	1.3		1:56pm	0.7
	5:57pm	0.8		7:56pm	1.9		8:25pm	0.9		8:30pm	1.8

Moon Phases - New - 3rd 1st Qtr - 11th Full - 17th 3rd Qtr - 25th



GARY POWERS

REAL ESTATE PTY. LTD

56 Lake Street, Loch Sport. 3851

Loch Sport & Ninety Mile Beach

- ◆ House blocks from \$50,000
- ◆ Holiday Homes from \$129,00

Being the longest established Real Estate Agency in Loch Sport we have put together a substantial list of holiday homes. We cater for families up to 11 people or a romantic weekend for two.

All properties can be viewed and booked at www.garypowersrealestate.com

Make your next holiday special

Ph: (03) 5146 0411 Mobile: 0428 514 088