



Loch Sport Link

October - November 2011

LINK now available online - www.lochsport.org.au

Gold Coin Donation



LOCH SPORT EMERGENCY PREPAREDNESS

Community Emergency Planning for Loch Sport

A successful application has been secured by Wellington Shire Council for a **Natural Disaster Resilience Grant for 2011-2012** for *Emergency Planning for High Risk Communities*, which will include Loch Sport and other communities within the Shire.

This grant, with input from the community, will enable an emergency planning guide book and template to be produced and assist Loch Sport and other communities to develop a

Community Emergency Plan.

Another application has also been made through the **Fire Ready Communities Grants 2011**, which will enable a Community Emergency Planning Project to be conducted with the Loch Sport Community. A facilitator will work closely with the Community, emergency agencies and organisations to deliver an Emergency Preparedness Planning Project. An initial meeting with local emergency agencies supported the grant application and discussed safety issues of a concern for the community.

An emergency preparedness survey of the whole community will be conducted to form the basis of the project and a meeting for interested local organisations and community members will be called in October to initiate the project.

For further information please contact:

Helen Montague

Community Facilitator –

Bushfire Preparedness Wellington

Shire Council

1300 366 244

helen.montague@wellington.vic.gov.au

The planning work for the development of a Neighbourhood Safer Place – Place of Last Resort (NSP – PLR) during a bushfire event at the Loch Sport Lions Park is well underway. Minor vegetation modification is required to some of the vegetation around the Lions Park to reduce the amount of radiant heat exposure to people using the area as an NSP – PLR during a bushfire.



A detailed Vegetation Assessment has been completed by an independent consultant to ensure we minimise any impact on the vegetation to the east of the Lions Park Rotunda and 'offset' any removal of vegetation.

The tender has also been advertised to construct some retaining walls along National Park Road to prevent soil erosion along the roadside reserve on the steep batters as a result of roadside slashing. This is to provide for some more protection from radiant heat and for a safer route for both pedestrian and car travel from the town to the NSP – PLR.

Operationally, there will be some work beginning on vegetation removal/ slashing along National Park Road and Cliff Street to cater for the safer access and egress route in late September and October.

Vegetation work at the NSP – PLR site at Lions Parks is expected to begin in mid November, after all the appropriate permits for the vegetation management have approved and received at Council. The site is expected to be an official NSP – PLR by mid December, to coincide with the busy holiday season experienced at Loch Sport during the bushfire season.

For more information with regards to NSP – PLR's, please visit CFA's website at <http://www.cfa.vic.gov.au/firesafety/yourcommunity/neighbourhood-safer-places.htm>

Steven Blake

Emergency Management

(Fire) Coordinator

1300 366 244

Community Market

Sunday 30th October
Loch Sport Public Hall
Doors open 8:00am

Stall Bookings 5146 0145

LSCH Inc. Programs

After School /Holiday Program

- Ancestry Group
- Art Group
- Book Club
- Calligraphy
- Chronic Pain - Self Management Group
- Computer Class
- Community Kitchen
- Craft Group
- Dance Club
- Exercise Group
- History Group
- Mobile Phone
- Model Boat Building
- Movie Group
- Music Jam
- Quilting Group
- Swimming Group
- Tai Chi
- Walking for Fitness

CONTENTS	Pg #
Community Information	2
Community House News	3 - 4
Nature Watch	6 - 7
Advertisers	8 - 13
Community Groups	14 - 18
Our Community	19
Wellington Shire	20
Calendar of Events	21
Horoscopes	22
Tide Charts	23 - 24

The LINK is a Loch Sport Community House Inc. publication aimed at providing news, information and entertainment to its readers.

Physical Address: Public Hall
National Park Road
Loch Sport

Mailing Address: P.O. Box 587
Loch Sport
Victoria 3851

Phone: (03) 5146 0145

Fax: (03) 5146 0195

Email: lsch@netspace.net.au

Web: www.lochsport.org.au

THE LINK IS AVAILABLE FROM:-

- The Lodge
- Mini Golf Sanctuary Café
- Loch Sport Bakery
- Loch Sport General Store
- Loch Sport Fire Shed (op shop)
- Loch Sport Fish & Chips
- Loch Sport Holiday Park
- Gary Powers Real Estate
- FOB Real Estate
- Loch Sport Marina Hotel
- Online -www.lochsport.org.au
- Tourist Information Centre - Sale
- Golden Beach Foodarama

LINK CONTRIBUTIONS:-

Deadline for articles & advertising for Dec 2011/Jan 2012 issue is **November 11th, 2011** and can be lodged by the following means:-

- Text:** - email
word 97 doc*
(not word 2007)
- memory stick/disk

Photo/artwork:

- physical prints of artwork
- memory stick/disk

in one of the following computer graphic formats: BMP, GIF, JPG*
Please limit file size to under 1 meg

Please no handwritten or typed articles

DISCLAIMER

"Views expressed by the contributors are theirs alone. They are not endorsed by the Loch Sport Community House Inc. or the editors. No responsibility is accepted by the "LINK", its editors or printers for the accuracy of information contained in text and advertisements.

Neither the editors, nor the Loch Sport Community House Inc. nor its committee in any way endorses or takes any responsibility whatsoever for any material contributed.

All contributions must be accompanied by the full name, address and telephone number of the contributor for verification purposes, not publication."

COASTAL BUS SERVICE

	Mon/Fri	Wed
Departs		
Sale GCS	08:40	<=
Loch Sport (Wallaby St)	09:30	9:30
National Park Gate	09:35	09:35
General Store	09:45	09:45
Golden Beach	10:10	10:10
Longford	10:30	10:30
Sale Centre	10:40	10:40
Sale - Hospital	10:45	10:45

Return

Sale - Hospital (from)	4:15	1:20
Sale Railway	4:20	
Sale Centre	4:30	1:30
Longford	4:40	1:40
Golden Beach	5:00	
Loch Sport Turn-off	5:10	2:10
General Store	5:25	2:25
National Park	5:35	3:35
Swan & Wallaby	5:40	3:45

Paradise Beach Passengers

MUST BOOK Little's Coaches

51 44 2623 by 4 pm previous workday



MOBILE LIBRARY

Lake Street Car park
Tuesday & Thursday
10:30am - 1:00pm
2:00pm - 4:30pm

Books, talking books, DVD's,
videos & music CD's
View the range of items
for your entertainment,
hobbies & crafts.

Research and membership
is free for the family

ALL WELCOME

TIP TIMES

Mon ~ 12 pm - 4 pm
Fri, Sat, Sun ~ 12 pm - 5 pm



LOCH SPORT PUBLIC HALL

National Park Rd
For Hall bookings
please phone
5146 0145



Loch Sport

Community Health Centre

Nurse available - Mon to Fri

Administration Hours

Mon - Thurs 8:30am - 12:30pm

for nurse or doctor appointments

& payment of accounts

The doctor is available

for appointments

all day Tuesday

5146 0349

EMERGENCY NUMBERS

Ambulance	000
Report Fire	000
Police	000
L.S. Police (currently unavailable)	
L.S. Health Centre	5146 0349
RACV	5146 0511
Red Cross	5146 0637
SES Loch Sport	5146 0263
L.S. Wildlife Rescue	5146 0940
SES Emergency	132500
Sale Police	5143 5000
Sale Hospital	5143 8600
Sale Shire Council	1300366244
Poisons Info	13 11 26

CHURCH SERVICES

Loch Sport Assembly of God

10:00am Every Sunday
Meeting in Public Hall.

Catholic Mass

10:00am Catholic Church
Mass 1st Tuesday
at Community Church

St Marks's Anglican & Community Church

10:30am Services 2nd & 4th
Sunday

ALL WELCOME



Loch Sport LINK

is available online

at

www.lochsport.org.au

Men's Shed

With two enthusiastic male office volunteers now working at the House, the prospect of a Loch Sport Men's Shed is now a reality.

The proposed site for the shed will be on the flat land adjacent to the southern side of the hall. Having the shed built on this site will reduce the cost of a new building as toilets and kitchen facilities will be accessible in the hall.

Preliminary site plans have been submitted to the Wellington Shire for approval. We are waiting on the announcement of two major funding rounds for the establishment of new Men's Sheds.

Joe, Terry and Marlene attended a Men's Shed Cluster Meeting on Friday 14th at the Sale Men's Shed. Representatives from Victorian Men's Shed Association, Australian Men's Shed Association and WorkSafe gave interesting presentations.

Approximately 60 men from a number of Victorian Men's Sheds attended, including representatives from Ballarat East.

The process has now begun and we are keen to hear from any local men who are interested in coming onboard.

Model Boat Building

This class has now begun. Interested participants will meet on Monday mornings at 10:00am.

New Year's Eve Fireworks and Foreshore Carnival

After consultation with the Wellington Shire and home owners the foreshore carnival will now be situated at a new site west of the public toilets.

The fireworks will be launched from the outcrop of sand behind the public toilets as it has in the past.

The Loch Sport Community House was successful in obtaining a Wellington Shire Event Grant to help finance the pyrotechnics. Letters have been sent to local businesses to ask for support in funding the remaining cost of this worthwhile event.

**Home is where the Hall is
Friday 4th November**

11:30am - 2:30pm

The Loch Sport Community House will be hosting a celebratory barbecue luncheon for our local residents, both current and past; to acknowledge the part our Public Hall has played in the shaping of our Loch Sport identity and its ongoing contribution to our community capital.

If you have any memorabilia documenting past events at the hall and you would like to share them on the day please contact the office on 5145 0145.

RSVP by 28th October 5146 0145.

WalkTober

October 17th—October 28th 2011.

Contact the office 5146 0145 to register

Bollards launch

On Monday October 17th the Loch Sport Community House will officially launch the "Loch Sport Bollards".

After three long years this project is now completed. Funded by Kilmany Uniting Care, it brought together the students, parents and staff of the Loch Sport Primary School and local artists to make something that will leave a lasting legacy that will add to the community capital of Loch Sport.

The bollards have been painted to represent each student participating in their favorite activity that is available here in Loch Sport. Activities include fishing, swimming, surfing, body-boarding, skateboarding and motorbike riding. Local Primary School staff, students & local artists – Our Bollards Project is completed and will finally have an official launch October 17th 2011. This project would not have been completed without the enthusiastic input from Beck Webb, Marie Vennells, Mick & Dinah Barton and Marlene Parsons.



The bollards as raw power poles;



in their new home at the Loch Sport Lions Park;



the finished bollards.

**Loch Sport Community House Inc.
Opening Hours**

Monday, Tuesday & Friday
9:30am - 3:00pm

Fees and charges

Classes carry a \$3.00 activity charge
All House users are required to pay a \$2.00 annual membership fee.

Services available

Photocopying	
A4 sheet - black	20c
- colour	30c
A3 sheet - black	60c
- colour	\$1.00
Internet	\$2.00 per hour
Emails	\$1.00 send/receive
Fax	\$1.00
Resumes/CV's	\$5.00



**Loch Sport Community House
Committee of Management
2011-2012**

- Geoff Vennells - President**
- Bill Klein - Vice President**
- James Montgomery - Treasurer**
- Marg Klein - Secretary**
- Karen Livens - Dinah Barton**
- Ann Graham - Rosie Boyd**
- Marie Vennells - Beth Riddock**
- Cheryl Bamkin - Barbara Lloyd**
- Marg Desira - Ken Dyster**
- Dianne Fletcher - Judy Oldfield**
- Kylie Eicke**

Bus Trip

Caulfield Craft Show

Friday 28th October

Departing - 7:00am

Returning - Late

Cost - \$30 (bus)

& entry into show

Ph Office 5146 0145

or Rosemary 5146 0983

Enterprise Cruise

On Monday 28th November the L.S.C.H. will once again set sail on the Enterprise for an enjoyable day cruising to Paynesville.

Participants will purchase their own lunch.

Cost - \$20.00

Please contact the office on 5146 0145

as few seats remain.



L.S. COMMUNITY HOUSE DANCE GROUP

NOVEMBER

Sunday 20th 1.15pm-4.00pm
 BYO shared afternoon tea
 Band – Eddy

DECEMBER

Friday 16th 6.00pm dinner
 (details to be confirmed)
 8.00 pm Dance
 BYO shared Supper
 Band – Russel & Adam

All enquires Phone 5146 0422 or 51460938



LOCH SPORT HEALTH CENTRE COMMITTEE
Monday, 21st November 2011
1:00 - 2:00pm
 at the Loch Sport Community Health Centre
 Interested members of the Loch Sport community are invited to attend the Health Centre Committee meeting. The meeting is an opportunity for you to raise and discuss any matters relating to the health service with Central Gippsland Health Service representatives.
 We look forward to your participation.
 For further information please contact the Centre on 5146 0349. or Ruth Churchill on 5143 8800.

After the two month break, some changes have been made to our dancing program. Due to low numbers the Thursday afternoon dancing has been cancelled.

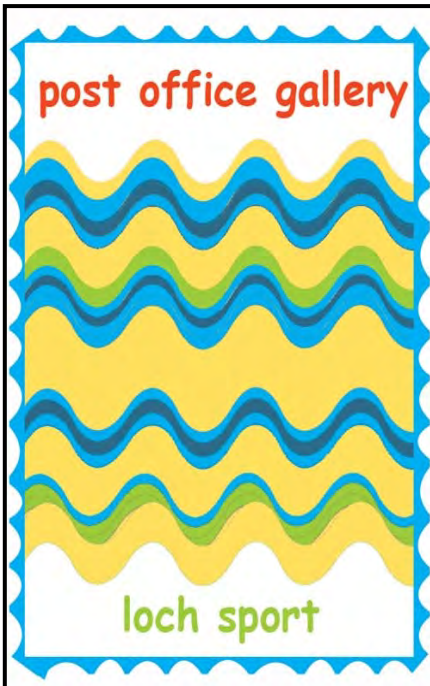
Our energies have now been put into Wednesday evening activities. These have attracted local dancers young and not so young and some from Golden Beach.

If you would like to learn ballroom dancing, we have learners classes commencing at 6.30pm to 8.00pm, and a Social Dance to follow at the Loch Sport Public Hall. Feel welcome to come along and join us for fun and fitness. Cost \$4.00. Children with an adult free.

Weekend dances at the Public Hall in National Park continue as follows at a cost of \$7.00 per head.

OCTOBER

Saturday 24th 8.00pm – 11.30pm
 BYO shared supper
 Band – Harmony Plus



POST OFFICE GALLERY LOCH SPORT

Local Loch Sport artists Dinah Barton, Lisa Timms and Donna Marcius are holding an exhibition at the Stratford Courthouse Gallery East Gippsland October 13th - Nov 7th.

The work will showcase textiles, ceramics and jewellery.

The three artists met through activities at the Loch Sport Community House where the idea of a joint exhibition was first conceived.

Dinah retired to Loch Sport from Melbourne after many years lecturing in art and design.

Travels throughout the Australian outback and the local environment in Loch Sport have provided the inspiration for her textile art particularly the bird life on Lake Reeve. Dinah's philosophy behind her finished pieces embrace the recycling of fabric and thread.

Lisa is fascinated by the way forms can be created through the most simple

shapes. She plays with clay to produce ceramic sculptures that are somehow human but somehow not. Her angels despite their geometric heads seem very feminine and the bodiless heads have an air of masculine authority. Lisa works spontaneously and imaginatively using different techniques to produce creative work for the viewer to process.

Donna is a qualified jeweller having worked in the trade for over 30 years. She has been able to experience nature to the fullest because of her long association with Loch Sport. A strong interest in the Art Nouveau period 1890-1914 with its beautiful flowing lines can also be detected in her work.

This period was a reaction to the industrialization of the world and Donna strongly believes we need to react again to the present time to encourage more handcrafted items.

STRATFORD COURTHOUSE
Silver, Cotton & Clay
 13th October
 - 7th November
Showcasing works by local artists:-
 Donna Marcius,
 Dinah Barton
 & Lisa Timms



Donna Marcius, Dinah Barton and Lisa Timms

There have been many versions of how Loch Sport became the town we know today.

The common story seems to be that Mr. Leon Le Grand bought land in the early nineteen forties, this does not appear to be correct as I cannot find evidence of land being registered to him before 1953.

The first land registered relevant to the town of Loch Sport was land owned by Sarah Evelyn Barton deceased, and was sold by her executor Frederick Charles Wesley Barton to a Joyce Alison Harding on the 28.4.1947.

There was a second parcel of land which Joyce Alison Harding purchased on the 6.4.1950, this land was sold to Mr Leon Le Grand on the 22.6.1953.

She subsequently sold the land she had purchased in 1947 to Mr Leon Le Grand and his partners Arthur James Carroll, and Phyllis Myrtle Le Grand on the 22.7.1953.

The land was subdivided in two lots, one on the 13.5.1959 and the other on the 29.12.1959, the above information is recorded by the Victorian Titles Office. with the titles office.

The Sheepwashers Lament

When first I took the western track, the year was sixty one, The master was a worker then , the servant was a man; But now the squatters, puffed with pride, they treat us with disdain; Lament with me the bygone days that will not come again.

With perfect health, a mine of wealth, the bushman stout and strong, Would smoke his pipe and hum his tune, and sing his cheerful song. But now we toil from morn till night, though much against the grain, Lamenting on the bygone days that will not come again.

I once could boast two noble prads, to bear me on my way, My good revolver in my belt, I never felt dismay, But lonely now I hump my drum in sunshine and in rain, Lamenting on the bygone days that will not come again.

I earned a decent cheque at times, and blued it like a lord, My dress a prince's form would grace, and sprees I could afford, But now in tattered rags arrayed, my limbs they ache with pain, Lamenting on the bygone days that will not come again.

Anon

Courtesy Harper Collins Publishers

CherCol - ectables Licensed Second Hand Goods

Lot 12 Progress Rd Loch Sport
(on road to transfer station)
Open
Saturday 12:30 - 3:30pm
Sunday 12:30 - 2:30pm
All holiday hours will be advertised on notice boards
Please come and browse
Ring 5146 0464
for information



Pet Minders

We will provide pet minding services for your animals while you're away. \$10.00 per day will include feeding & a walk for dogs, half hour duration. Call Marg on Ph: 5146.0219

Barry & Annette Lett Funeral Directors

Care, Compassion and Service with dignity for the people of Gippsland

Prearranged and Prepaid Funeral Plans available

Phone (03) 5143 1232

67 Macarthur Street Sale

24 Hour Personal Service

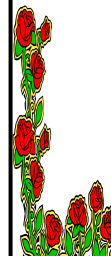


Photo taken in 1980 in front of Loch Sport Lodge.
Recognise any faces?



Want Amway?
then Phone
Dawn on 5146 0599

Prompt, reliable service guaranteed



SEA EAGLES - ROMANCE IN WINTER



A loving pair



Getting ready



Male and female

Dear readers,
As we were unable to write another eagle tale in time for this publication, we thought we would just fill you in with what all the Sea-eagles are up to at this moment of writing. All pairs in Lakes National Park have not laid their eggs yet (August 14th) which is the latest date we have recorded in 7 years but out on the lake we were lucky enough to see (after 5 hours!) mating take place between one of the main pairs in our study and Ken was actually able to video it. It is possibly a world first and we were pretty thrilled to have had the good 7D video camera ready on such a glorious sunny winter afternoon. Copulation up on a very obvious branch was preceded by a beautiful duet of loud honking which alerted us to some activity in what we thought was a relatively humdrum afternoon but the actual event lasted less than one minute! The male must have felt quite pleased with himself as he immediately left the female to go out foraging out over the lake. Typical male, we thought! Food and sex!! What could be better! Female Sea-eagles however are very passive and relatively inactive right before egg laying, possibly to conserve weight and are visible for many hours in their nesting area.

It wasn't long however, before the male returned back onto the sunlit branch snuggling very intimately to his larger partner again. This time, we didn't mind how protracted the wait would be in the rocking boat –

we thought the chances of the performance re-occurring were quite high, especially as eggs weren't laid yet and soon we were recompensed by additional honking and a better opportunity for filming, Ken being more prepared. Comically, the second time the male stood in the wrong position on the female eagle's back and nearly overbalanced, appearing to almost slide off her grey wings. His obvious shiny black talons were neatly curled, preventing them boring into her back feathers which, if they did would cause significant mutilation. We thought how clever this was, how delicate and wonderful. What had been an uneventful winter afternoon proved to be one of the best. Eggs will take 3 days to form after mating and depending on the pairs' food availability, either one or two white eggs will be laid.

We would like to remind people to email us if they would like to join the free Sea-eagle Association - to receive the monthly news letter. Our new website also has some of our very best Sea-eagle photos: jennyhodge.com. Another great place to see live Sea- eagle action is on the Eaglecam on the Birds Australia website. The pair in Sydney have laid 2 eggs but we are rather more partial to our special pairs in the Gippsland Lakes who provide a constant source of enjoyment for everyone.

Jenny and Ken Hodge
email: khodge07@bigpond.com



BETHS NATURE DIARY

On The Beach

After the devastation the high tides and big waves caused to the dunes along the ninety mile beach as well as the garbage washed up, the dead penguins, seals and birds, it's great to see something good again.

The whales are back. Some have put on a great show for the people watching while others spend most of their time underwater, coming up and blowing a water spray into the air, rolling over with pectoral fins in the air, then going under again. They look so graceful doing their thing for such big mammals. Some have had young calves with them but most were two to three adults together.

For those people who walk the beach, if you take a plastic bag with you, on your way back from your walk you could pick up some of the plastics, bottles, rope and nets etc and help clean up the mess that was created and also save the lives of some of our sea creatures.

Lesley

Fishing

As a consequence of the weather, our catches have been rich in salmon. After the solstice we will again have to wait for longer days and deep gutters for better fishing. Those who persist in the most favourable conditions will be rewarded, however there may be anomalies which cannot be foreseen which will affect your angling catch.

The bait, the weather conditions and the strength of your line, the wind, breakers, side wash, rips, crabs and corrugations in the sand will give you an understanding as to what is happening between you and your rod. All of these add to the anticipation of a catch but there are always the disappointments.

All in all you take the good with the bad and enjoy your angling experience.

Raymond

Hi Everyone,
I thought this is a good time to let everyone know in Loch Sport that I am still around working with Wildlife rescue and looking after the injured or sick creatures that come to my attention in our lovely town.

Over the past number of years, since I came to live at Loch Sport, I have been quietly working away in the background taking in animals and birds that have been brought in to me or I have been called out to attend to a rescue of distressed animals, birds, or to organise an effective euthanasia.

At many times I have worked in contact with Wildlife Victoria, DSE, police, and with the advice and instruction of other wildlife shelters and carers. As a consequence, my knowledge is increasing as I experience different situations, each of them all very different and unique from each another.

This work is very rewarding, with many a success story, however at times it is very distressful as with most situations dealing with illness, injury or distress, not all that ends well!

I must state that this position that I hold is not a paid position, nor can I claim funding for my running costs, as some persons believe it to be. I simply saw a urgent need, when I came to live in this town, a need for our wildlife to be looked after as best as possible, within my capacity as a person, in the capacity of safety and with what equipment that I may have or not have.

I would like to bring to everyone's attention the kindness of many of our local people with their support in my work. There is Joan, who runs her Saturday meat raffle at the Loch Sport Hotel, (thank you all the hotel patrons who bought Joan's raffle tickets) and Jill and Allan from the Marina Hotel for their kind donation from the stuffed toy animals and the Loch Sport CFA for their donation and the opportunity for me to have my tin out on the Op Shop counter each Sunday.

I must thank the Loch Sport Marina Hotel female staff who thoughtfully kept the music tone down and put out fresh water for a female koala and her baby who have had a harrowing experience near the marina one weekend.

The female koala was on the ground and had something frighten her. She tried to swim the marina waters with her baby on her back, then had stones thrown at her by some children. Being terrified, she tried to scale a large marina post jutting out of the water. Upon getting to the top all wet still clutching her baby, she found difficulty

in hanging on because the post had tin placed across the top to prevent wood rot. After she got into position she was not game to move in case she slipped into the water. I rescued her in the early hours of the morning whereupon she ran up a tree alongside the hotel to safety and peace.

Which brings me to my next point. Over the past few years I have rescued a number of female koalas which have come down to the ground to drink Lake Victoria and Lake Reeve's brackish water. This is **not** normal behaviour from koalas and indicates something is wrong with their health. They generally get enough moisture out of their gum leaves.

Three of these koalas went into veterinarian care and then two went on to a specialised koala shelter for further care.

From the assessment of the vets, these koalas all had various stages of renal failure and the one in the tree outside the hotel has early indications of this debilitating disease.

If the disease is caught early enough it can be treated but if left too long the koala dies. They cannot get moisture effectively from their eucalyptus leaves, hence they come to ground to seek water, any water. By this time the disease is fairly well progressed.

It appears that overall our koalas are going through trauma with our urban development. The removal of their vital food source, the koala's favourite eucalyptus the *Manna gum*, is a major contributor. Koalas do not eat all eucalyptus gum leaves and only eat in the south of Victoria, the blue gum, the swamp gum and in Loch Sport, the Manna gum.

As we remove this tree the koala cannot move through the canopy and has to come to ground to seek out the next tree. In our town's situation, this means walking through people's or public properties, subjecting them to dog attack, being hit by cars, pestered by people, etc.

A koala does not permanently live in one tree and moves every three to four days on to another tree wherever that might be in their territory. They cannot just wander and move into another koala's territory. They have to stay within their own territory. If this is being damaged then the koalas will suffer in their numbers and health.

As many of us have come to live in Loch Sport because of the natural beauty, and wildlife I am appealing to everyone to *PLANT A MANNA GUM* for our koalas. If we continue to cut down the koala's food, we effectively are aiding in the extinction of the koala out of our town.

As the manna gum grows into a large tree I recommend planting away from houses, probably at the front of the house or plant on the nature strip providing you do not have power lines present.

If the trees on your land grow too big, simply lop them, do not cut them down. Lopping ensures that the tree survives to feed more koalas.

Finally; if anyone is interested in becoming a wildlife rescuer, transporter or carer simply give me a call on 5146 0940. This is a volunteering position and needs someone who will work in with me in the *best interests* of our wildlife. The work load in this position does vary with the seasons and persons residing in the town.

Late winter, spring and early summer are my busy seasons, with autumn and winter being fairly quiet. We, as volunteers, only work to our safety. We only do what we can; we do find friendship with similar minded persons in our liaison with other shelters, carers and wildlife forums. This makes the bleak times all worth while in our rewarding times of successes.

Cheers to all in Loch Sport

Donna Jones

Winter fishing



**Loch Sport
Concrete Services**

Lot 4, Progress Road
(Industrial Estate)

Loch Sport

Concrete Mini Mix - Gravel Supplied

Bob Cat excavation hire
Block Clearing & Slashed
Driveway Formed & Layed
Excavation for House Sites
Auger Boring

Telephone Jason on
Mobile

0428 460 588



L. A. Marshall

Member MBA 9354

Renovations
Alterations
Extensions
Decks
Carports
ETC

Campbell Street
Loch Sport

0412 530 612

0431 378 533

CONCRETING

A.J. Guest
Concreting Pty Ltd

For quality concreting,
specializing in garage floors,
coloured concrete,
house slabs,
paving etc.

Phone Tony Guest
0418 328 526

**RAY MANN
QUALIFIED PAINTER &
DECORATOR**

Free quotes

Reasonable rates

Fully insured

35 years trade experience



Mobile: 0418101132

Email: raymann3@bigpond.com

**A & B
SEPTIC TANK CLEANING**

SEVEN (7) DAYS A WEEK

24 HOUR SERVICE

Andrew & Bronwyn Miller
Freecall 1800 063 387

TELEPHONE (03) 5144 6524
MOBILE 0427 347 655

**LAKESIDE DESIGN
& SIGNS**

Mob: 0418 349 250
Fax : (03) 5146 0112

- Kitchens & Bathroom Cabinets
- All types of Signage
- Banners
- Vinyl Lettering

E-Mail : lakesidesigns@iprimus.com.au



**DHC
ELECTRICAL**

Mick Luke

For all your Electrical Needs

Underground power a specialty

Reg. No. 7669

404 Sanctuary Road
Loch Sport

Phone 5146 0641
Mobile 0438 460 641

**LOOKING
FOR A PUMP??**



GIPPSLAND PUMPS & IRRIGATION
112 York Street, Sale Vic 3850
PH: 03 5144 2000 FAX: 5144 7400
MOB: 0429 139 446

gippslandpumps@bigpond.com

SALES, SERVICE, REPAIRS &
INSTALLATIONS, VALVES
FITTINGS - POLY, BRASS, S/STEEL
PIPES - POLY, PVC



Jill & Alan Hall's MARINA HOTEL

Telephone: (03) 5146 0666
BAR - BISTRO - BOTTLESHOP
Bistro open 7 days

A great place to enjoy a cold drink, a meal, a coffee and a fantastic view.
 The Marina Hotel Courtesy Bus,
 is available to pick you up, and get you home safely.
 Home deliveries available evenings & weekends including both meals
 & beverages - minimum purchase \$20 plus \$4 delivery
 Weekday Lunch time Specials are back! (see Gippsland Times)

Coming Attractions

Normie Rowe, Wendy Stapleton, or someone new; who do you want to see again?

LOCH SPORT GENERAL STORE

Licensed P.O.

with on-line EFTPOS

Hardware & Plumbing Supplies

LP & Auto Gas Supplies

Boat & Van Storage

Bait & Tackle

Telephone 5146 0300

**LOCH SPORT
GARDEN SUPPLIES AND
NURSERY**
 66 - 68 SANCTUARY ROAD
 5146 0513

For all your Gardening Needs
 Plants, Fertilizers,
 Plumbing & Timber Supplies,
 Mulches, Gravels, Concrete Mix
 and Screenings, Dry Firewood.

Open Daily
9:00am - 4:00pm

Closed Tuesday

MINI GOLF SANCTUARY CAFE
 64 Sanctuary Road
 5146 0422



Mini Golf, Video Hire, Take-a-way,
 Dine in - B.Y.O. Liquor License
 Milk, Bread, Groceries, Drinks etc

Opening Hours

Sun -Thursday 8:30 - 7.30pm
Frid-Sat-8:30am - 8:00pm
 closed Tuesday

For all your Meat Requirements

GUTHRIDGE MEATS

**Graham & Denise James,
Proprietors**

Specialising in Bulk
 Packs, BBQ Packs
 Smallgoods made on
 the premises
 278 Dawson Street
 Sale, 3850



PHONE & FAX ORDERS
(03) 5144 3381

FREE HOME DELIVERY - SALE AREA

MARTY'S TILING SERVICE

Ceramic and Slate

0418 746 453

Loch Sport

D & J HOME & HANDYMAN SERVICES

*Mowing
 Edging
 Tree Pruning
 Household Maintenance*



Competitive Rates
 Phone Derick & Judy
 on
5146 0120

THE LODGE LICENSED SUPERMARKET

- ◆ Authorised Newsagency
- ◆ Licensed Loch Sport Dairy
- ◆ ANZ bank Agency & Eftpos
- ◆ Fresh Produce & Deli
- ◆ Grocery - Bait - Ice
- ◆ Fishing Rods & Equipment
- ◆ Licensed Bottle Shop
- ◆ DVD Hire

**We Welcome your business
 Lake Street, Loch Sport**

Phone 5146 0353

ACTION TOSHIBA
OFFICE SHARP
MACHINES
 Pty Ltd
 96 Raymond Street,
 Sale, VIC, 3850
 Phone (03) 5144 1822

Member of

Gary Gargan
 Trading as SCENAR Victoria
 .Dip Remedial Massage
 .Scenar Therapist
 .Relaxation and Hot Stone Massage
**16 Anthony Court
 Loch Sport
 Vic 3851**
 scenarvictoria@dragnet.com.au
 By Appointment Only 
 0428 432 243

Dahlsens
BUILDERS
ONE STOP SHOP FOR
 ♦ Timber
 ♦ Hardware
 ♦ Pre-Fab Walls
 ♦ Roof Trusses
 ♦ Plumbing
 ♦ Expert Service
**48 MACARTHUR ST SALE
 PHONE 5144 2422**


 Phone Laurie: 5979 8749 Mobile: 0425 703 985
Laurie The Tree King
 Tree & Stump Removal
 Tree Lopping
 All Work Fully Insured

sayers repairs
 all mechanical work
kevin sayers
 mechanic
 1 government road
 loch sport
 3851
 0419365423
 kevin.sayers@hotmail.com
 51460133


Loch Sport Boat Storage
 Individual lockable steel sheds
 9m x 3m x 3.6m eaves
 Rates starting at \$880 p.a.
 24 hour access
 Lot 8 Progress Road
 Loch Sport
**Phone Brooke
 0422 419 454**

PETE'S ODDS & ENDS
 Do you need a handy man?
 No job too large or too small
 Tiling
 Painting
 Concreting
 Carpentry
 Paving
 Gardening

ALL WORK GUARANTEED
**Peter Marshall
 0434 574 701**

SMITHYS BOBCAT & EXCAVATOR HIRE
 5 Tonne Excavator (Rubber Tracks)
 4 in 1 Bobcat
 Foundations
 6M Tipper
 Landscapes Formed
 Driveways Cut
 Licensed Operator
 Sites Cleared
 Fully Insured
**GEOFFREY SMITH
 TEL: 0419 361 268
 0412 453 077**
 50-52 Carroll Street, Loch Sport


ALL BROTHERS PEST SERVICE 1800 815 160

 ♦ Pest Control
 ♦ Termite Treatments
 ♦ Pre-Purchase Inspections
“ One family, one goal great service”
1800815160



Russell Thomas Plumber

License No. 21433 ABN 19 320 416 038

**SERVICING LOCH SPORT & SURROUNDING AREAS
OVER 25 YEARS EXPERIENCE
NO JOB TOO BIG OR SMALL**

ALL WORK GUARANTEED

Specialising in

- ◆ New homes & Renovations
- ◆ Repairs & Maintenance
- ◆ Sewerage & Treatment Plants
- ◆ Hot water Systems
- ◆ Roofing & Spouting
- ◆ Gas Installation Only
- ◆ Drainage

PH: 0407 505 567

After Hours Tel: (03) 5146 0629

Fax: (03) 5146 0587

Email: russellt@vic.australis.com.au



Phone Brian 0418 360 540

After hours (03) 5978 7055

For A free Quote



AVON WATERTANK CLEANERS

Improve the quality of your water

- Clean Domestic Water Tanks
- Guttering
- Desludging Swimming Pools & Fish Ponds

Retain up to 5000 Gallons of your water

For Bookings & Enquiries Contact
Troy Schleifer - Mobile: 0428 451 969
1 Gooch Road, Stratford Vic. 3862
Phone: (03) 5145 6208

Chemical Free Vacuum & Pressure Cleaning Service

LOCH SPORT CARPET CLEANING

servicing Loch Sport for 10 years

Carpets Cleaned Dirt Cheap
Reasonable Rates ...

New Service - Tuesdays
or by arrangement

Drop your Carpet Squares or Mats off
at

Depot before 10am
and pick up at 12 noon

For Prompt & Courteous Service

Phone 5146 0999
Mobile: 0437 365 417



**Certificate 11in Engineering
- Production (Air Conditioning)**

AH: (03) 5146 0629



Fax: (03) 5146 0587

Email: russellt@vic.australis.com.au
Web: www.russellthomas.com.au

Peter Medlings Complete Boating Services

For all your marine and
Paint work, Timber work,
Canvas covers, Electrical,
Outboard and Diesel repairs,
Boat detailing, Antifouling,
Boat Sales and Trailer hire.

**Please call Peter on
0407 233 020**

TANKFORMERS



Now Available in Loch Sport
at
Loch Sport Garden Supplies

Sizes: 1000 ltr to 2800 ltr

Phone 5146 0513

<http://www.tankformers.com.au>
email: sales@tankformers.com.au



**H.V.B. Building
& Construction**
P/L

Member M.B.A.
No. 2730
A.C.N. 069 877 023

Extensions, Renovations,
New Homes, Transportable Buildings

Hans Visser

P.O. Box 562, Loch Sport, Vic, 3851
Tel: (03) 5146 0452
Mobile: 0427 350 118

Telling a Life Story



There is a saying that a photo tells a thousand words. This is especially so when photos are used at funeral services as part of the process of celebrating a life.

Why is this the case? Often the people attending the funeral have only known the deceased over recent years and may not appreciate the earlier parts of their life and the things that they were involved with and their achievements.

In particular, it is always moving to see the reactions of grandchildren or other young relatives in seeing that their grandparent was just as young and vibrant as they themselves are.

The stories told in the eulogy, when combined with the photos shown on the screens, are a powerful way of telling the life story to the gathered family and friends.

At Gippsland Funeral Services we recognised quickly the power of telling a life story through photos. We were one of the first funeral directors to install dual 50" plasma screens in the chapel and purchase projectors and screens for other venues to facilitate these presentations.

On top of this, we use a special program that does a lot more than just display the photo; our software is able to start with a group photo and pan and zoom to bring into focus the

person whose life is being celebrated. This is particularly useful with group photos, such as old school photos or sporting photos, where it can be quite difficult for those attending to work out which one the person is in the group.

Once the funeral is over, the Life Story Presentation DVD is returned to the family in a beautiful personalised cover. Multiple copies for other family members and friends are quickly and easily produced.

It is another way in which Gippsland Funeral Services facilitates the celebration of a life.

Scott Rosseth

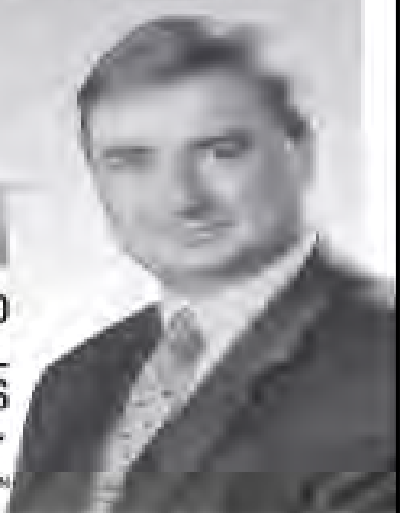
Third Generation Funeral Director

Creating inspirational funerals

www.gippslandfuneralservices.com.au



**GIPPSLAND
FUNERAL
SERVICES**



FOB REAL ESTATE LOCH SPORT



NEW HOUSE & LAND PACKAGES
By Aspired Living



Completed homes ready to move into including plans, permits, colour bond roof, aluminium windows, double glazed windows, solar hot water, kitchen with oven & hotplate, fully painted, ready to move into.

2 bedrooms from \$155,000 both house & land

3 bedrooms from \$179,000 both house & land

LAND FOR SALE from \$45,000

ESTABLISHED HOMES with a large selection of 2 bedroom beach cottages to luxury waterfront homes.

See all our properties on www.foblochsport.com

03 51 460 933

54 LAKE STREET LOCH SPORT



Since our last contact we've lost another wonderful lady in Maree Lorraine Doherty who lost her challenge with life on the 6th of September. Her spirit and character were impeccable

I ensured that I kept in contact with her prior to her major operation in the hospital. I would call her hubby Joe and he would put her on for a quick chat. It was always great talking to her knowing she was in peril and she was always so upbeat, and positive. I admire these qualities in people in such situations.

Every time I would be near her presence, there she was ALWAYS a cheerful smile on her face and it was pleasant to be in her company and to chat with her. And all those around her felt the same warmth. May she now forever rest in peace. It was an absolute pleasure and an honour to have known such a beautiful and caring person.



***Our lives are not determined
by what happens to us,***

***But by how we react
to what happens.***

Not by what life brings to us,

***But by the attitude
we bring to life.***

***A positive attitude
causes a chain reaction
of positive thoughts, events
and outcomes.***

***It is a catalyst,
a spark
that creates extraordinary results.***

Loch Sport R.S.L.

Opening Hours

1:00pm - Sun, Mon, Tues

12:00pm - Wed, Thu, Fri

11:00am - Sat

Bar Facilities & Courtesy Bus

Regular Activities Include

Monday, 7:30pm - Darts

2nd & 4th Tuesday 8:00pm - Karaoke

Wednesday 7:30pm - Carpet Bowls

Thursday 6:00 - 8:00pm - Members Draw

Saturday Bingo Eyes Down 1:00pm

Thursday & Saturday evenings - Raffles

Loch Sport R.S.L. Bistro

Meals - 6:00 - 8:00 pm

Wednesday Thursday, Friday &

Saturday nights

Bookings Preferred but not essential

TEL 5146 0841

I am proud to announce our new Club and Bar Manager. He is a local well respected man and a character for all seasons. We welcome David Patterson or otherwise known to all as "Patto". Patto has vast knowledge in the hospitality industry side of things and we welcome you on board. Come and have an ale or a chat with the man. He'd love to see you there. Thanks for taking up the position mate and putting your hand up.

The year has seen a quiet winter season as nearly all the locals head up North for the warmer weather. Our hours of trading have varied during these particular times and we thank our members and guests for their understanding. We do what we have to do to ensure we are operational and we can cater for our members, guests and the community as a whole.

Our club can accommodate any special celebration of importance from anniversaries, to birthdays. We can set up the facility to your expectations including the food. If it is a surprise party, we can cater for that as well. If the courtesy bus is required, I'm sure we can manage this also. It is a perfect venue for these special times or occasions.

Our positions on the committee are all volunteers and we do what we do for our members and for the entire community. We do everything for the love of the club. We have a duty of care for those who care about our club. We have withstood various challenges that comes with the job on the committee and feel that at times we do for all in general. We welcome anybody to step in our shoes and tackle these challenges. It takes a bit of grit and determination to make things happen and we do make them | happen. Our club is a club. We look after our club with the honour it deserves and the integrity that goes with a Returned Services League. I have been proud to be associated and voted in by you the membership. If you feel you can make a difference and do productive and positive things for the club's future, come on down!! But remember, that it is for the long haul and not just a short time. Together we can achieve excellence and grow. Our R.S.L. is a beautiful venue. I've been all over the country and frequented other R.S.L.'s and I can assure you that there is no other club like ours. It is intimate, small, but capable of catering for what ever we have to, and the best thing about it is a special meeting place to socialize and catch up with each other. In

winter, we have the fire, in summer or sweltering days, we have the air con. What else do you need?? Good friendly service, good beer, good food, music. It's all there. Come and use it and appreciate all that is there to cater for your comfort.

We have heaps of things happening from now until the end of the year. We have the Grand Final and you can watch it on the large TV. Screen or our latest acquisition of a HD LCD 40 inch TV in the bar area. Next we have the dinner dance which is on the 8th of October. Almost all tickets are sold out, so ring Janine Bray or Janine Geraeds for any queries or vacancies. Melbourne Cup is on the 1st of November and will be a fun day. Prizes for best dressed female/male will be awarded. All who attend are guaranteed a great time, so come in and join in the fun.

November 11th is of course a very special day in our history. There will be a service starting at that time. Come and pay your respects for all those who gave their all.

New Years Eve will be celebrated as we always do at the end of the year and to welcome in the year 2012. The band performing will be "The Revolvers".

Finally a thanks to our bar staff who provide a fantastic and friendly service to all who enter our club. Thanks to all who do little things around the place to keep it neat and tidy. Thanks to Carmen Francis for her ability to make things purdy and beautiful to look at with the gardening of the surrounds.

To our volunteer bus drivers in George, Hank, Baz, Yos and the other drivers. We appreciate your sacrifices in looking after us.

To Loch Sport Electrics, Russell Thomas and their crews who come and help us in emergency situations.

To the Women's Auxiliary who go out and sit in front of the Lodge or the Bakery and sell raffle tickets among other things.

And not forgetting my Committee who put so many hours at the club doing what they do best. We wouldn't be where we are today if not for them.

Mustn't forget Marlene Parsons and her team who provide the Link. Great work. On behalf of the community, I thank you all.

Till next time, take care and enjoy life. It only comes around once and you only get one shot at it.



Future of Neighbourhood Watch Under Threat

If Neighbourhood Watch is to continue in Loch Sport it needs your support. With no nominations for area coordinator at the Annual General Meeting, held in September, the group was preparing to go into recess until Inspector Mick McGinn intervened. He called a special meeting to discuss options that would keep NHW operating. As a consequence a new area coordinator has been provisionally appointed and Inspector McGinn is arranging for himself and other police officers to attend the next meeting, scheduled for Wednesday

16th November at 1:30pm at the Loch Sport Community Health Centre (opposite Frankie's Petrol Station). All residents are urged to attend this meeting which will look at ways for the Loch Sport group to move forward.

NHW advises that there are no further plans to hold a Christmas dinner on Christmas Day as there has been little response to date. Any inquiries about Loch Sport NHW should be directed to Senior Constable Peter Locke, while any criminal behaviour should be reported to 000 in the first instance. All police officers now urge the public to use triple-0 without hesitation for any matters requiring a police presence.



LOCH SPORT BOWLING CLUB INC.

**MEDIA RELEASE
Loch Sport Bowls Club**

Tuesday 2 August 2011
Efforts by the Loch Sport Bowls Club to tackle the difficult issue of alcohol management in community sport have resulted in the club receiving a Level 1 accreditation under the Australian Drug Foundation's Good Sports program.

The program has been designed to assist clubs with the responsible management of alcohol through an accreditation process requiring the clubs to implement a variety of practices and policies at each level. It is the first nationwide alcohol accreditation program of its kind.

The program breaks the so-called link between alcohol and club profits and in the process guides clubs to a healthier and safer future by becoming more attractive to a wider range of people in the community. Loch Sport Bowls Club Spokesperson, Bill Klein said today that:

"We offer friendly and safe club facilities which comply with Liquor Licensing's legal requirements. An important part of that was to put our bar servers through a training course in responsible service of alcohol."
"We want people to know the Loch Sport Bowls Club's focus is sport, not drinking. We serve alcohol in a safe responsible manner and it is certainly not our reason for being here. I can assure all members of our community that this is a welcoming and safe place to play, or watch, some great sport without fear of "boozy louts" ruining your day."

The club will be regularly monitored to ensure compliance with the accreditation criteria. Clubs interested in more information or wishing to register for the Good Sports program should contact GippSport on 5135 8335 or go to www.goodsports.com.au

Need a labourer??
then
call Ben
on
0419 815 182
No job too small



Bill Klein

This is your community newsletter

Please send us information regarding your organisation if you are not already advertised.

We also need interesting articles, comments or pictures from you

Please direct your mail to
lsch@netspace.net.au

or

P.O. Box 587 Loch Sport 3851



			5					8
2	5		4				6	
			6			7		
1	6				9			2
4				2				9
9			1				8	3
		9			6			
	8				3		5	6
6					1			

Sudoku



LOCH SPORT LIONS CLUB

Many of our travelling Lions have returned back to the fold and the Loch Sport Lions are ready to launch into the busy activities we run over the next 6 months or so. Despite the absence of half our membership during the winter months we have managed to run raffles, do the wood deliveries as well as the regular maintenance of the Lions barbeques, lucky envelopes and bingo.

One of our Lions is very active selling raffle tickets for meat trays at the Marina Hotel and over the past six weeks has managed to raise \$1000 for Camp Quality. This has been a marvellous effort and we thank the patrons for their generosity and support. Another raffle for meat trays is underway and the proceeds of this raffle will go towards Australian Lions Childhood Cancer Research Foundation for the "First Ever-Neuroblastoma Clinical Trial". We have recently made a donation towards the Australian Lions Drug Awareness Foundation who work tirelessly towards making people aware of the dangers in taking drugs.

Our next big venture is PICK-A-BOX which will kick off at the Marina Hotel at 8.00pm on Saturday 15th October. The last pick-a-box was very

successful and enjoyed by all those who participated. The Calcutta will be held on Cup Eve, Monday 31st October so if you want a chance to "win big" we welcome everyone to join in.

On Sunday 11th December 2001 we will hold our Annual Christmas Party for our local children and on Saturday 7th January 2012 we will again hold our Bush Market with lots of great stalls and a barbecue.

Lions Christmas cakes are now available and can be purchased from various outlets throughout the town or by contacting Gaye McCann on Tel: 5146 0480. Lions Christmas cakes are purchased fresh every year and they have stood the test of time because they are without a doubt an excellent product.

Each year the Loch Sport Lions do regular clean-ups of the roadside and again this will be done before the Christmas Holiday period. If anyone is interested in joining us on this day please watch the notice boards for dates - we would love as many people as possible to come along.

As the saying goes "Many Hands Make Light Work".

Judy Cox
Publicity Officer



Aspired Living
Make it your home

House and Land Packages in Loch Sport

Starting at **\$179,990**
Design your own home on your block of land.
Contact: Brook on 0422 419 454



Pulse Pharmacy Sale
Shop 3 398 - 424 Raymond Street Sale, Victoria 3850
Ph: (03) 5144 7447
Fax: (03) 5144 7329

Providing you with all your Prescription, Medication, Vitamin and Baby ware needs.

Free Delivery Service to Loch Sport

With a friendly Pharmacist always available for your health needs and enquiries.



Sale Medical Imaging smi

4/396 Raymond Street, Sale
(opening available via Sporting Legends Carpent)

* Bulk Billing (all eligible items)

- X-ray
- OPG
- Ultrasound
- Bone Density
- Echocardiography

Ph: 5144 4909 Fax: 5144 4304
www.salemedicalimaging.com.au



LOCH SPORT REGIONAL AMBULANCE VICTORIA

Loch Sport Ambulance Team would like to say Hi. We would like to keep the town informed with what's coming up and also give some handy advice and reminders.

If anyone would like to join our team we are looking for new team members. On the 31st of October we are going to have the shed open from 10:00am and will have equipment and crew there to talk to. Please come along and meet everyone, we would love to see you all.

To all our permanent residents and visitors we want you to know that we have 24 hours day coverage for our town. It's very rare that we don't we have two or more team members always on call. We all love our job and our community and its never a hassle for you to call at any time day or night.

We have a couple of things that need to be said. Firstly from all of us Ambulance Officers we would like to say a BIG THANK YOU to our fantastic auxiliary, we would like to thank all of you, both ladies and men, for your time and efforts. You do a fabulous job. Our town would not have an ambulance if it wasn't for you all so thank you so much!

Our Auxiliary have raised the money for the lights that are now installed on the town oval. Now when we need to call in the Helmed at night for a quick transport the oval will be lit up. The

helicopter medical team can turn them on as they fly into town at night. This will be a wonderful thing for us all in Loch Sport, in the past it use to be difficult getting the helicopter to land at night with just the Ambulance Lights Flashing.

Our Auxiliary has some events coming up:-

Millers Fashion Parade
12:00pm on the 29th Sep
at the Ambulance Shed
light lunch provided

Please come along have a nice afternoon and buy some nice clothes. Help raise money to keep our ambulance operational.

Car Boot Sale
2nd October

The auxiliary will be providing a BBQ. Please come along and buy a sausage, hotdog or hamburger
The cooking starts at 11:30am.

Thank you to the Red Cross Ladies who make the Trauma Teddies. Ladies, they make the biggest difference to the little ones. They feel special that they get a new teddy for being so brave, they really are a wonderful thing Thank you!

Lastly, big thanks to the CFA. Guys your help throughout the year has been FANTASTIC, we appreciate your willingness and man power. It's really helped us out and good to have you all involved.

CHEERS GUYS!!!!!!

Lyn Sayers



There is a continual story circulating around Loch Sport and Golden Beach that the Loch Sport SES is being closed down, this is not true. During the recent floods in the Sale area the Loch Sport SES Boats were deployed to Sale, the boats and all other equipment are now back at the Loch Sport SES LHQ.

The residents of Loch Sport are very quick to pick up on something like this and complain about it, but no-one wants to join the SES.

It is very disheartening as very often we have a resident say – I would like to join the SES – they are invited to come to the Loch Sport SES LHQ on a Tuesday night – which is training night. Nine times out of ten they do not turn up.

There even has been a resident who had no idea as to what the SES is all about and complain at a

community meeting about the SES. It is a pity that this person did not bother to contact the SES to find out what resources and equipment are available and how the equipment is used.

Loch Sport residents, have a think and consider joining the Loch Sport SES and help your local community.

If any residents would like to come and see what the SES does and what different equipment is used the Loch Sport SES LHQ is open most Sunday's between 11.00am and 1.00pm.

Training is each Tuesday night at 7.00pm, anyone who is interested in joining is very welcome to come along.

Gordon – Controller – 0428 888 312 – 5146 0813

Helen – Deputy Controller – 0448 323 100



LOCH SPORT FISH & CHIPS

9 Cliff St - Ph 5146 0606

Take Away Order

Open: 11:00am - 8:30pm Mon - Sun

All Public Holidays 11am-9pm

Closed Wednesdays

Flake (fried or grilled)	\$5.50
Snapper Fillet (fried or grilled)	\$6.50
Whiting (fried)	\$5.50
Flat Head Tails (fried)	\$2.50
Barramundi (fried or grilled)	\$6.90
Chips (minimum serve)	\$3.00
Potato Cakes (home made)	\$1.00
Dim Sims (fried or steamed)	\$1.00
S.M. Dim Sim (fried or steamed)	\$2.00
Home made Spring Rolls	\$1.70
Real Calamari Rings	\$1.00
Seafood Sticks	\$1.50
Prawn Cutlet	\$1.50
Fried Battered Onion Rings	\$0.50
Scallop	\$1.50
Grilled Whole Garlic Prawns on Bed of Lettuce (12)	\$9.50
Grilled Shelled Garlic Prawns with Fetta	\$9.50
Grilled Scallops with Fettuccine, Pecorino Cheese & Basil Sauce	\$9.50
Home Made Real Beef Burgers (the lot)	\$6.80
Home Made Holiday Tower Burger	\$8.50
Porterhouse Steak Roll	\$8.50
Egg & Bacon Roll	\$4.60
Souvlaki (lamb or chicken)	\$8.50
Fried Hot Dog in Batter	\$2.50
Fried Chicken Devil Wings	\$1.80
Large Fried Chicken	\$1.80
Garlic Balls	
Chip Filled Roll (sae/chicken salt)	\$2.50
Pineapple or Apple Fritter	\$1.00
Banana Fritter	\$1.50
Fried Mars Bar, Chunky Kit Kat or Snickers)	\$3.50
500ml Premium Ice Cream	\$5.00
Tartar/Tomato Sauce	\$ 50c



L. S. COMMUNITY REPRESENTATIVE GROUP

Your CRG is continuing to pursue the interests of the community, especially in regards to the Community Plan which was formed after wide community consultation. The CRG MEETS ON THE 1st TUESDAY of each month at 10:00am in the Public Hall.

All are welcome to come along and as the various clubs and groups report on their activities it is a good way to learn about the town. We are pleased at the growing membership. You can also find us on the net at

www.lochsport.org.au click on to CRG.

There you will find membership application forms, Community and other plans etc.

Support this committee by becoming a member.

Your correspondence can be forwarded to lscrg@lochsport.org.au or Loch Sport CRG at PO Box 129 Loch Sport 3851

Any individual problem you have in the town you can go to the Wellington Website and submit a Customer Action

LOCH SPORT TENNIS CLUB

At the moment the tennis club it is

going along with its small band of players meeting on Sunday mornings from 9-00am to 12-00noon.

As always everyone welcome and we have one or two new faces coming along at the moment which is good to see. We have had one or two of our regulars still away.

Other than that as always everyone is made welcome of a Sunday for a hit and giggle etc.

The tennis club would like to express their deepest sympathy to Joe Doherty & family for the passing of Marree who was a life member of the tennis club.

Robin Hampson



**GRANT
The Silicon Man**

ABN 61 177 477 822

0428 356 957

Architectural Corking
Broken Window Replacement
Pensioner Discount

**Loch Sport
Holiday Rentals**

Loch Sport Holiday Rentals is the leading holiday rental provider in the Loch Sport area

The sole role of Loch Sport Holiday Rentals is to provide holiday rental properties in the Loch Sport area which allows us to provide the best service possible

Contact: Leanne Hartwig
E-Mail: lshr@netspace.net.au
Phone: 03 5146 0914
Fax: 03 5146 0914
Mobile: 0407 699 305



Receive \$500 for Education Costs

Do you have a child at school or about to start, you may be eligible to earn \$500 to assist with education costs.

Berry Street still has places available in the 2010 Saver Plus Program which runs for 10 months.

IF YOU OR YOUR PARTNER?

Have a child attending primary or secondary school?

Have a health care card or pension card?

Have some form of paid employment?

YOU may be eligible to receive \$1 for every \$1 you save up to a maximum of \$500

(Funds can be used for educational expenses such as; camps, books, uniforms, musical instruments, computers, compulsory fees, tuition etc.)

To find out more about this exciting program contact; **Clare Adams on 5144 9339 or 0408 132 044**

cadams@berrystreet.org.au





GOLDEN BEACH LIFE SAVING CLUB

Challenging

Surf Life Saving Opportunity

If you are looking for a challenge, consider joining the Golden Beach Surf Life Saving Club this summer.

By doing so become part of the volunteer surf patrol on the Ninety Mile Beach.

Active members are wanted to train as Surf Lifesavers or to be involved in the Nippers Program for the 2011-2012 season.

You can obtain the qualifications of Bronze Medallion or Surf Rescue Certificate or be part of the Nipper Program. Non swimmers are also welcome to become a member of the Surf Life Saving Club.

If you are interested please contact: Sue Parratt, Secretary, Phone: 5146 3119, or email: surf-club@goldenbeachgippsland.com.au



AUSTRALIAN RED CROSS LOCH SPORT UNIT

Loch Sport Unit is a service group of volunteers. We have fund raising in our town with much fun and support and are looking forward to Cup Weekend.

New members are welcome.

Trauma Teddy's are very important for our knitters and finishers and distribution is in demand all the time. We meet every three months and our next meeting is at Hilary's at 11.00am. Regards *Hilary*

Exclusively Yours

Civil Marriage Celebrant
Mrs. Beverly Lynn

Ph: 03 51444440 Mob: 0412153424
Email: lynnbeverly04@yahoo.com.au

**FENCING
CONTRACTOR**

Ring Peter
51460060

All types of fencing



LOCH SPORT BOAT CLUB

A new event on the calendar is "The Catamaran Challenge" sponsored by Pulse Credit Union, to be conducted on Saturday 29th Oct 2011 (Melbourne Cup weekend). It is to be a 20/ 30 km event for off the beach catamarans. So cat sailors, dust off your cats and be in it. Prizes to be presented at a BBQ following.

The popular "**Get Into Small Boat Sailing**" courses conducted by the LSBC commence early January 2012, enquires ring 5146 0938.

New members are very welcome at the club, come and meet us Saturday evenings 5 – 8pm Call in and say hello, Bar prices are very reasonable.

WEATHER CAM = WEATHER STATION

Loch Sport has a weather station, to check weather details go to www.loch-sport.net select weather-cam.

Images over the foreshore Charles Street to Hotel and temperature, wind speed, rainfall etc updated every 5 minutes.

Please support the advertisers who will help cover the costs of running this website.

This Weather Cam has been a popular addition to the club, at this stage there has been over 30,000 hits since July last year.

Advertising on the weather cam, your business can have a banner on the website for \$240 per year, we can set it up for you, contact Kaye 0408 556 993

Vale: It is sad that we report the passing of past member John Lavin, John and Peggy were very friendly and helpful around the club for many years. John sailed his Farr 6000 Jopeg in many yacht races, many times on his own much to the worry of the committee. Our condolences to Peggy and those who claimed John as a friend.

THE POKER RUN ON THE GIPPSLAND LAKES – Saturday January 21 2012

This is a great day out with a chance to win \$1000 for the best poker hand picked up. Meals for 2 people on board your own boat and a poker hand \$130, extra hands can be purchased by skippers and extra people on board \$50 children 15-18 \$20 each; children under 12 free. Registrations help with the planning of this event. Entries are needed early as late entries will not be accepted on the day from any team who have not preregistered their boat information. Come along and enjoy the fun.

Contact Kaye Hogben 51460377 or register on line www.loch-sport.net and choose poker run.



Marina Beach Accommodation

Modern Chalet Style Cabins
4 Available Sleep 6
1 min from beach, Marina & Hotel
Linen included
Fully self-contained

From \$65.00 Off Peak
(3 nights or more)
\$104.00 Holiday Period
PH: Loch Sport Marina
5146 0243

~ We say Farewell ~



Marie Doherty
19/09/1944 - 06/09/2011
To our friend Marie

Thank you for your love of life, your laughter and sense of humour, especially when life became difficult at times.

Your knitting and the lovely scarves you made, how your ball of wool would escape onto the floor at our R.S.L. Darts Club. The added stitches and dropped stitches, your Joe could fix all of these, along with other friends assisting when needed.

Your love of liquorice "all sorts" at darts, you continued with your knitting while enjoying eating these. The lovely coloured wools you chose to knit with.

Indoor bowls at our Loch Sport R.S.L. You and your Joe enjoyed this time together. Olwyn, Duncan, Colin and Ann shared this special time with you, along with other people who would join in.

Your input at Track 10 Caravan and Holiday Park. It was you who

Suggested to build the shop at its present site. You also gave Jan Fowler other valuable ideas about setting up this park.

You have been a blessing and inspiration to all of us who have had the opportunity to share your love of life with you.

At peace dear friend and thank-you.
Ann Wood



Model—Sharp TV
with digital box
Excellent working order
Great buy—possibly for holiday house

Ph Joan 5146 0625
\$50 and its yours



- \$40 2 Fiamma Wheel Ramps
 - \$40 1 Golf Bag with Wheels
 - \$35 1 Golf Folding
 - 3 wheel trolley
 - \$225 1 ROK Small
 - Electric Cement Mixer
 - \$40 1X150mm
 - Manual Post Hole Digger
 - \$30 1 Clothes Rack
 - with 4 Shelves (solid)
- Ph 5146 0408
185 National Park Road



~~ John Lavin ~~

~ What's Happening ~

COME AND ENJOY A NIGHT WITH THE **GIRLS** AND CONTINUE LOCH SPORTS TRADITION OF PROUDLY SUPPORTING OUR ANNUAL **GIRLS NIGHT IN**.

GAMES, DANCING AND AN AUCTION

PH HELEN NIKITIN 03 5146 0035 0427 359 148

LOCH SPORT BOAT CLUB

22ND OCTOBER 7:00PM

BYO PLATE TO SHARE /OR AUCTION ITEM

GIRLS NIGHT IN



Learn how to **start** and **grow** your business

SMALL BUSINESS VICTORIA



energise enterprise
VICTORIA'S SMALL BUSINESS FESTIVAL

Small Business Victoria presents Energise Enterprise - Victoria's annual Small Business Festival. 1-31 August 2010.

OVER 350 EVENTS held across Victoria including workshops, expos, seminars and networking sessions.

- > Discover opportunities and be inspired to improve your small business skills.
- > Find out how to prepare your small business for the recovery.
- > **WIN 1 of 3 iPads!** - Enter the draw by registering online.

Order your FREE 48 page Event Guide or access event bookings at www.business.vic.gov.au/energise or call **13 22 15**

Sponsored by



DEPARTMENT OF INNOVATION, INDUSTRY AND REGIONAL DEVELOPMENT



Wellington Shire Council Draft Healthy Lifestyles Strategy

Background

The Healthy Lifestyles Strategy aims to increase participation and accessibility to healthy lifestyle opportunities within the Wellington Shire. To achieve this, the Shire will work in partnership with government, private sector agencies and our community.

Aspects of an individual's healthy lifestyle that this strategy will focus on include physical activity (passive and active recreation) and healthy eating.

Vision for Healthy Lifestyles

In 2011 Wellington Shire Council developed the Council Plan 2011-15 (the Council Plan). The Council Plan aligns with the Wellington 2030 Vision and included in the Plan is a clear vision for Healthy Lifestyles.

"The people of Wellington enjoy active lifestyles and are empowered to take the steps, actions and strategies that enable them to achieve optimal health and wellbeing."

Wellington Shire Council will work through this outcome by:

- Providing support and assistance in partnership with government, private sector agencies and our community to increase participation and accessibility to healthy lifestyle opportunities within our municipality.
- We will provide a range of active and passive recreational opportunities that make healthy lifestyle choices easy for our community. We will take a leadership role by participating in healthy lifestyles.

Further Information and Feedback

Hard copies of the Draft Healthy Lifestyles Strategy are available from Wellington Shire Council customer Service centre, Libraries, Aqua Energy, Gippsland Regional Sports complex and at the Wellington Shire Council website www.wellington.vic.gov.au

Submissions on the Healthy Lifestyles Strategic Plan will be considered via written or email formats only.

Submissions can be posted to:

Manager Healthy Lifestyles
Wellington Shire Council
PO BOX 506 3850

Submissions by email:

Manager Healthy Lifestyles at
enquires@wellington.vic.gov.au

Submissions need to be received prior to 5.00pm Friday 14 October.

MONDAY	10:00am	Community Health Centre	Tai Chi	
	10:00am	Public Hall	Model Boat Building	
	1:15pm	Bowling Club	Carpet Bowls	Names in by 12:15pm
	1:30pm	Public Hall	Exercise Class	
	7:30pm	RSL	Darts	
1st MONDAY	1:00pm	Mini Golf	CHC Support Group	
	6:00pm	Various Venues	Book Club	
2nd MONDAY	10:00am	Public Hall	Community House General Meeting	
3rd MONDAY	10:30am	Public Hall	Loch Sport Senior Citizens	
	2:00pm	RSL	Womens Auxiliary Meeting	
TUESDAY	9:30am	Public Hall	Craft Group	
	10:30am-1:00pm	Lake Street	Mobile Library	
	2:00pm-4.30pm	Lake Street	Mobile Library	
	12:00noon	Public Hall	Ancestry Group	
1st TUESDAY	10:00am	Public Hall	Community Representative Group	
	10:00am	Community Church	Catholic Mass	
2nd TUESDAY	10:00am	Ambulance Station	Ambulance Victoria	February-December
	7:30pm	Public Hall	Lions Club	
	7:30pm	RSL	Karaoke	
2nd TUESDAY BI-MONTHLY	1:00pm-2:00pm	Community Health Centre	Health Centre Representative Group	
4th TUESDAY	7:00pm	Public Hall	Lions Club	
WEDNESDAY	9:00am	Sale Pool	Wednesday Swimming	
	9:30am	Golf Club	Players with ALGU/AGU handicaps	Bar service available
	12:30pm	Bowling Club	Lawn Bowls	Names by 12:15pm
	1:00pm	Public Hall	Lions Bingo	
	3:00pm	Public Hall	After School Program	
	7:00pm	Public Hall	Quilting Group	
	7:00pm	Public Hall	Easy Ballroom	
1st & 3rd WEDNESDAY	10:00am	Bowling Club	Jackpot Bowls	Book by 9.30am
2nd WEDNESDAY	1:30pm	Community Health Centre	Neighbourhood Watch	
1st,2nd&3rd WEDNESDAY	7:30pm	RSL	Carpet Bowls	
THURSDAY	9:00am-noon	Tennis Club	Tennis Club	
	10:30am-1:00pm	Lake Street	Mobile Library	
	2:00pm-4.30pm	Lake Street	Mobile Library	
	6:00pm	RSL	Happy Hour	Draw & Raffles
	6:00pm-8:00pm	RSL	Meals	
FRIDAY	9.30am	Mini Golf	Walking Group	
	12:00noon	Public Hall	Art Group	
	6:00pm-8:00pm	RSL	Meals	
SATURDAY	9:00am	Sale Pool	Saturday Swimming	
	9:30am	Golf Club	Players with ALGU/AGU handicaps	Bar service available
	1:00pm	RSL	Bingo	
	1:30pm	Bowling Club	Social Bowls	
	4:00pm-8:00pm	Bowling Club	Barefoot Bowls	
	6:00pm-8:00pm	RSL	Meals	
SATURDAY MONTHly	8:00pm	Public Hall	Social Dance	
SUNDAY	9:00am-1:00pm	CFA Station	Garage Sale	5146 0967
	9:30am-1:00pm	Tennis Club	Relaxed Social Tennis	
	12:30pm	Bowling Club	Bowling Club	Names by 12:15pm
	10.00am	Public Hall	Assembly of God	
2nd & 4th SUNDAY	10:30am	Community Church	St Marks Anglican & Comm Church	

**ARIES ~ Mar 21- Apr 20**Colour: Pink Day: Tuesday
Numbers: 2,3,2,3 Lotto: 2,13,26,36,30,22.

For many a choice of two very delectable partners is indicated. One is an old reliable friend; the other is a very sexy newcomer. Money matters should be dealt with swiftly, otherwise problems will arise. It could be very difficult to keep peace on the domestic scene try harder with loved ones. You will find that it pays to be careful with details, however, minor it may seem. Keep all your affairs in perspective and be careful not to exaggerate any minor events. Pursuit of pleasure may seem all-important and this attitude could get out of hand at times.

**TAURUS ~ Apr 21- May 20**Colour: Green Day: Monday
Racing: 2,6,3,5 Lotto: 2,15,14,45,5,22

Someone who has taken you for granted may be surprised. A sexy stranger is showing a great deal of interest in you, and not exactly interested in your mind. A work promotion may keep you busy, enjoy all this extra attention. Singles may form romantic links, some could come close to gaining their wishes or dreams. Don't rely too heavily on your own judgement in career decision making, get advice from experts. Take things as they come, planning may be a waste of energy. Could be a successful period career wise, effort you made in the past could now pay off.

**GEMINI ~ May 21 - June 21**Colour: Cream Day: Friday
Racing: 2,6,5,4 Lotto: 1,12,15,26,36,44

Many will meet someone special while on holiday. This could turn into something quite memorable. Some difficulty at work will sort itself out so do not worry unnecessarily. Do not volunteer any advice unless asked to do so your ideas might not go down well. Could be some unpredictable patches just going along quietly and do not let anything worry you, some good luck ahead.

**CANCER ~ Jun 22 - Jul 22**Colour: Fawn Day: Friday
Racing: 2,3,6,5 Lotto: 1,12,26,36,30,44

You could be in for a fair bit of luck with property matters. Also you could come across a real bargain in a second hand shop. Watch out for sales people trying to get the better of you. Someone from the past could resurface. Best to meet your loved one half ways and there should be only little things to worry about. Financial ventures need extra care and do not be in a hurry to part with your money.

**LEO ~ Jul 23 - Aug 22**Colour: Silver Day: Wednesday
Racing: 2,6,3,2 Lotto: 1,12,26,36,40

Something you have wanted for a long time could become yours. Your domestic scene will be very hectic. A new contact could turn into a wonderful new romance. The need to be making money or conserving what you have should be very important. Self-deception could interfere in any decision making so try to deal in facts only. Many will be making a long time relationship into a permanent arrangement. If you are feeling unsettled or disappointed over something stay cool calm and collected, something better will come along.

**VIRGO ~ Aug 23 - Sep 23**Colour: Orange Day: Thursday
Racing: 2,3,6,3 Lotto: 2,13,9,8,12,20

Be very careful in a new relationship, or a great disappointment could be yours. You will show people how resourceful you can be when the need is there. An excellent period for affairs of the heart and social activities. As long as your expectations are not too great development during this period are good and a good time to catch up with things. A period in which you should be tackling the things that have been waiting your attention. Keep your priorities in order as mistakes can occur if instructions are not clarified for some new career opportunities.

**LIBRA ~ Sep 24 - Oct 23**Colour: Blue Day: Friday
Racing: 5,6,2,1. Lotto: 5,16,29,8,41,44

There could be marriage plans in the air but this could create problems with loved ones. You could be part of a big event that is requiring a lot of work on your part. A good time to catch up with unfinished business. Not wise to upset any existing household arrangements. The unpredictable could surprise and will be lucky for most. Many could relocate to far away places. This period may not be loaded with excitement but it could be right for checking and balancing your budget. Something unpredictable could shatter your confidence but stay flexible and you will cope easily.

**SCORPIO ~ Oct 24- Nov 2**Colour: Mauve Day: Wednesday
Racing: 2,3,6,5 Lotto: 5,3,15,26,36,39

Surprise visitors or you may be required to attend a function with some romantic interludes is indicated. You could be thinking of some long distance travel, or a loved one is on his way to you. It could be very difficult to keep peace on the domestic scene try harder with loved ones. You will find that it pays to be careful with details, however, minor it may seem. Keep all your affairs in perspective and be careful not to exaggerate any minor events. Pursuit of pleasure may seem all-important and this attitude could get out of hand at times

**SAGITTARIUS ~ Nov 23 - Dec 20**Colour: Green Day: Friday
Racing: 1,6,8,4 Lotto: 1,15,26,29,34,37

A busy and mostly happy period coming up and you should be able to make some new and exciting friends. Love life is also very successful and more is indicated in career promotions. The unattached could form romantic links during this period and some could come close to gaining their wishes or dreams. Do not rely too heavily on your own judgement in career decision making, get advice from the experts. Take things as they come elaborate planning may be a waste of energy. Could be a successful period career wise and effort you made in the past could now pay off.

**CAPRICORN ~ Dec 21 - Jan 19**Colour: Cream Day: Monday
Racing: 5,6,4,2 Lotto: .12.15.26.36.37.

Lucky period for career and finances, you are needed to sort problems. Do the right things and you will be better off and more successful in romance. The unattached could form romantic links during this period and some could come close to gaining their wishes or dreams. Do not rely too heavily on your own judgement in career decision making, get advice from the experts. Take things as they come elaborate planning may be a waste of energy. Could be a successful period career wise and effort you made in the past could now pay off.

**AQUARIUS ~ Jan 20 - Feb 19**Colour: Silver Day: Tuesday
Racing: 2,3,6,9 Lotto: 2,15,24,40,22,29

There could be someone in your life that has some plans for you and your future. This could become evident very soon. Keep your purse strings very tight, as funds will be needed soon. Do not volunteer any advice unless asked to do so your ideas might not go down well. Could be some unpredictable patches just going along quietly and do not let anything worry you, some good luck ahead. Best to meet your loved one half ways and there should be only little things to worry about. Financial ventures need extra care and do not be in a hurry to part with your money.

**PISCES ~ Feb 20- Mar 20**Colour: Blue Day: Saturday
Racing: 5,6,8,7 Lotto: 5,14,41,19,8,33

It is a good time for improvements in your life and the results should be staggering and bring out the real you. Not a good time to lend or borrow money, as aspects is a little confusing. Do not volunteer any advice unless asked to do so your ideas might not go down well. Could be some unpredictable patches just going along quietly and do not let anything worry you, some good luck ahead. Best to meet your loved one half ways and there should be only little things to worry about. Financial ventures need extra care and do not be in a hurry to part with your money.

Sat 1	5:08am 0.4	Sun 9	1:55am 0.4	Mon 17	12:47am 1.2	Tue 25	1:45am 0.3
	11:33am 1.8		8:09am 1.4		6:12am 0.7		8:06am 1.7
	6:17pm 0.2		2:06pm 0.6		12:40pm 1.6		2:20pm 0.3
Sun 2*	12:20am 1.3		8:11pm 1.5		7:32pm 0.5		8:25pm 1.6
	6:58am 0.5	Mon 10	2:28am 0.4	Tue 18	1:35am 1.2	Wed 26	2:30am 0.3
	1:26pm 1.7		8:43am 1.5		6:55am 0.7		8:53am 1.8
	8:23pm 0.3		2:48pm 0.5		1:25pm 1.5		3:17pm 0.2
Mon 3	2:25am 1.2		8:51pm 1.5		8:25pm 0.5		9:20pm 1.6
	7:54am 0.6	Tue 11	2:58am 0.4	Wed 19	2:30am 1.1	Thu 27	3:16am 0.3
	2:25pm 1.7		9:16am 1.5		7:48am 0.7		9:40am 1.9
	9:31pm 0.4		3:26pm 0.5		2:17pm 1.5		4:13pm 0.1
Tue 4	3:37am 1.2		9:28pm 1.4		9:24pm 0.5		10:17pm 1.5
	8:57am 0.7	Wed 12	3:27am 0.5	Thu 20	3:34am 1.1	Fri 28	4:03am 0.3
	3:30pm 1.6		9:47am 1.6		8:52am 0.8		10:28am 1.9
	10:40pm 0.4		4:04pm 0.4		3:18pm 1.5		5:10pm 0.1
Wed 5	4:51am 1.2		10:06pm 1.4		10:25pm 0.5		11:13pm 1.5
	10:07am 0.7	Thu 13	3:57am 0.5	Fri 21	4:41am 1.2	Sat 29	4:52am 0.4
	4:40pm 1.5		10:19am 1.6		10:03am 0.7		11:18am 1.9
	11:42pm 0.4		4:42pm 0.4		4:25pm 1.5		6:07pm 0.1
Thu 6	5:55am 1.2		10:43pm 1.4		11:21pm 0.4	Sun 30	12:11am 1.4
	11:19am 0.7	Fri 14	4:27am 0.5	Sat 22	5:41am 1.3		5:42am 0.5
	5:45pm 1.5		10:51am 1.6		11:15am 0.7		12:10pm 1.9
Fri 7	12:36am 0.4		5:21pm 0.4		5:32pm 1.5		7:05pm 0.2
	6:47am 1.3		11:23pm 1.3	Sun 23	12:12am 0.4	Mon 31	1:10am 1.3
	12:24pm 0.7	Sat 15	4:59am 0.6		6:32am 1.4		6:36am 0.6
	6:40pm 1.5		11:25am 1.6		12:22pm 0.6		1:02pm 1.8
Sat 8	1:19am 0.4		6:01pm 0.4		6:32pm 1.6		8:04pm 0.3
	7:31am 1.3	Sun 16	12:03am 1.3	Mon 24	1:00am 0.3		
	1:19pm 0.6		5:34am 0.6		7:20am 1.5		
	7:29pm 1.5		12:01pm 1.6		1:23pm 0.4		
			6:44pm 0.5		7:29pm 1.6		

Moon Phases - 1st Qtr - 4th Full - 12th 3rd Qtr - 20th New - 27th

* Daylight Saving Time Begins

Tide Chart courtesy of Helen McFarlane



**WELLINGTON COMMUNITY
NO INTEREST LOANS SCHEME
(NILS)
provides no interest loans for
low income consumers**

This scheme has been set up to assist people with the purchase or replacement of household appliances such as refrigerators & washing machines and also educational or medical special needs items. Small loans for any other worthwhile purpose will be considered.

Interviews are available in Sale, Maffra and Yarram.

To apply please contact:

- Uniting Care Gippsland - 51447777
- CAVA - 51438889
- St Vincent de Paul - 51444183
- Yarram & District Health Service - 51820222

7	2	8	1	5	9	3	4	6
9	5	6	3	4	2	1	8	7
4	3	1	9	7	8	6	2	5
3	8	5	4	9	1	2	7	6
6	1	9	5	2	7	8	3	4
2	7	4	9	8	3	5	9	1
5	6	7	2	3	9	4	1	8
1	9	3	8	9	4	7	5	2
8	4	2	7	1	5	9	6	3

Sudoku Answer

Tue 1	2:12am	1.2	Wed 9	2:11am	0.5	Thu 17	2:11am	1.2	Fri 25	2:46am	0.4
	7:33am	0.7		8:41am	1.6		7:29am	0.7		9:19am	1.9
	1:57pm	1.7		3:11pm	0.5		1:48pm	1.6		4:07pm	0.1
	9:04pm	0.3		9:04pm	1.3		8:50pm	0.4		10:07pm	1.4
Wed 2	3:16am	1.2	Thu 10	2:44am	0.5	Fri 18	3:09am	1.2	Sat 26	3:37am	0.4
	8:34am	0.7		9:14am	1.7		8:30am	0.7		10:09am	2.0
	2:56pm	1.6		3:49pm	0.4		2:44pm	1.5		5:01pm	0.1
	10:02pm	0.4		9:45pm	1.3		9:43pm	0.4		11:03pm	1.4
Thu 3	4:20am	1.2	Fri 11	3:18am	0.6	Sat 19	4:08am	1.3	Sun 27	4:29am	0.5
	9:40am	0.7		9:47am	1.7		9:40am	0.7		10:59am	2.0
	3:59pm	1.5		4:26pm	0.4		3:49pm	1.5		5:54pm	0.1
	10:56pm	0.4		10:25pm	1.3		10:37pm	0.4		11:58pm	1.3
Fri 4	5:18am	1.3	Sat 12	3:52am	0.6	Sun 20	5:05am	1.4	Mon 28	5:22am	0.5
	10:52am	0.7		10:22am	1.7		10:54am	0.6		11:49am	1.9
	5:03pm	1.4		5:05pm	0.4		4:57pm	1.5		6:45pm	0.2
	11:44pm	0.5		11:06pm	1.3		11:28pm	0.4	Tue 29	12:53am	1.3
Sat 5	6:09am	1.3	Sun 13	4:28am	0.6	Mon 21	5:57am	1.5		6:15am	0.6
	11:59am	0.7		10:57am	1.7		12:05pm	0.5		12:39pm	1.8
	6:01pm	1.4		5:44pm	0.4		6:05pm	1.4		7:37pm	0.2
Sun 6	12:26am	0.5		11:48pm	1.2	Tue 22	12:19am	0.3	Wed 30	1:47am	1.3
	6:53am	1.4	Mon 14	5:07am	0.6		6:49am	1.6		7:09am	0.7
	12:58pm	0.6		11:35am	1.7		1:11pm	0.4		1:27pm	1.7
	6:53pm	1.3		6:25pm	0.4		7:09pm	1.4		8:26pm	0.3
Mon 7	1:03am	0.5	Tue 15	12:32am	1.2	Wed 23	1:08am	0.3	Thu 1	2:41am	1.3
	7:31am	1.5		5:49am	0.7		7:39am	1.8		8:04am	0.7
	1:49pm	0.6		12:15pm	1.7		2:13pm	0.3		2:16pm	1.5
	7:40pm	1.3		7:10pm	0.4		8:10pm	1.4		9:13pm	0.4
Tue 8	1:38am	0.5	Wed 16	1:20am	1.2	Thu 24	1:57am	0.4	Fri 2	3:35am	1.3
	8:07am	1.5		6:36am	0.7		8:28am	1.9		9:04am	0.7
	2:32pm	0.5		12:59pm	1.6		3:11pm	0.2		3:09pm	1.4
	8:23pm	1.3		7:58pm	0.4		9:09pm	1.4		9:59pm	0.5

Moon Phases - 1st Qtr - 3rd Full - 11th 3rd Qtr - 19th New - 25th



This newsletter is supported by Wellington Shire Council

GARY POWERS
REAL ESTATE PTY. LTD
 56 Lake Street, Loch Sport. 3851
 Loch Sport & Ninety Mile Beach

- ◆ House blocks from \$50,000
- ◆ Holiday Homes from \$129,00

Being the longest established Real Estate Agency in Loch Sport we have put together a substantial list of holiday homes. We cater for families up to 11 people or a romantic weekend for two.

All properties can be viewed and booked at www.garypowersrealestate.com

Make your next holiday special

Ph: (03) 5146 0411 Mobile: 0428 514 088